



# PDF Writer for Windows 10

© 2015 Wondersoft

**Note:**

To change the product logo for your own print manual or PDF, click "Tools > Manual Designer" and modify the print manual template.

# Title page 1

**Use this page to introduce the product**

---

*by Wondersoft*

*This is "Title Page 1" - you may use this page to introduce your product, show title, author, copyright, company logos, etc.*

*This page intentionally starts on an odd page, so that it is on the right half of an open book from the readers point of view. This is the reason why the previous page was blank (the previous page is the back side of the cover)*

# PDF Writer for Windows 10

© 2015 Wondersoft

All rights reserved. No parts of this work may be reproduced in any form or by any means - graphic, electronic, or mechanical, including photocopying, recording, taping, or information storage and retrieval systems - without the written permission of the publisher.

Products that are referred to in this document may be either trademarks and/or registered trademarks of the respective owners. The publisher and the author make no claim to these trademarks.

While every precaution has been taken in the preparation of this document, the publisher and the author assume no responsibility for errors or omissions, or for damages resulting from the use of information contained in this document or from the use of programs and source code that may accompany it. In no event shall the publisher and the author be liable for any loss of profit or any other commercial damage caused or alleged to have been caused directly or indirectly by this document.

Printed: April 2015 in (whereever you are located)

## **Publisher**

...enter name...

## **Managing Editor**

...enter name...

## **Technical Editors**

...enter name...

...enter name...

## **Cover Designer**

...enter name...

## **Team Coordinator**

...enter name...

## **Production**

...enter name...

## **Special thanks to:**

*All the people who contributed to this document, to mum and dad and grandpa, to my sisters and brothers and mothers in law, to our secretary Kathrin, to the graphic artist who created this great product logo on the cover page (sorry, don't remember your name at the moment but you did a great work), to the pizza service down the street (your daily Capricciosas saved our lives), to the copy shop where this document will be duplicated, and and and...*

*Last not least, we want to thank EC Software who wrote this great help tool called HELP & MANUAL which printed this document.*

# Table of Contents

Foreword	6
<b>Part I Overview</b>	<b>8</b>
<b>Part II PDF Writer for Windows 10</b>	<b>12</b>
<b>Part III PDF Writer for Windows Server 2016</b>	<b>14</b>
<b>Part IV Product Comparison</b>	<b>16</b>
<b>Part V Features</b>	<b>18</b>
<b>Part VI Hard Facts</b>	<b>20</b>
<b>Part VII System Requirement</b>	<b>22</b>
<b>Part VIII Creating PDF files</b>	<b>25</b>
<b>Part IX PDF General Settings</b>	<b>29</b>
<b>Part X PDF Font Embedding</b>	<b>32</b>
<b>Part XI Document Properties</b>	<b>35</b>
<b>Part XII PDF Overwrite Options</b>	<b>38</b>
<b>Part XIII PDF Versions</b>	<b>41</b>
<b>Part XIV PDF Document Security</b>	<b>43</b>
<b>Part XV Automatic Output</b>	<b>46</b>
<b>Part XVI Output Privilege Issues</b>	<b>49</b>
<b>Part XVII Image Compression</b>	<b>51</b>
<b>Part XVIII PDF Color Management</b>	<b>55</b>
<b>Part XIX Remove Watermark</b>	<b>58</b>
<b>Part XX Total PDF Solutions</b>	<b>60</b>
<b>Part XXI Getting Support</b>	<b>63</b>

<b>Part XXII Frequently Asked Questions</b>	<b>65</b>
<b>Part XXIII Purchase &amp; Order</b>	<b>69</b>
1 Online Purchase.....	70
2 Purchase Order.....	70
3 Other Ways of Order.....	70
<b>Part XXIV Client Setup Utilities</b>	<b>73</b>
<b>Part XXV About Us</b>	<b>75</b>
<b>Index</b>	<b>76</b>

# Foreword

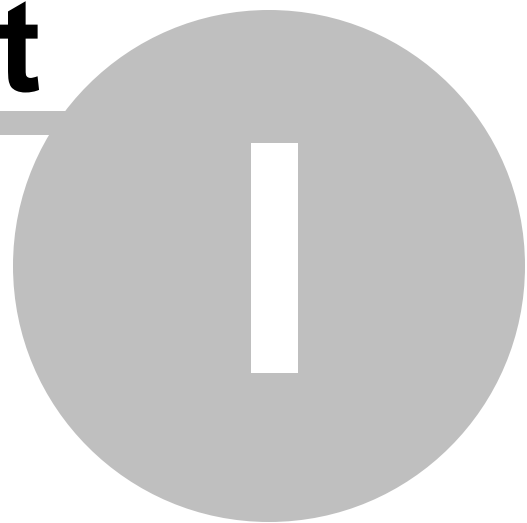
This is just another title page  
placed between table of contents  
and topics

# Top Level Intro

This page is printed before a new  
top-level chapter starts

# Part

---



# 1 Overview

## Overview



Windows 10 PDF Series software includes [PDF Writer for Windows 10](#) and [PDF Writer for Windows Server 2016](#), presenting a wide range of new powerful solutions not only targeted at large corporate businesses but also available to anyone worldwide, for a truly unique budget price.

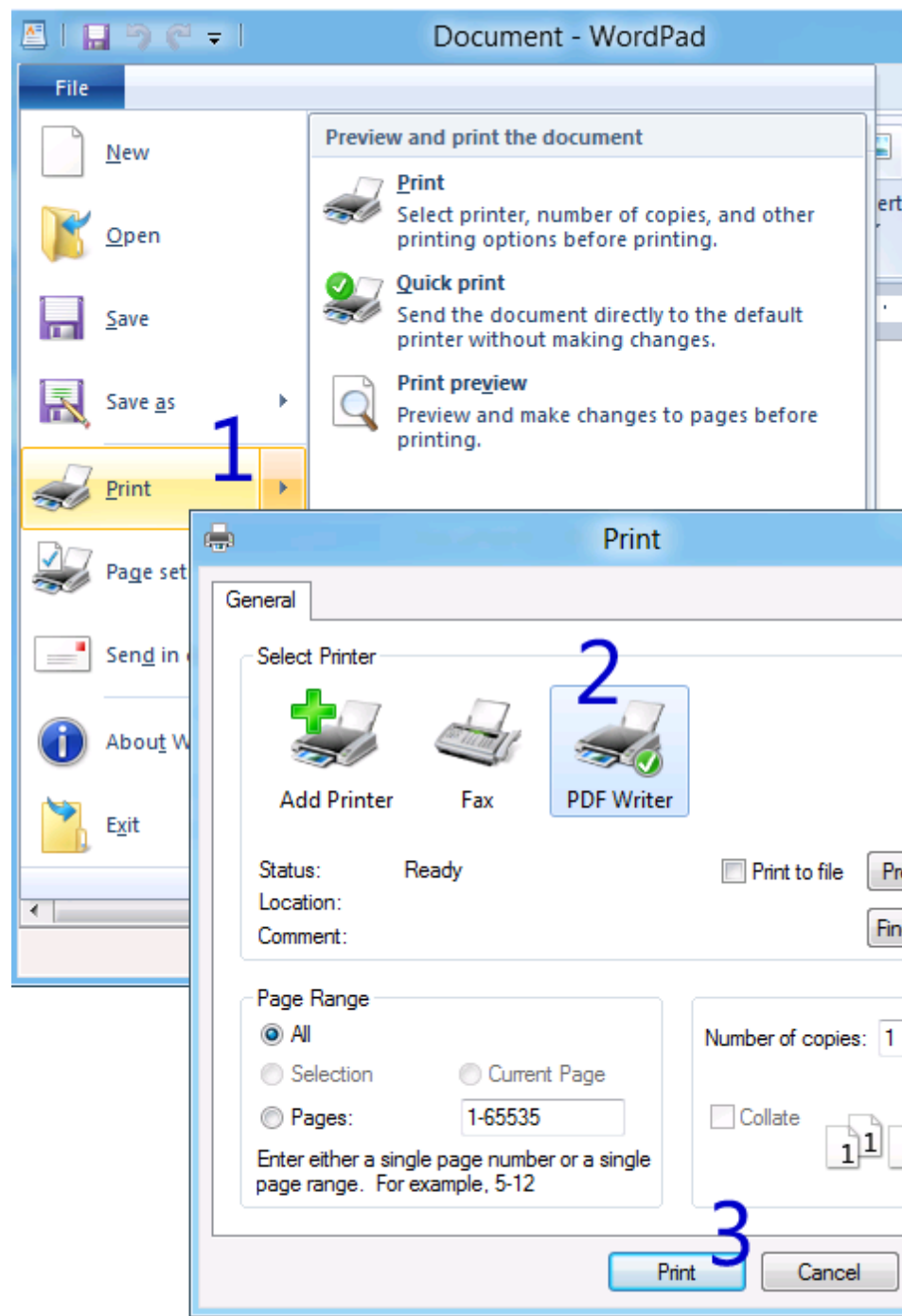
A few simple clicks will convert almost any of your existing documents to a high quality PDF file.

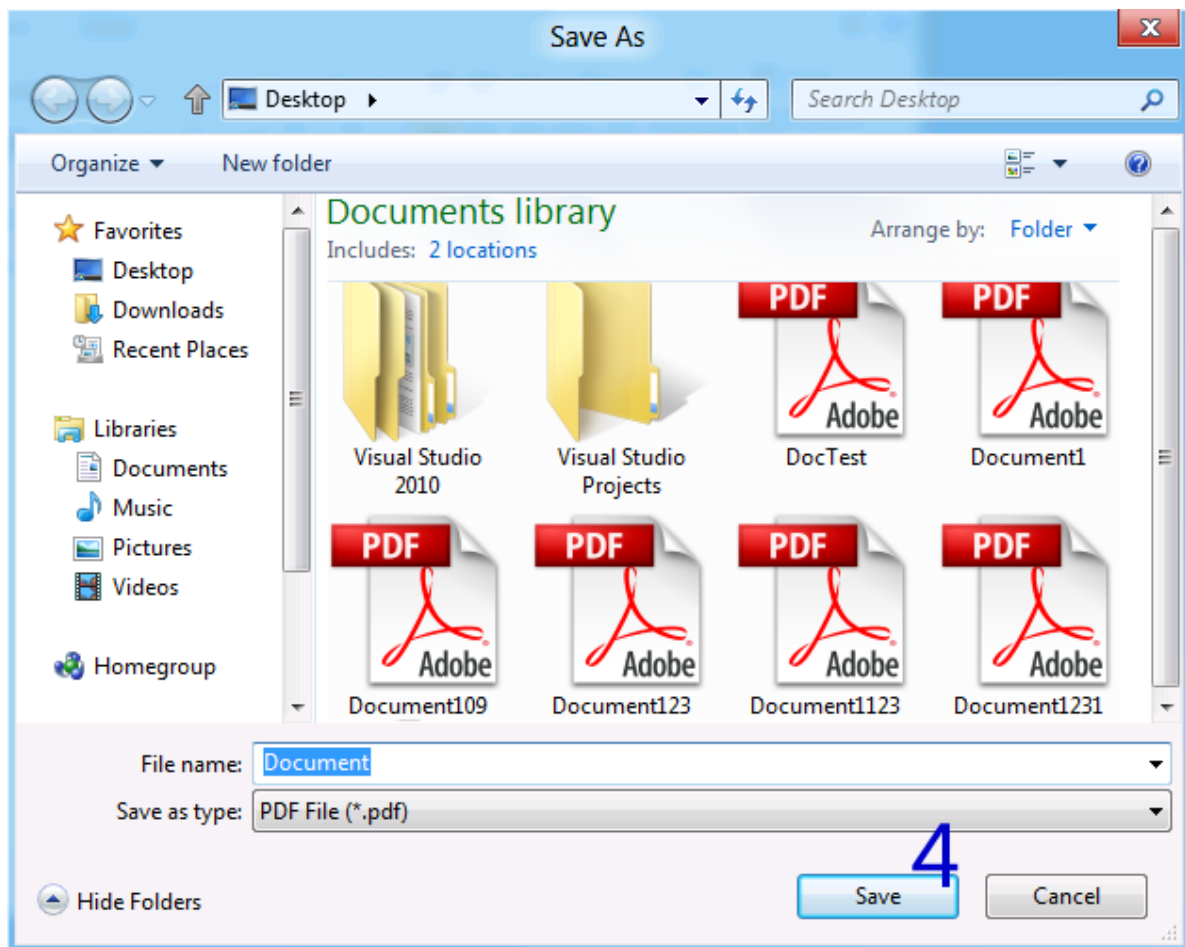
PDF Writer installs itself as a virtual print driver. After a successful installation, a **PDF Writer** printer will appear in your Printers and Faxes folder/list.

To create PDF files, all you have to do is to print your documents (from Microsoft Word, Excel, PowerPoint, Visio, Access, Publisher, Outlook, WordPad, NotePad or any other software) to this **PDF Writer** printer.

Open a document, choose Print and select the **PDF Writer** printer. Confirm your Print. It will ask you where to save the PDF file and when finished, the PDF file will be automatically opened.





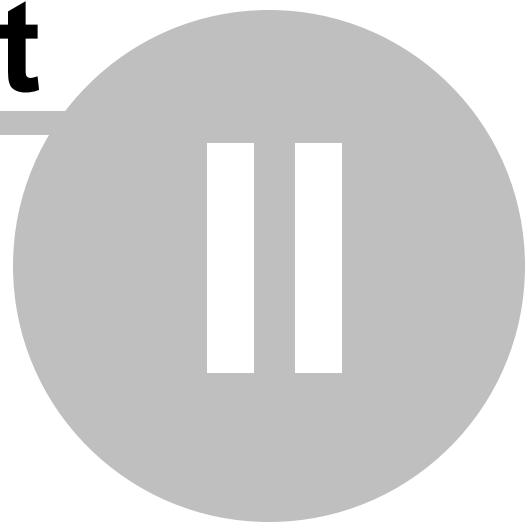


# Top Level Intro

This page is printed before a new  
top-level chapter starts

# Part

---



## 2 PDF Writer for Windows 10

### PDF Writer for Windows 10



#### Create PDF document from any Windows 10 program.

PDF Writer for Windows 10 is a quick solution for creating high-quality, press-ready, full-featured, more secured PDF documents that can be e-mailed, published and viewed with any PDF reader. The created PDF files are compliant to the Adobe PDF Specification, full-text searchable and totally vector-based.

PDF Writer allows you create and optimize PDF output for its intended use. You can make PDF documents small for Web display or high resolution for printing with this PDF Writer's powerful compression features. You can also embed fonts, if needed, in the PDF document to ensure correct document display.

Besides font embedding, PDF Writer adds security to your files with password features. You can also restrict viewing, printing, editing, or copying of documents to only individuals with the correct password.

Automated output is supported by PDF Writer, and you can bypass the Save-As-PDF dialog and output the PDF files in a folder of your preference.

Paper size, page orientation, custom paper size definition, and scaling options as well as PDF document meta information options, such as subject, title, keyword, author, are all included in the PDF Writer printing preferences window.

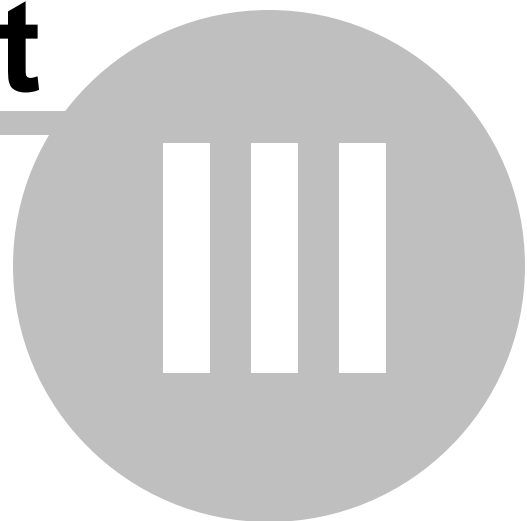
PDF Writer makes the creation of PDF documents fairly easy. Just print to a PDF Writer printer as you normally print to an inkjet or LaserJet printer, and you will get the PDF file you need.

# Top Level Intro

This page is printed before a new  
top-level chapter starts

# Part

---



### 3 PDF Writer for Windows Server 2016

## PDF Server for Windows Server 2016



**Create full-featured Adobe PDF files by printing from within any Windows 10 application on the client to the shared PDF printer on the server.**

Handy and intuitive, PDF Server for Windows Server 2016 works seamlessly with most business applications. Through a familiar Print Dialog interface, you can convert existing documents to PDF. A detailed tutorial can guide you through all the functions and features at hand. Anyone looking for a solid PDF solution will find it in PDF Server for Windows Server 2016.

Unlike many similar server-based software, PDF Server intercepts documents extremely fast on their way to the printer, creating a version in Adobe's PDF format instead of spitting out a physical piece of paper.

The software installs as a virtual PDF print driver, which means users need only click the **print** button in any application to create a PDF file. Users can choose the page size and orientation, resolution, and whether a font should be embedded or not. It allows documents to be encrypted, and user permissions to be set. A specific image can be set as a page background to watermark a document. The conversion speed and quality is incredibly high, and generated PDF file is arguably the smallest in the world. With the caveat that there are similar products widely available that offer much the same functionality, we recommend PDF Writer for Windows Server 2016 software product to you as a high-quality, high-performance, server-based, one-stop solution for deploying PDF creation ability across your organization!

Main features include 128-bit RC4 encryption with password and access control; TrueType, OpenType, Type1, CID-Type1, Multiple Masters Type1, OpenType/CFF, pure CFF, CEF Windows FNT/FON, X11 PCF font embedding into PDF files; CIE color space and ICC profile integrated with PDF files; Convert web pages into PDF; Restrict viewing, printing, editing, or copying of documents to only individuals with the correct master password; Compress PDF to the extreme; Remove hidden sensitive data that would have possibly embedded into PDF; CIE, RGB, sRGB, CMYK Color Space support; Live hyperlinks; Fast Web view; Define custom paper size; Choose orientation, resolution up to 4800 dpi; Scan to PDF; Compliant to the Adobe PDF Specification; full-text searchable; totally vector-based output; Microsoft Windows Terminal Server and Citrix MetaFrame XP / Presentation Server support; Fully compatible with terminal services environment; Serve unlimited concurrent users / clients; Multi-threaded rendering; Support Microsoft Point-and-Print Deployment; Support Windows 10/8.1/8/7/Vista/XP/2000 client; Designed for and Certificated for Windows Server 2016, Windows Server 2012, Windows Server 2008, Windows Server 2003, Windows 2000 Server; Installable on Windows 10, Windows 7, Windows Vista, Windows XP, Windows 2000 with reduced performance when served as print server.

# Top Level Intro

This page is printed before a new  
top-level chapter starts

## Part

---



IV

## 4 Product Comparison

### Product Comparison



**Which product should I pick?** Select the product you need!

[PDF Writer for Windows 10](#) is a desktop-based product, designed for workstations and laptops.

[PDF Writer for Windows Server 2016](#) is a server-based product, designed for servers.

Both products feature the same, however, PDF Writer for Windows Server 2016 installs a network shared printer namely *PDF Writer* on the server, and this printer is accessible by any client computer across the network.

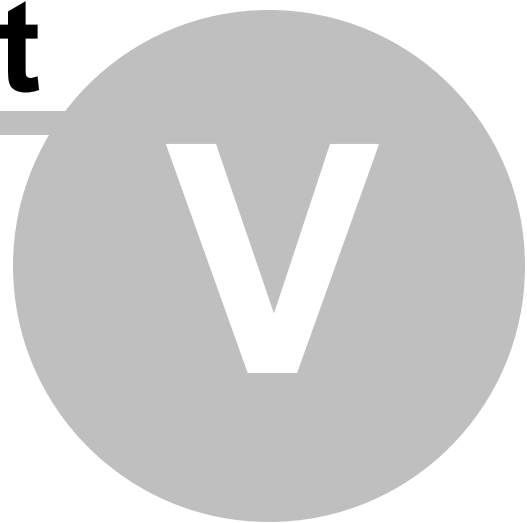


# Top Level Intro

This page is printed before a new  
top-level chapter starts

# Part

---



## 5 Features

### Features



Main features include:

- Create high-quality, press-ready, full-featured, more secured PDF files;
- 128-bit RC4 encryption with password and access permission control;
- TrueType, OpenType, Type1, CID-Type1, Multiple Masters Type1, OpenType/CFF, pure CFF, CEF Windows FNT/FON, X11 PCF font embedding into PDF files;
- CIE color space and ICC profile integrated with PDF files;
- Convert web pages into PDF;
- Restrict viewing, printing, editing, or copying of documents to only individuals with the correct master password;
- Compress PDF to the extreme;
- Remove hidden sensitive data that would have possibly embedded into PDF;
- CIE, RGB, sRGB, CMYK Color Space support;
- Live hyperlinks;
- Fast Web view;
- Define custom paper size;
- Choose orientation;
- Resolution up to 4800 dpi;
- Scan to PDF;
- Compliant to the Adobe PDF Specification;
- Full-text searchable;
- Totally vector-based output.

Additional features in [PDF Writer for Windows Server 2016](#) include:

- Multi-threaded rendering
- Serve unlimited concurrent users / clients
- Support Microsoft Point-and-Print Deployment
- Fully compatible with terminal services environment

# Top Level Intro

This page is printed before a new  
top-level chapter starts

# Part

---

A large, light gray circle containing the Roman numeral 'VI' in white, bold, sans-serif capital letters. The circle is positioned to the right of the 'Part' text and the horizontal line.

# VI

## 6 Hard Facts

### Hard Facts



#### Hard Facts

Adobe PDF Version: PDF 1.4, PDF 1.5, PDF 1.6, PDF 1.7  
Maximum Resolution: 4800 dpi  
Maximum Paper Size: 4800 X 4800 dpi  
PDF Engine Speed: 760 PPM (Page Per Minute)  
Rendering Intent: Absolute, Saturate, Relative  
Font Embedding: TrueType, OpenType, Type1, CID-Type1, Multiple Masters Type1, OpenType/CFF, pure CFF, CEF Windows FNT/FON, X11 PCF font  
Font Manipulation: Embedding, Subsetting  
Print Driver Version: Version-3 (Windows NT 5.0 or later)  
Print Driver Architecture: x86/x64 (32-bit/64-bit)  
Supported Operating Systems: Windows 10, 8.1, 8, 7, Vista, XP, 2000, 2003, 2008, 2012, 2016  
Compression Method: Run Length, ZIP, JPEG lossless, JPEG non-lossless, JPEG2000  
Color Space: CMYK, sRGB, RGB  
Print Quality: Desktop publishing, Digital Publishing, and Commercial Publishing  
Encryption: 128-bit RC4 (high)  
Supported Format: 2,600 graphics and document formats  
Server Compatibility: Citrix/terminal services environment, Windows Server  
Metadata: Embedding, Adding, Removing, Editing  
Paper Sheets Size: Standard, Custom  
Maximum PDF Size: 6335 MB  
PDF Merge Capability: Append to existing, Insert at the beginning of existing  
Device Emulation: Enabled  
Business Graphics Support: ICC Profile enabled  
Orientation: Portrait, Landscape  
Preview: Preview PDF paper/page size, View PDF result after creation  
Printer sharing: Point-and-Print support  
Network printer support: Enabled  
Adobe Acrobat required: No  
GhostScript required: No

# Top Level Intro

This page is printed before a new  
top-level chapter starts

# Part

---



VII

## 7 System Requirement

### System Requirement



**Designed for Microsoft Windows 10, Windows 7, Windows Vista, XP, Windows 2000, Windows Server 2003, and Windows Server 2008, Windows Server 2012, Windows Server 2016.**

#### Basic Requirement

CPU: Pentium 4 1.2GHz or AMD equivalent  
RAM: 64MB  
Free Space: 20 MB

#### Recommended Requirement

CPU: Pentium 4 1.7 GHZ or AMD equivalent  
RAM: 256MB  
Free Space: 60 MB

#### Server OS Requirement:

Windows Server 2016  
Windows Server 2012  
Windows Server 2008  
Windows Server 2003  
Windows 2000 Server  
Windows Terminal Server  
Citrix MetaFrame XP  
Citrix Presentation Server

Compatible with:

Windows 10  
Windows 8.1  
Windows 8  
Windows 7  
Windows Vista  
Windows XP  
Windows MCE  
Windows 2000 Professional

#### Client OS Requirement:

Recommended:  
Windows 10

Windows 8.1  
Windows 8  
Windows 7  
Windows Vista  
Windows XP  
Windows MCE  
Windows 2000 Professional

# Top Level Intro

This page is printed before a new  
top-level chapter starts

## Part





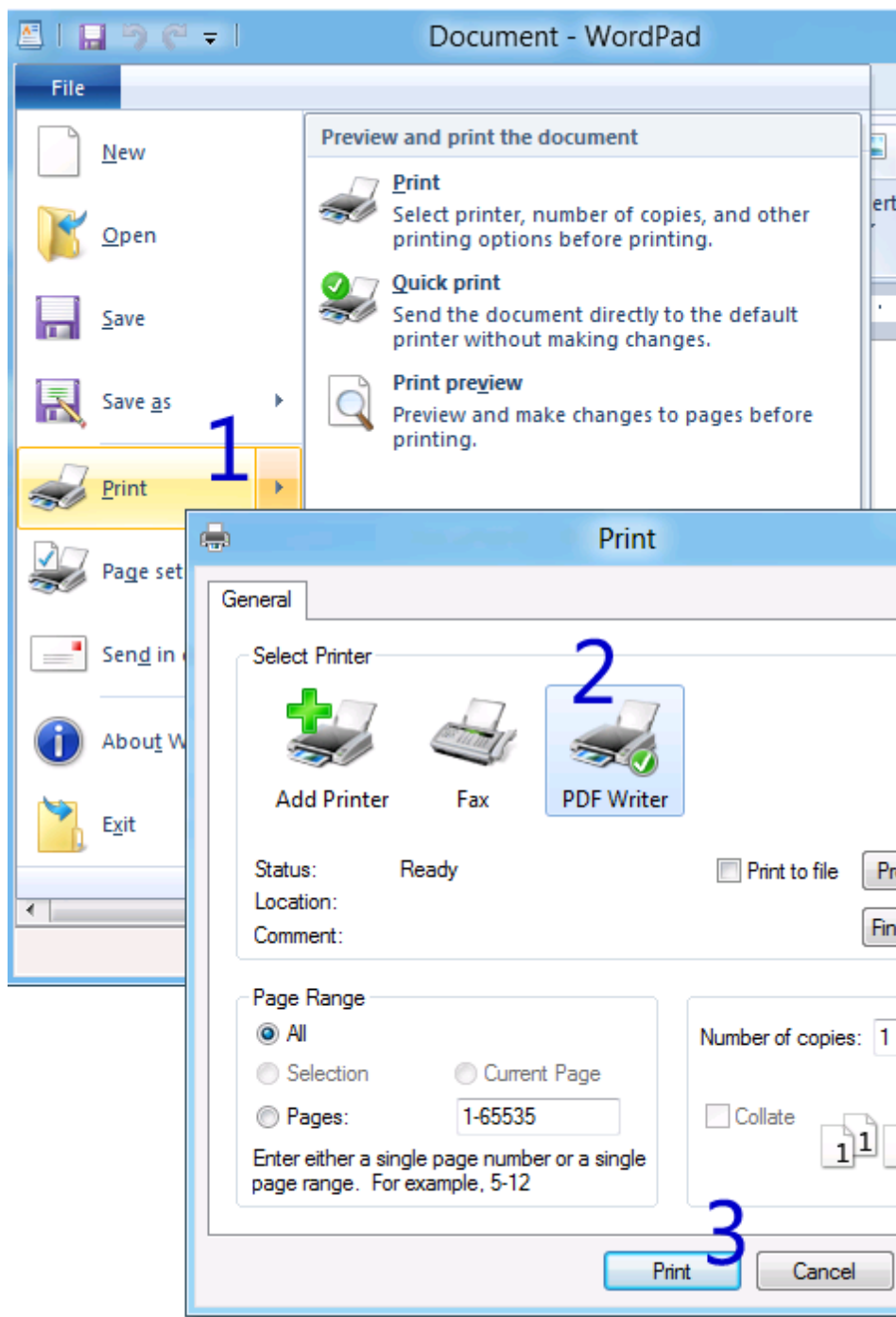
## 8 Creating PDF files

### Creating PDF files

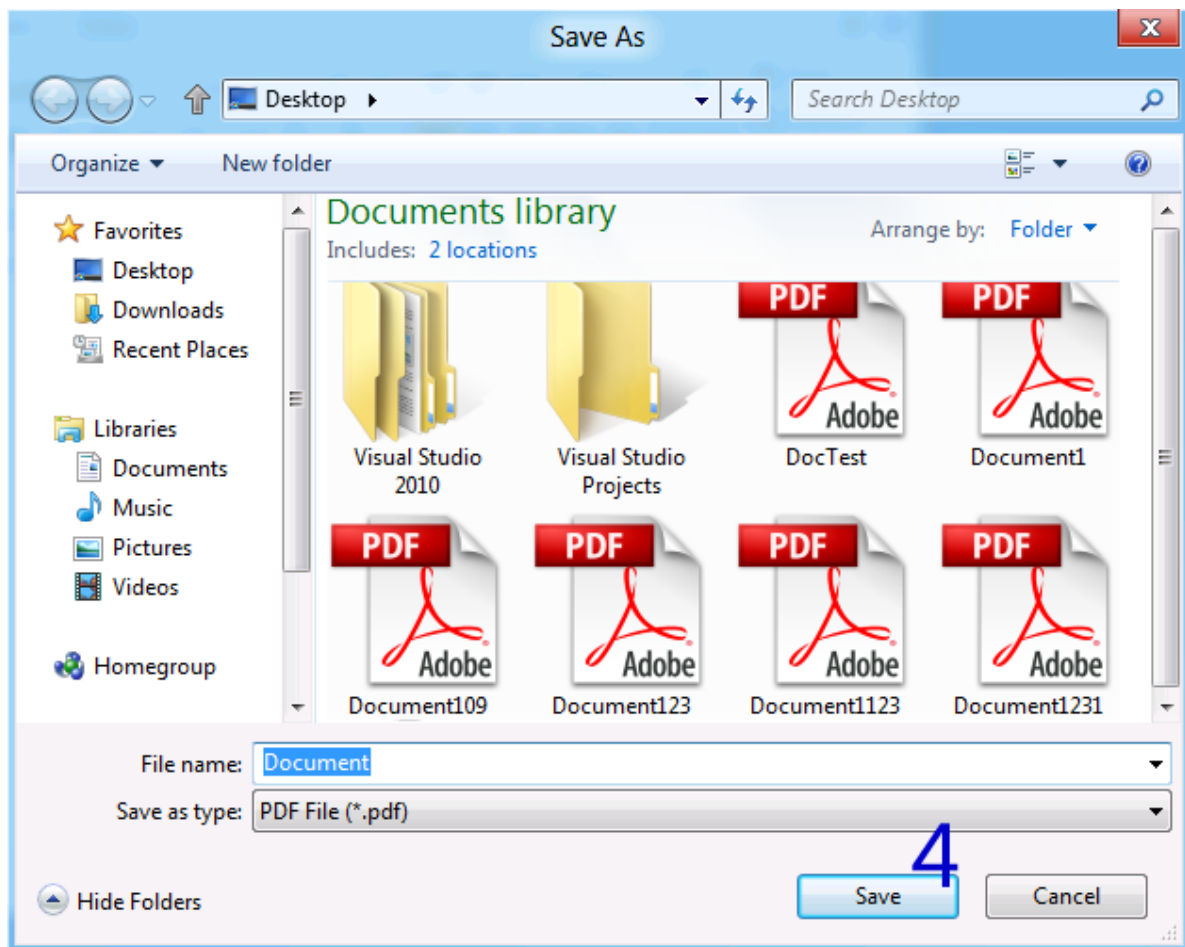


**To create PDF files, all you have to do is to follow the 1-2-3 steps:**

1. Open a document , choose Print.
2. Select **PDF Writer** printer.
3. Confirm your Print.



It will ask you where to save the PDF file and when finished, the PDF file will be automatically opened in your PDF viewer, usually in Adobe Reader X or Microsoft Modern Reader.



# Top Level Intro

This page is printed before a new  
top-level chapter starts

## Part

---



IX

## 9 PDF General Settings

### PDF General Settings



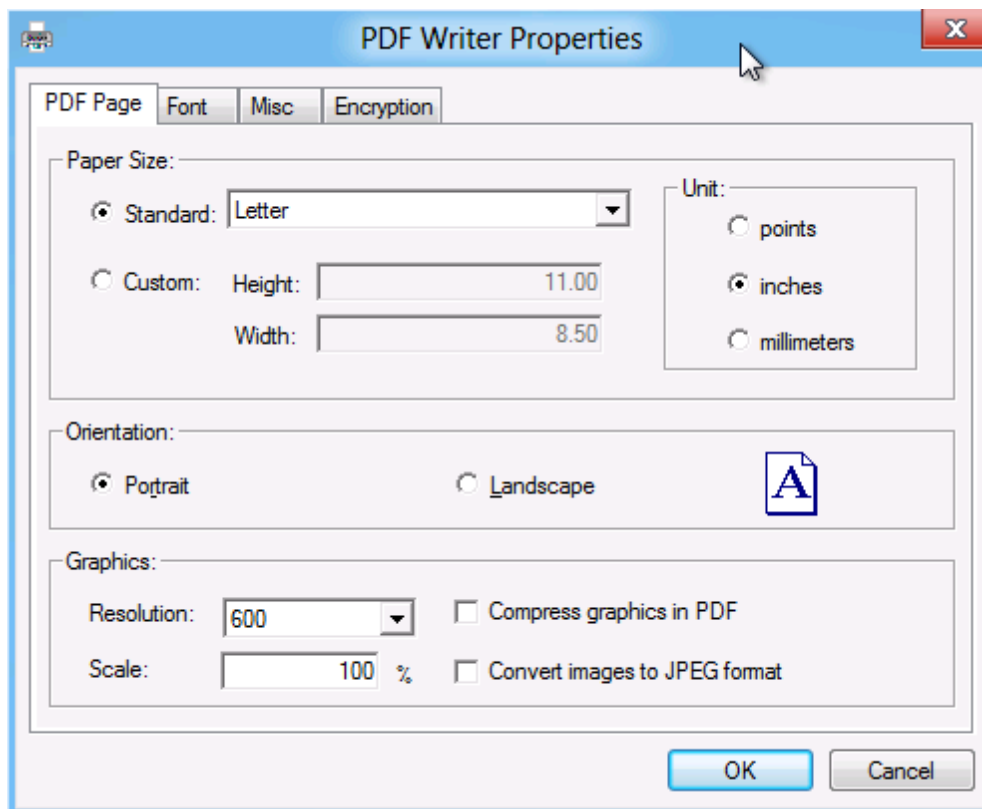
#### PDF Page Settings Tab

Not everything fits neatly onto a standard page. Sometimes you need a larger page size, especially if you're creating engineering drawings or other technical documents. PDF Writer supports ISO, ANSI, JSI, and ARCH formats, making it easy to produce high-quality PDF documents from virtually any large-format document. Just use the **PDF Writer** printer - which is automatically installed with PDF Writer series products - to print from your application, and customize the page dimensions for the size you need. Width and Length value can be specified to answer your specific need.

Care much on the resolution of your PDF document? In this PDF Page Settings tab, you can specify the resolution from 72 dpi to 2540 dpi.

PDF Writer features zoom-in and zoom-out effect in the conversion from a source document to the final PDF document. The default scale is 100%, and you can change this value to virtually any percentage you want.

Either Landscape or Portrait should be specified as the default orientation. Print tickets sending from with an application, such as Microsoft Office, may override the default orientation. Therefore, you could get a PDF file with different page orientation for separate pages, preserving the exact layout and contents of your original document.

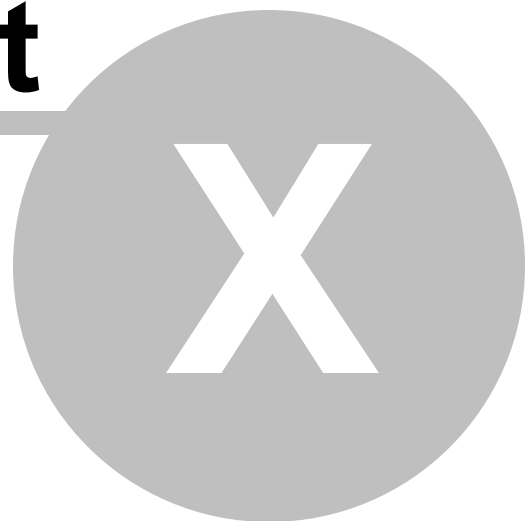


# Top Level Intro

This page is printed before a new  
top-level chapter starts

# Part

---



## 10 PDF Font Embedding

### PDF Font Embedding



#### Font Tab

When PDF Writer gains access to a font used in your source document, it can embed the font in the resulting PDF document. Font embedding ensures that all readers will see the text in its original font and be able to print the file using the original fonts; however, embedding fonts increases file size.

#### Font Embedding and Substitution:

PDF Writer series products can embed TrueType, OpenType, Type1, CID-Type1, Multiple Masters Type1, OpenType/CFF, pure CFF, CEF Windows FNT/FON, X11 PCF font in a PDF file to prevent font substitution if a user doesn't have that font on their system or available to their printer. For each font embedded, PDF Writer can embed the entire font or the subset of characters used in the file. Embedding a subset saves file space. Type 1 and TrueType fonts can be embedded if they are sent from your Windows application.

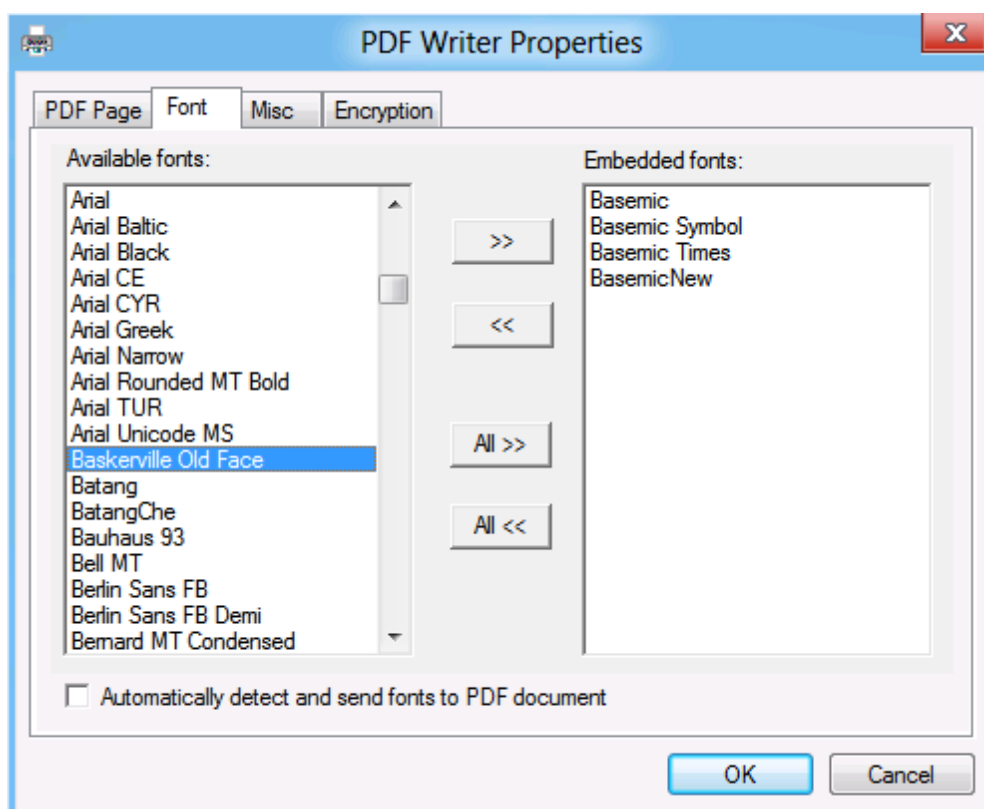
If a font is not embedded in a PDF file and the user does not have access to the original font on their system, PDF Writer substitutes the font with the nearest type. If the metrics of the original font are included in the PDF file, the Multiple Master typeface can stretch or condense to fit, to ensure that line and page breaks are maintained from the original document. The substitution cannot always match the shape of the original characters, however, especially if the characters are unconventional ones, such as script typefaces.

For Asian text, PDF Writer uses fonts from the installed Asian language packs or from similar fonts on the user's system. Fonts from some languages or with unknown encodings cannot be substituted; in these cases, the text appears as bullets in the file.

#### Automatically detect and send fonts to PDF document:

To embed all the required fonts, simply select "Automatically detect and send fonts to PDF document". However, in some cases, especially when handling Asian, Hebrew, Arabic, Greek, Russian fonts, this option might not always work. You have to manually embed all the fonts that you have been used in the source document; you would otherwise get a series of question marks or missing characters.





# Top Level Intro

This page is printed before a new  
top-level chapter starts

## Part

---



XI

## 11 Document Properties

### Document Properties



#### Misc Tab

With the massive volume of documents being produced every day, creators spend much of their time perfecting content and layout. Far too often, authors ignore the finishing touch, the addition of metadata - an essential collection of information that helps make a document's unique content stand out in the crowd.

The inclusion of metadata can enable your documents with the proper identity so that users can find essential information quickly. When used with a search tool, these documents become part of an index that makes searching large numbers of PDF files fast and efficient.

You will see a number of default metadata options in a PDF document, none of which are populated by Microsoft Office applications other than Title, Subject, Author and Keywords. You can delete these placeholders if needed, but since there is no data there, it should not be a concern.

Metadata is hidden information in a computer file that may contain potentially dangerous or embarrassing information or lead to an accidental disclosure. In Office documents, there are many instances of data hidden in files, such as Word's Track Changes, that have been highly publicized.

For the most part, PDF is immune to these issues. PDFs represent the visual display as it will be printed. Still, it is a good idea to understand what if any risks are associated with PDF and metadata.

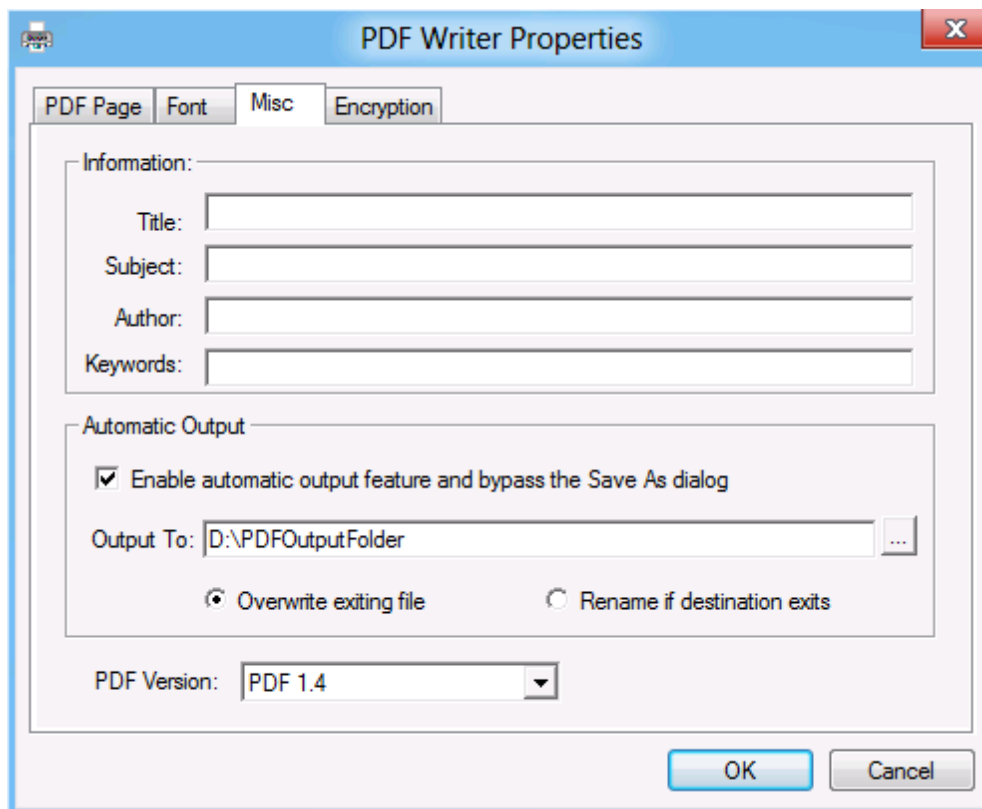
So, modernistically, here is what firms should be concerned about before sending out a PDF:

1. Are the Title, Subject, Author and Keyword fields empty?

Can be performed manually via Document Properties-->Description or in batch in Acrobat Reader.

2. Are there annotations on the document?

Can be deleted using the Comments tab in Document Properties.



# Top Level Intro

This page is printed before a new  
top-level chapter starts

## Part

---



XII

## 12 PDF Overwrite Options

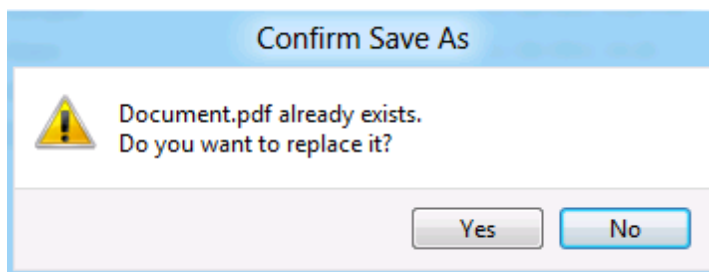
### PDF Overwrite Options



#### Confirm Save As Dialog

PDF Writer series products pop up a warning dialog if it finds the destination PDF file already exists.

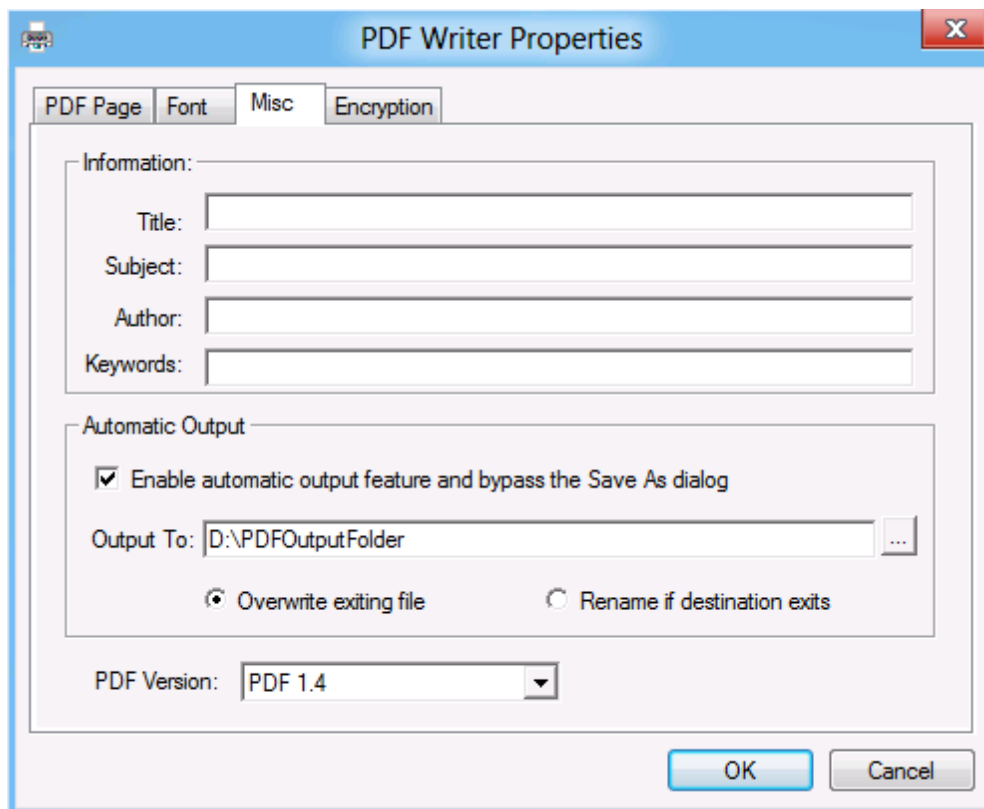
The warning dialog provides two options,



1. Yes - Overwrite
2. No - Do not overwrite, just ignore

You can enable **Automatic Output** in the Output Options to resolve the conflict without any prompt (do not pop up this Confirm Save As dialog as more).

To disable this warning dialog for good and all, you would probably be interested in letting the software know your choice in the **Misc** tab,



1. Check the option 'Enable automatic output feature and bypass the Save As dialog'
2. Specify the 'Output To' folder be it a local folder or a remote folder with a UNC name
3. Choose 'Overwrite existing file'

Unless you wish not to overwrite the existing file, you choose 'Rename if destination exists'.

# Top Level Intro

This page is printed before a new  
top-level chapter starts

## Part

---



XIII



## 13 PDF Versions

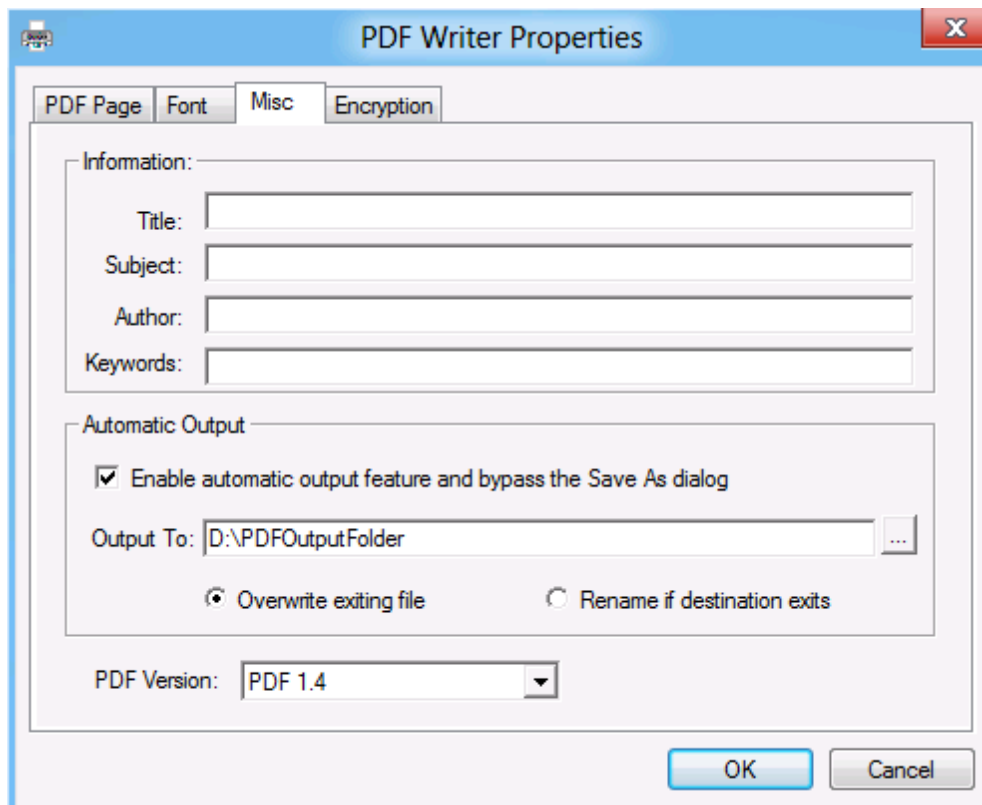
### PDF Versions

#### Misc Tab

Many time you will want to upgrade or downgrade or specify a specific PDF version for compatibility concern. Most publishing houses and editorials require you to generate your PDF document compliant to their specification, for example, PDF 1.5. Here 1.5 is the PDF version for solving compatibility issues.

You can generate PDF document of version 1.5 so that the publishing houses or editorials can accept your PDF submission after proper validation.

PDF 1.4 (Standard supported by Adobe Acrobat / Adobe Reader 5.0 or higher) and PDF 1.3 (Standard supported by Adobe Acrobat / Adobe Reader 4.0 or higher) are offered by PDF Writer. You can choose the PDF version of your output PDF file.



PDF files of version 1.4 can be opened, viewed, edited, printed, refined by virtually all applications across multiple platforms such as Microsoft Windows, Apple MacOS, IBM AS/400, IBM Mainframe, Linux, Unix, HP-UX, Android, WebOS, Sebian, and more.

# Top Level Intro

This page is printed before a new  
top-level chapter starts

# Part

---



## 14 PDF Document Security

### PDF Document Security



#### Encryption Tab

Password Protection:

To help prevent security problems, you can set a password on a PDF document before you send or share it. The password identifies the reader or owner of the PDF document and helps warn anyone who views it if the document was modified after it was password-protected. You can also determine whether the document can be modified or printed by applying PDF permissions before sharing the document.

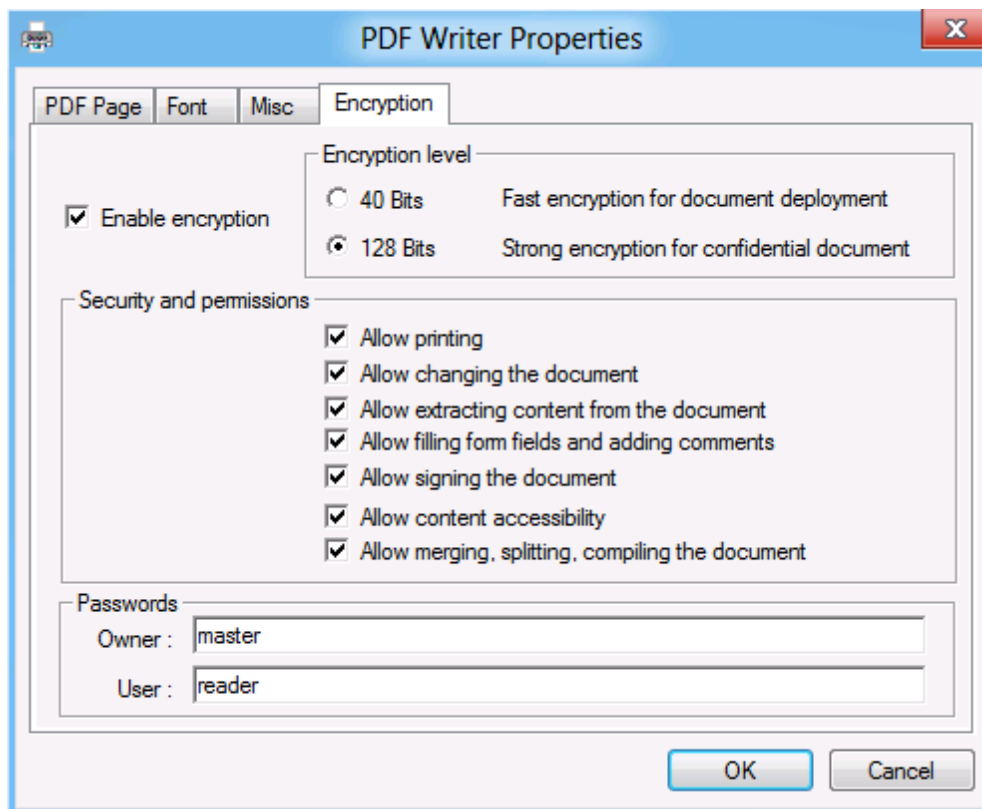
To secure your PDF document with password(s), the owner password is mandatory. When the user password is not set, the reader will not be prompted for a password to view this PDF, however, all the permission settings are still in effect.

To set, modify, and remove the permission settings, you are required to specify or enter the owner password. This password identifies the owner of the PDF document.

Permission Settings:

The following settings can be enabled or disabled to allow or disallow readers to operate on your PDF document,

1. Allow printing - *Printing in high resolution or low resolution*
2. Allow changing the document - *Any change except extracting pages*
3. Allow extracting content from the document - *Copying of text, images, and other content*
4. Allow filling form fields and adding comments - *Filling-in form fields and signing as well as commenting*
5. Allow signing the document - *Digitally sign the document or annotation*
6. Allow content accessibility - *Text access for screen reader device for the visual impaired*
7. Allow merging, splitting, compiling the document - *Inserting, deleting, and rotating of pages*



To access all the permission settings, you need to select 128 Bits encryption as the encryption level; 40 Bits encryption allows only a small set of the permission settings.

# Top Level Intro

This page is printed before a new  
top-level chapter starts

## Part

---



XV

## 15 Automatic Output

### Automatic Output



#### Misc Tab

The Automatic Output includes being able to overwrite or rename the generated PDF result to the target PDF file in time. Once a choice is made in the Output Options, PDF Writer series products acts according to the decision you make when the target PDF file exists.

Here are the two choices,

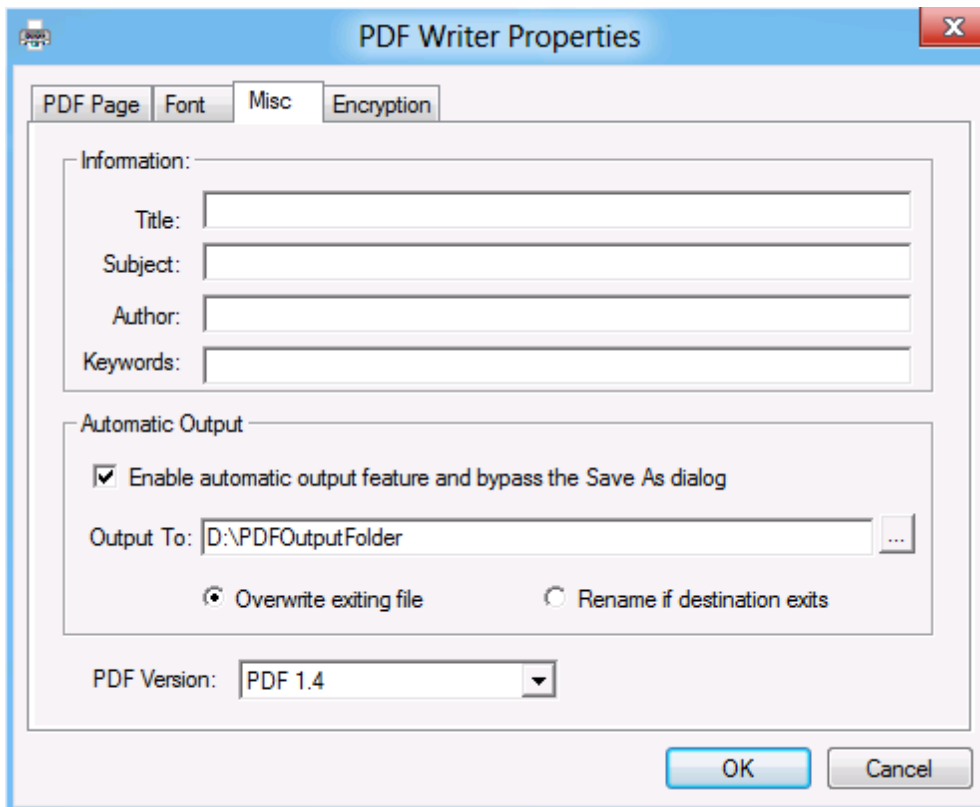
1. Overwrite existing file
2. Rename if destination exists

The following case describes how the first option decides the behavior of the PDF Writer:

Suppose you have a DailyReport.PDF file already in your "My Documents" folder, and you create a new PDF file from Microsoft Word, and specify DailyReport.PDF as the destination file name in the Save-As dialog. Now the conflict in file name happens. You will see a run-time warning dialog to prompt you to confirm which action to take,

1. Yes - Overwrite
2. No - Do not overwrite, just ignore

To bypass this **Confirm Save As** warning dialog for good and all, you should make a choice among 'Overwrite existing file' and 'Rename if destination exists' in the Automatic Output in Misc tab, as illustrated below,



**Output To:** You should specify a folder be it a local folder or a remote folder with a UNC name like \\PrintServer\John or \\192.168.1.6\PDFOut

**NOTE:**

A. You can't specify a file here. If you are looking for such a product that always output the PDF result to a specific file, feel free to contact us.

B. Before you specify your Output To folder, you need to assure that the folder already exists and PDF Writer print driver could have enough privilege to save the output PDF files to the folder.

# Top Level Intro

This page is printed before a new  
top-level chapter starts

## Part





## 16 Output Privilege Issues

### Output Privilege Issues



#### Save As PDF dialog / Misc Tab

Windows Vista introduces the concept of UAC (User Access Control) to enhance the overall security and stability of Microsoft Windows. UAC does not allow users without elevated privilege to have access to certain folders. Windows 7, the successor of Windows Vista, inherited the concept. If you runs PDF Writer on Microsoft Windows Vista, Windows 7, Windows 8, Windows 8.1, Windows 10, or later OS, you need to know that PDF Writer is designed to follow the UAC rules.

When you create a PDF file by printing to PDF Writer printer, you get the Save-As-PDF dialog, and you can navigate to the folder of your interest to save the PDF result. Sometimes, you would see the following error message after you click Save button to archive your PDF output,

You don't have permission to save in this location. Contact the administrator to obtain permission. Would you like to save in the blah blah blah folder instead?

You should click Yes button to save your document in your own user folders such as *My Documents* or *Desktop*. You can choose to save to other locations as well under the premise that you have enough privilege to save in other locations.

If you enable Automatic Output and bypass the 'Save As PDF' dialog, one thing should be noted. This is, before you specify your Output To folder, you need to assure that the folder already exists and PDF Writer print driver could have enough privilege to save the output PDF files to your folder.

# Top Level Intro

This page is printed before a new  
top-level chapter starts

## Part



XVI

## 17 Image Compression

### Image Compression

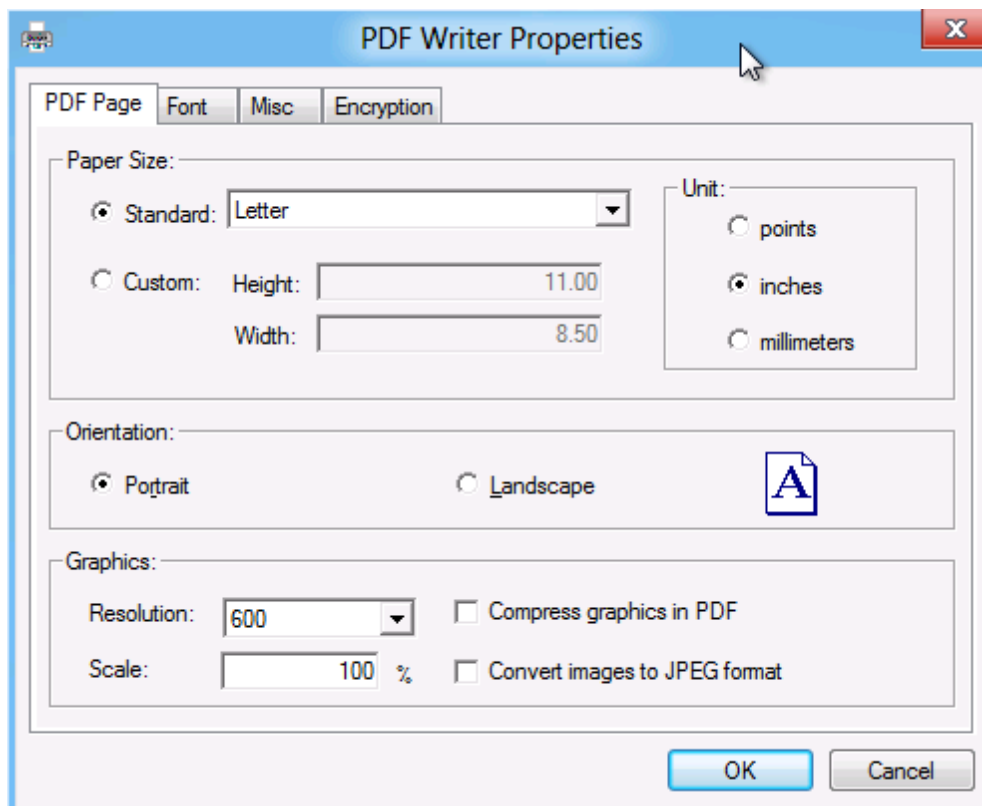
#### PDF Page Tab

In the process of conversion, PDF Writer can automatically compress text, line art, and resample monochrome, grayscale, color images. Depending on the settings you choose, compression and resampling can significantly reduce the size of a PDF file with little or no loss of detail and precision.

#### Available Options:

**Compress graphics in PDF** option is included in this PDF Page settings tab, and it allows you to compress images and graphics in PDF document and make it as smaller as possible.

**Convert images to JPEG format** allows you to convert all the images used in your document to JPEG format, and this would help reduce the output PDF file size.



#### Compression Algorithm:

**ZIP** is a compression method that works well on images with large areas of single colors or repeating patterns, such as screen shots and simple images. The ZIP method is lossless, which means it does not remove data to reduce file size and so does not affect an image's quality.

The **JPEG** (Joint Photographic Experts Group) compression method is suitable for grayscale or color images, such as continuous-tone photographs that contain more detail than can be reproduced on-screen or in print. JPEG is lossy, which means that it removes image data and may reduce image quality, but it attempts to reduce file size with the minimum loss of information. Because JPEG eliminates data, it can achieve much smaller file sizes than ZIP compression.

The **JPEG2000** is a wavelet-based image compression standard. It was created by the Joint Photographic Experts Group committee in the year 2000 with the intention of superseding their original discrete cosine transform-based JPEG standard (created about 1991). JPEG 2000 requires far greater decompression time than JPEG and allows more sophisticated progressive downloads, yet averages similar compression rates. JPEG 2000 becomes increasingly blurred with higher compression ratios rather than generating JPEG's "blocking and ringing" artifacts, complicating direct comparison of their respective compression rates. Images machine-judged to be of equivalent quality for both compression schemes often look better to humans in JPEG 2000 at low bitrates.

PDF Writer automatically detects the image type, quality, format and decide the best compression algorithms.

### Image Quality:

PDF Writer provides five JPEG options, ranging from Maximum quality (the least compression and the smallest loss of data) to Minimum quality (the most compression and the greatest loss of data). The loss of detail that results from the Maximum and High quality settings are so slight that most people cannot tell an image has been compressed; at Minimum and Low, however, the image may become blocky and acquire a mosaic look. The Medium quality setting usually strikes the best balance in creating a compact file while still maintaining enough information to produce high-quality images.

The **CCITT** (International Coordinating Committee for Telephony and Telegraphy) compression method is appropriate for black-and-white images made by paint programs and any images scanned with an image depth of 1 bit. CCITT is a lossless method.

PDF Writer provides the CCITT Group 3 and Group 4 compression options. CCITT Group 4 is a general-purpose method that produces good compression for most types of monochrome images. CCITT Group 3, used by most fax machines, compresses monochrome images one row at a time.

**Run Length** is a lossless compression option that produces the best results for images that contain large areas of solid white or black.

### Resampling Method:

Resampling refers to changing the pixel dimensions (and therefore display size) of an image. When you downsample (or decrease the number of pixels), information is deleted from the image. When you resample up (or increase the number of pixels), new pixels are added based on color values of existing pixels. You specify an interpolation method -

average downsampling, bicubic downsampling, or subsampling - to determine how pixels are added or deleted.

To resample an image, PDF Writer combines pixels in a sample area to make one larger pixel. You provide the resolution of your output device in dots per inch (dpi), and PDF Writer combines pixels as needed to reduce the image's resolution (ppi) to the specified dpi setting:

**Average downsampling** averages the pixels in a sample area and replaces the entire area with the average pixel color at the specified resolution.

**Bicubic downsampling** uses a weighted average to determine pixel color and usually yields better results than the simple averaging method of downsampling. Bicubic is the slowest but most precise method, resulting in the smoothest tonal gradations.

**Subsampling** chooses a pixel in the center of the sample area and replaces the entire area with that pixel at the specified resolution. Subsampling significantly reduces the conversion time compared with downsampling but results in images that are less smooth and continuous.

PDF Writer automatically detects the image type, quality, format and choose the most suitable resampling method.

# Top Level Intro

This page is printed before a new  
top-level chapter starts

# Part

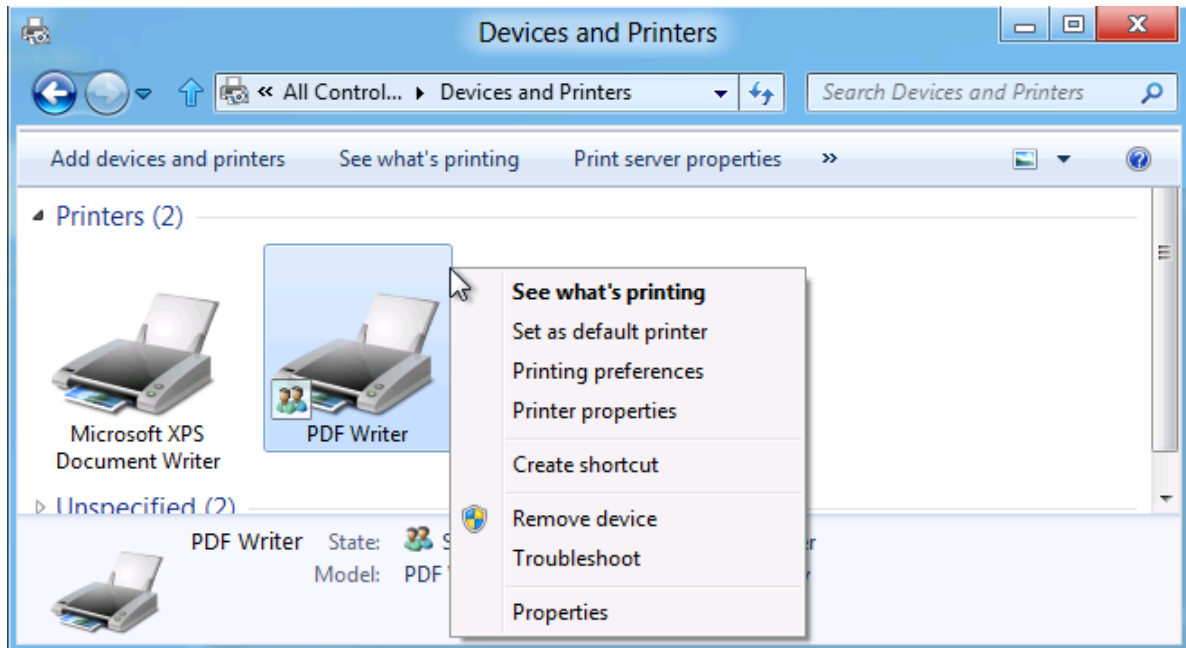
---



## 18 PDF Color Management

# PDF Color Management

### Printer Properties Tab



By their very natures, a monitor and printer reproduce color in completely different ways. Color Management is designed to reconcile the different color capabilities of scanners, monitors, and printers to ensure consistent color throughout the creation, display, and print process. Ideally, this means that the colors displayed on your monitor accurately represent the colors of the final output. It also means that different applications, monitors, and operating systems will display colors consistently.

### Color Management Policies:

**Keep Device Color in RGB:** This option leaves device-dependent colors unchanged and preserves device-independent colors as the nearest possible equivalent in PDF. It is a useful option for print shops that have calibrated all their devices, used that information to specify color in the file, and are only outputting to those devices.

**Keep System Color in sRGB:** This option lets you embed an ICC profile compliant to sRGB standard when distilling files and calibrates color in the images, making colors in the resulting PDF files device-independent. Since sRGB standard is popular, Color Management does not embed ICC profiles any more. However, device-dependent color spaces in files (RGB, Grayscale, and CMYK) are converted to sRGB color space.

**Convert to sRGB Color Space:** This option calibrates color in the file, making the color device-independent. All colors in CMYK and RGB images are converted to sRGB.

**Convert to CMYK Color Space:** This option calibrates color in the file, making the color device-independent. All colors in RGB and sRGB images are converted to CMYK.

Grayscale images are usually left unchanged. This option usually reduces the size and increases the display speed of PDF files because less information is needed to describe RGB images than CMYK images. Because RGB is the native color space used on monitors, no color conversion is necessary during display, which contributes to fast online viewing. This option is recommended if the PDF file will be used online or with low-end printers. CMYK is recommended for prepress or press printing and high-end printers.

### Rendering Intent:

This option allows you to specify how to map colors between two color spaces. The result of any particular method depends on the profiles of the color spaces. For example, some profiles produce identical results with different methods:

**Perceptual** maintains the relative color values among the original pixels as they are mapped to the destination gamut. This method preserves the visual relationship between colors, although the color values themselves may change.

**Saturation** maintains the relative saturation values of the original pixels. This method is suitable for business graphics, where the exact relationship between colors is not as important as having bright saturated colors.

**Relative Colorimetric** remaps the white point of the source space to the white point of the destination space.

**Absolute Colorimetric** disables the matching of white and black points when converting colors. This method is not generally recommended unless you must preserve signature colors such as those used in trademarks or logos.

Relative Colorimetric is the default rendering intent.

### ICC Profile:

For **RGB**, choose a profile to define the color space of all RGB images in files. The default, sRGB IEC61966-2.1, is generally a good choice because it is becoming an industry standard and is recognized by many output devices. You can also choose None to prevent RGB images from being converted.

For **CMYK**, choose a profile to define the color space of all CMYK images in files. The default is U.S. Web Coated (SWOP) v2. You can also choose None to prevent CMYK images from being converted.



# Top Level Intro

This page is printed before a new  
top-level chapter starts

## Part



## 19 Remove Watermark

### Remove Watermark



The trial versions of the PDF Writer series products stamp an **Unregistered** watermark at the footer of all PDF pages it creates. To remove the watermark, purchasing a license or registering the product is required. After you purchase, you get the full retail version, which creates PDF files without the **Unregistered** watermark.

For more information on purchasing,

<http://www.windows10pdf.com/purchase.html>

# Top Level Intro

This page is printed before a new  
top-level chapter starts

# Part

---



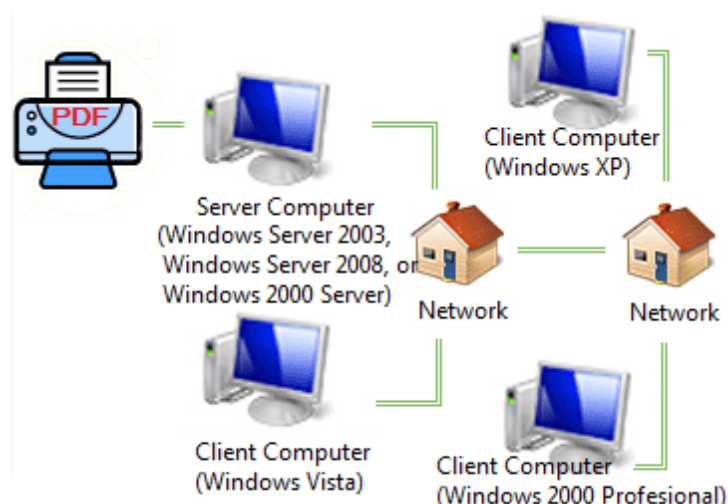
## 20 Total PDF Solutions

### Total PDF Solutions

#### PDF Solutions for Enterprise, Company, Academic Institutions and your Organizations!

Deploy professional PDF creation capabilities from a centralized server to all your Windows 10/8.1/8/7/Vista/XP/2000 clients across your network

A solution that works on Windows 10, Windows 8.1, Windows 8, Windows 7, Windows Vista, Windows XP, Windows 2000, and you don't need to deploy your PDF printers manually. This solution requires you to buy Client Licenses for all your clients.



#### PDF Print Server features include:

Centralized control; Deploy PDF printers automatically to all or selected clients; Generate deployment script on the fly; Dynamically synchronize PDF settings from server to clients; Print time management; Printer sharing automation on client side; Easy scripting integration; Print Statistics; PDF Print Server Diagnostics; Performance Tuning; Workload Balancing; Print Job Optimization; Multi-threading and hyper-threading; Multi-level Cache for Print Job and Print Ticket; Smart Print Scheduler; Network Deployment and Optimization.

#### PDF Print Driver features include:

128-bit RC4 encryption with password and access control; TrueType, OpenType, Type1, CID-Type1, Multiple Masters Type1, OpenType/CFF, pure CFF, CEF Windows FNT/FON, X11 PCF font embedding into PDF files; CIE color space and ICC profile integrated with PDF files; Export PDF to JPEG, BMP, PNG, GIF, TIFF image formats; Restore Microsoft Word document from PDF file; Convert PDF into web pages; Create CMYK PDF; Restrict viewing, printing, editing, or copying of documents to only individuals with the correct master password; Compress PDF to the extreme; Remove hidden sensitive data that

would have possibly embedded into PDF; CIE, RGB, sRGB, CMYK Color Space support; Render with ICC profile and specify rendering intent during conversion; text, image, compound with PDF transparency; live URLs; fast Web view; PDF Merge; PDF overlay; PDF stationary; create PDF layers; Append PDF generation result to existing PDF file; add page number to PDF document; Add watermark; Add attachment; define custom paper size; choose orientation, resolution up to 4800 dpi; Scan to PDF; Compliant to the Adobe PDF Specification; full-text searchable; totally vector-based output.

**Automatic Deployment:**

PDF Writer Client Setup allows you to automatically deploy the PDF solutions from your server side to all your clients. For more information, read the [Client Setup Utilities](#) chapter.

**Licensing Model:**

In this solution, you are required to purchase at least one PDF Writer Server license for your print server computer, and one Client License for each client. For example, if you have 50 clients, and you need to buy 50 Client Licenses, or a 50-User License Pack.

# Top Level Intro

This page is printed before a new  
top-level chapter starts

# Part

---



## 21 Getting Support

### Getting Support



If you have a question about purchasing or using the PDF Writer software that isn't answered in the FAQ, or would like to report a bug you found in the software, or have a suggestion for a new feature you'd like to see in a future release, please don't hesitate to write to us.

#### Contact Sales Representative:

[sales@windows10pdf.com](mailto:sales@windows10pdf.com)

#### Contact Technical Support Staff:

[support@windows10pdf.com](mailto:support@windows10pdf.com)

#### Contact North American Sales Office:

Share-It! USA  
9625 West 76th Street, Suite 150  
Eden Prairie, MN 55344  
USA

Languages: English

Tel: 1-800-903-4152  
Fax: (724) 850-8187

#### European Sales Office:

Share-it! - element 5 AG  
Vogelsanger Str. 78  
50823 Cologne  
Germany

Languages: English, German, French, Italian, Spanish and Portuguese

Tel: +49.221.31088.20  
Fax: +49.221.31088.29

# Top Level Intro

This page is printed before a new  
top-level chapter starts

## Part

---

A large, light gray circle containing the Roman numeral 'XXI' in white. The circle is positioned to the right of the 'Part' header, with a horizontal line extending from the header to the circle's edge.

XXI



## 22 Frequently Asked Questions

### Frequently Asked Questions



#### FAQ

The most frequently-asked questions about installing and using the PDF Writer products are answered below. If you have a question that isn't answered here or elsewhere on this Web site, please write to [support@windows10pdf.com](mailto:support@windows10pdf.com).

**Q: Is it legal to create PDF with your solution?**

A: Absolutely legal. PDF has become an open standard. Any individual or company can write PDF creation software to create PDF files fully compliant to the Adobe PDF specification.

**Q: Does your software support business graphics and press-ready output?**

A: Yes. PDF Writer series products supports CMYK, RGB, sRGB color spaces and 16 combinations of graphics and image compressions and rendering to assure the quality of business graphics and press-ready output.

**Q: Our company has multiple sites, will one site license be enough?**

A: Our Site License allows you to install the software on unlimited number of servers and workstations (including portables, notebooks, and laptops) in multiple offices of your company in different locations, cities, and countries.

**Q: Can I get discount if I purchase multiple licences?**

A: We offer volume discounts for individuals and companies that purchase multiple licenses. For more information on pricing, visit <http://www.windows10pdf.com/purchase.html>

**Q: I am not sure if your product works with Windows Server?**

A: Our product is designed and certificated for Windows 2000 Server, Windows 2000 Advanced Server, Windows 2000 Datacenter, Windows Server 2003, and Windows Server 2008.

**Q: I installed [PDF Writer for Windows Server 2016](#) on a Windows Server 2016, and the client can't access the shared PDF Writer printer. How come?**

A: Here is the checklist,

- 1) PDF Writer software has been installed with Administrative privilege onto the Windows Server 2016.
- 2) Guest account or an appropriate user account has been enabled to make the PDF Writer printer accessible by printing.
- 3) Firewall has been disabled or an appropriate rule to bypass firewall has been applied.
- 4) PDF Writer Client software has been launched on the client with the correct parameters.

Q: I installed [PDF Writer for Windows Server 2016](#) on a Windows 10 computer, but failed to share the PDF Writer printer for other computers. Why?

A: Here is the checklist,

- 1) PDF Writer has been installed on the Windows 10 computer successfully.
- 2) You have enabled printer sharing by selecting "Start"->"Programs"->"PDF Writer"->"Enable Printer Sharing"
- 3) Firewall has been disabled or an appropriate rule to bypass the firewall has been applied.
- 4) PDF Writer Client software has been launched on the client with the correct parameters.

Q: I installed PDF Writer for Windows Server 2016 on a Windows 10 computer. Can I share my PDF Writer printer for the other computer?

A: Sure. Please follow,

- 1) On your Vista computer, select "Start"->"Control Panel"->"Printers and Faxes", right-click on the icon of the "PDF Writer" printer, and choose "Sharing...". Enable the printer sharing and specify PDFWriter as the share name.
- 2) On your client computer, launch the PDF Writer Client Install software to install the shared PDF Writer printer from the server.

Q: Do I need to uninstall a previous version of PDF Writer before I install a newer version?

A: No. There is no need to uninstall the previous version before installing a newer version of the program.

Q: Do I need to uninstall the trial version of PDF Writer software before I install the full version?

A: No. The full version of PDF Writer software can be installed 'over' the trial version. This means that the trial version's files will be replaced by the full version's files.

Q: Can I use PDF Writer software on both my desktop and portable computer?

A: If you purchased a single-user license for the full version of PDF Writer software, you can use the software on one or more computers you own, provided the program is only used on one computer at a time. If more than one person will be using PDF Writer

software on different computers at the same time, you must purchase a multiple-user license.

Q: Do I need to purchase PDF Writer for Windows Server 2016, if I want to install PDF Writer on a server computer?

A: Yes. Only PDF Writer Server can be installed on a server computer. You are required to purchase a license if you want to continue using PDF Writer beyond the trial period.

Q: Which product works on Microsoft Windows 7 ?

A: All our products work on Windows 7.

Q: What is your upgrade policy?

A: 3-Year Free Upgrades.

Q: What are the differences between [PDF Writer for Windows 10](#) and [PDF Writer for Windows Server 2016](#)?

A: You can read the PDF Writer product comparison chart to get some ideas on the differences between our products. [PDF Writer for Windows 10](#) is desktop product, designed for the PDF novice and customers who don't want to invest much on PDF creation software and need to create PDF file on Microsoft Windows 10. [PDF Writer for Windows Server 2016](#) is designed for corporate users who want to create PDF files on the client side by printing their document to the **PDF Writer** printer on the server side.

Q: How can I make CMYK PDF document?

A: Before you print to PDF Writer printer, click the Properties button of your PDF Writer printer, explore to the Color Space tab, set the Color Space to CMYK rather than RGB or sRGB.

# Top Level Intro

This page is printed before a new  
top-level chapter starts

# Part

---



## 23 Purchase & Order

### Purchase & Order



#### Why to purchase?

The trial versions of the PDF Writer series products stamp an **Unregistered** watermark at the page footer of all PDF pages . To remove the watermark, purchasing a license or registering the product is required. After you purchase, you get the full retail version, which creates PDF files without the **Unregistered** watermark.

- You can purchase the full version of the PDF Writer software from **share-it!**, a leader in secure online order processing and online software delivery. For your convenience, a variety of ordering methods and payment options are available.

For more information on purchasing,

<http://www.windows10pdf.com/purchase.html>

#### Billing & Payment:

Billing currency: USD, EUR, GBP, AUD, CAD, JPY, CHF.

Payment options: Credit card, Debt card, PayPal, Wire Transfer, Bank Check, [Purchase Order](#) etc.

NOTE: The simplest and cheapest and fastest way to buy our software is to order it Online.

#### Benefits of Purchase & Registration:

When you purchase the full version, you'll receive:

- Use of the software beyond the 90-day trial period
- No registration reminders or trial version watermarks on PDF files
- Free updates & upgrades to the latest version & future versions.
- Product support by e-mail totally free.

#### Delivery Options:

You can choose either of the following delivery methods:

- 1) **Download**: You'll receive a download link to the full version immediately after your order is processed.
- 2) **Download + CD**: You'll receive a download link as described above, and the setup file for the full version will also be mailed to you on one compact disc.

## 23.1 Online Purchase

### Online Purchase



#### Ordering Online

The easiest and fastest way to get the full version of the PDF Writer software is to order through share-it!'s secure online store using a credit card, debit card, or PayPal. share-it! accepts Visa, MasterCard, American Express, JCB, and Diners Club, as well as U.K. debit cards Solo and Switch/Maestro.

Ordering online is easy, fast, safe, and secure!

Online credit-card, debit-card, and PayPal orders are processed immediately!

You can download the software right away!

share-it! also accepts payment by bank/wire transfer, check, and cash. If you choose one of these payment options, you'll receive the necessary bank account information or postal address by e-mail after your order is processed.

#### Ready to purchase online?

<http://www.windows10pdf.com/purchase.html>

## 23.2 Purchase Order

### Purchase Order



#### Ordering by PO

Business customers can place a purchase order (PO) through our resellers' customer service by fax or mail.

POs should be printed directly from your accounting system on company letterhead. All POs must include [the required information](#) so that our resellers can process your order.

## 23.3 Other Ways of Order

### Other Ways of Order



If you choose to mail or fax your order to share-it!, be sure to include your name,

postal-mail address, and e-mail address, and to specify the product, quantity, and payment option you desire.

### **share-it! Europe**

share-it! - Digital River GmbH  
c/o Digital River Ireland Ltd.  
Unit 153  
Shannon Free Zone West  
Shannon Co. Clare  
Ireland

Phone: +49 221 31088-20  
Fax: +49 221 31088-29

Languages: English, French, German, Italian, Portuguese, Spanish

### **share-it! USA**

share-it!  
c/o Digital River, Inc.  
10380 Bren Road West  
Minnetonka, MN 55343, USA

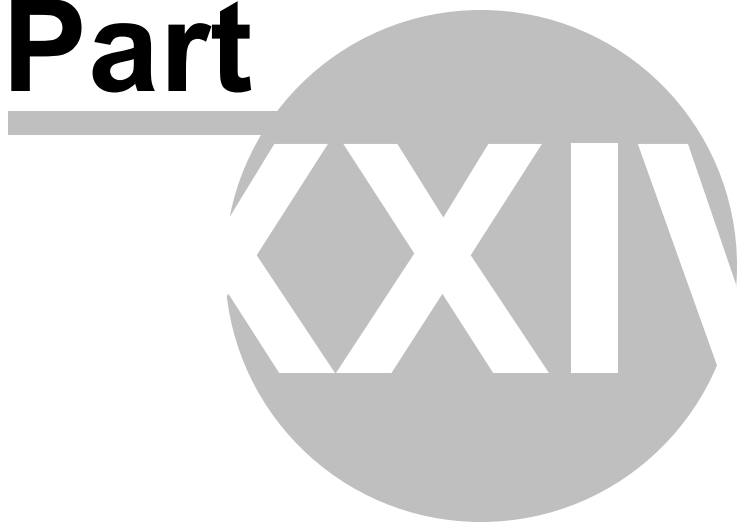
Toll-free: 1-800-903-4152 (U.S.)  
Phone: 1-952-646-5747 (Int'l)  
Fax: 1-952-646-4552

Language: English

# Top Level Intro

This page is printed before a new  
top-level chapter starts

## Part





## 24 Client Setup Utilities

### Client Setup Utilities



The Client Setup Utility allows you to deploy the PDF Writer printer automatically rather than manually to all your clients from your logon script or environment setup script.

According to the licensing model, you are required to purchase at least one PDF Writer for Windows Server license for your print server computer, AND one Client License for each client. For example, if you have 50 clients, and you are suggested to buy 50 Client Licenses, or a 50-User License Pack.

```
C:\>ClientSetup.exe
Client Setup for PDF Server for Windows Server 2016 1.01
Copyright (C) 2003-2016 Wondersoft. Rights Reserved.
```

Usage: ClientSetup.exe [ServerName] [PrinterName] ([PrinterDisplayName])

```
C:\>ClientSetup.exe 10.20.3.91 "PDF Writer" "My PDF Printer"
```

```
C:\>ClientSetup.exe print-srv001 "PDF Writer" "This PDF Creator"
```

ServerName can be the server name or the IP address of the server where the PDF Writer for Windows Server 2016 software is installed.

PrinterName should always be "PDF Writer" unless the name of the "PDF Writer" printer on the server side is changed to another name.

PrinterDisplayName is the actual display name of the shared printer on the client side. This parameter is optional, and it takes effect with Windows Vista or later only.

# Top Level Intro

This page is printed before a new  
top-level chapter starts

# Part

---



## 25 About Us

### About Us



Wonder in software

Wondersoft Inc., one of the booming innovative software providers, was founded in 2000. We provide the market with many pieces of desktop publishing software with professional features and easy-to-use design.

Contact Wondersoft Inc.

12, Avenue Georges Clemenceau  
NANTERRE Cedex 92024  
FRANCE

Web: <http://www.windows10pdf.com>  
Email: [info@windows10pdf.com](mailto:info@windows10pdf.com)  
Phone: +33.156381274  
FAX: +33.156381230

# Index

## - A -

About Us 75

## - C -

Client Setup Utilities 73  
Creating PDF files 25

## - D -

Document Properties 35

## - F -

Features 18  
Frequently Asked Questions 65

## - G -

Getting Support 63

## - H -

Hard Facts 20

## - I -

Image Compression 51

## - M -

Modern PDF Server 14  
Modern PDF Writer 12

## - O -

Online Purchase 70  
Other Ways of Order 70  
Output Options 46

Overview 8

## - P -

PDF Attachment 41  
PDF Color Management 55  
PDF Document Security 43  
PDF Font Embedding 32  
PDF General Settings 29  
PDF Overwrite Options 38  
Product Comparison 16  
Purchase Order 70

## - R -

Remove Watermark 58

## - S -

System Requirement 22

## - T -

Total PDF Solutions 60

## Endnotes 2... (after index)

Back Cover