



Print to PDF Toolkit Pro

© 2020 Wondersoft

Note:

To change the product logo for your own print manual or PDF, click "Tools > Manual Designer" and modify the print manual template.

Title page 1

Use this page to introduce the product

by Wondersoft

This is "Title Page 1" - you may use this page to introduce your product, show title, author, copyright, company logos, etc.

This page intentionally starts on an odd page, so that it is on the right half of an open book from the readers point of view. This is the reason why the previous page was blank (the previous page is the back side of the cover)

Print to PDF Toolkit Pro

© 2020 Wondersoft

All rights reserved. No parts of this work may be reproduced in any form or by any means - graphic, electronic, or mechanical, including photocopying, recording, taping, or information storage and retrieval systems - without the written permission of the publisher.

Products that are referred to in this document may be either trademarks and/or registered trademarks of the respective owners. The publisher and the author make no claim to these trademarks.

While every precaution has been taken in the preparation of this document, the publisher and the author assume no responsibility for errors or omissions, or for damages resulting from the use of information contained in this document or from the use of programs and source code that may accompany it. In no event shall the publisher and the author be liable for any loss of profit or any other commercial damage caused or alleged to have been caused directly or indirectly by this document.

Printed: May 2020 in (whereever you are located)

Publisher

...enter name...

Managing Editor

...enter name...

Technical Editors

...enter name...

...enter name...

Cover Designer

...enter name...

Team Coordinator

...enter name...

Production

...enter name...

Special thanks to:

All the people who contributed to this document, to mum and dad and grandpa, to my sisters and brothers and mothers in law, to our secretary Kathrin, to the graphic artist who created this great product logo on the cover page (sorry, don't remember your name at the moment but you did a great work), to the pizza service down the street (your daily Capricciosas saved our lives), to the copy shop where this document will be duplicated, and and and...

Last not least, we want to thank EC Software who wrote this great help tool called HELP & MANUAL which printed this document.

Table of Contents

Foreword	6
Part I Introduction	8
1 Microsoft Print to PDF.....	8
2 Print to PDF Toolkit Pro.....	10
Part II Features	13
Part III Automatic Save and Open	17
1 Show Save-As-PDF Dialog.....	17
2 Bypass Save-As-PDF Dialog.....	19
3 Destination Folder	21
4 Destination File.....	22
5 Duplicate Files	23
6 File Naming Convention.....	24
7 Post-Processing.....	25
8 Append PDF File.....	26
9 Email PDF.....	27
10 Print PDF.....	28
Part IV Encryption	31
1 Password Protection.....	31
2 Permission Management.....	32
3 Encryption Algorithm.....	33
Part V Security	35
1 PDF Document Properties.....	35
2 Avoid Information Leakage.....	35
Part VI Appearance	38
1 PDF Page Mode	38
2 PDF Layout Mode	39
3 PDF Document Initial Appearance.....	40
Part VII Batch Conversion	42
1 Supported File Types.....	42
2 Photos to PDF	42
3 Web Page to PDF	44

4 Efficiency	45
Part VIII Paper Size	47
1 Add More Paper Sizes.....	47
2 Define Custom Paper Size	48
Part IX Print Quality	51
1 Image Resolution	51
2 PDF Compression.....	51
Part X Backup and Restore	53
1 Printer Settings	53
2 Print to PDF Toolkit Pro Settings.....	53
Part XI Repair and Troubleshooting	55
1 Reinstall Microsoft Print to PDF.....	56
2 Uninstall Microsoft Print to PDF.....	57
3 Diagnose Issues.....	58
4 Set As Default Printer	60
5 View Print Jobs.....	61
6 Clear Print Queue.....	63
Part XII Shortcuts to Microsoft Print to PDF	65
1 Show Printer	65
2 Printer Properties.....	65
3 PDF Options.....	66
Part XIII Minimize Print to PDF Toolkit Pro	69
Part XIV PDF Resources	72
Part XV Command-Line Version and SDK	74
Part XVI Purchase	76
1 License Type.....	76
2 How to purchase	76
3 How to register.....	77
Index	0

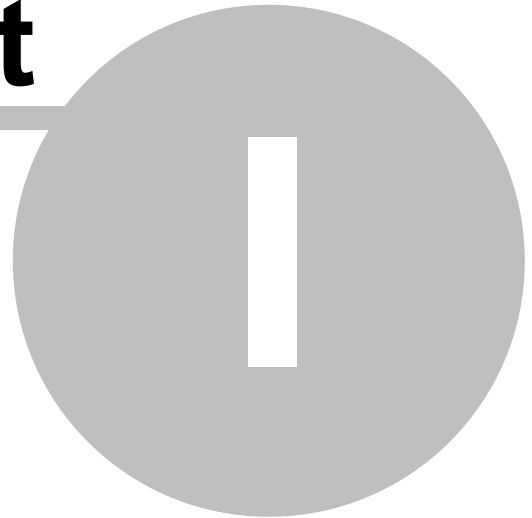
Foreword

This is just another title page
placed between table of contents
and topics

Top Level Intro

This page is printed before a new
top-level chapter starts

Part

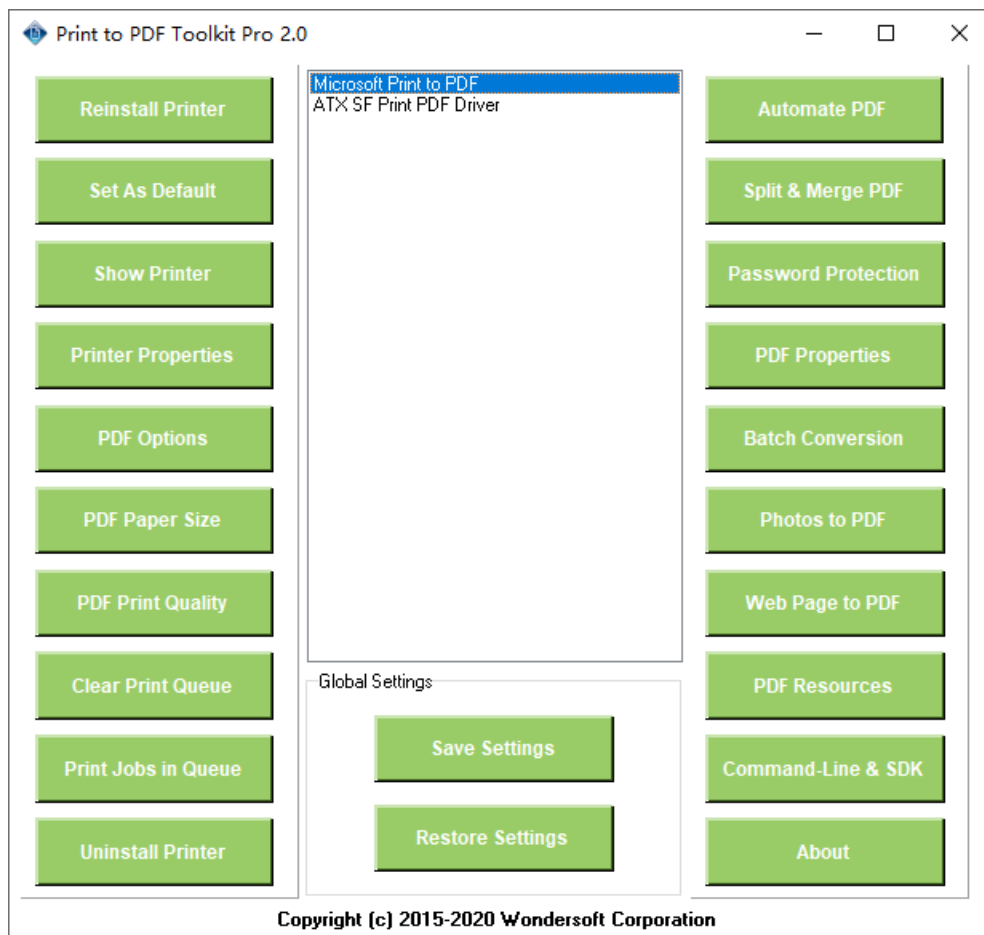


1 Introduction

Do you want to convert your Microsoft Word, Excel, PowerPoint, photos, graphics images, web pages or any other type of documents into a PDF file? Microsoft Print to PDF is a new software feature that comes pre-installed in Windows 10 as a virtual printer. As long as you have a license for Windows 10, you can use it without paying extra. Instead of printing on paper, Microsoft Print to PDF printer creates a PDF document from any document within any application, just as if it was printed. Just open your document in any application that has printing capability, press Ctrl + P keyboard shortcut or use the Print option from the application menu. You should see Microsoft Print to PDF available in the list of printers. Select it and click on Print. Choose where you want to save your PDF file and it's done.

Microsoft Print to PDF does not bring you all the features of Adobe PDF or other professional PDF creation software. Is there a way to enrich the features and functionalities of Microsoft Print to PDF printer? Print to PDF Toolkit Pro software is the answer.

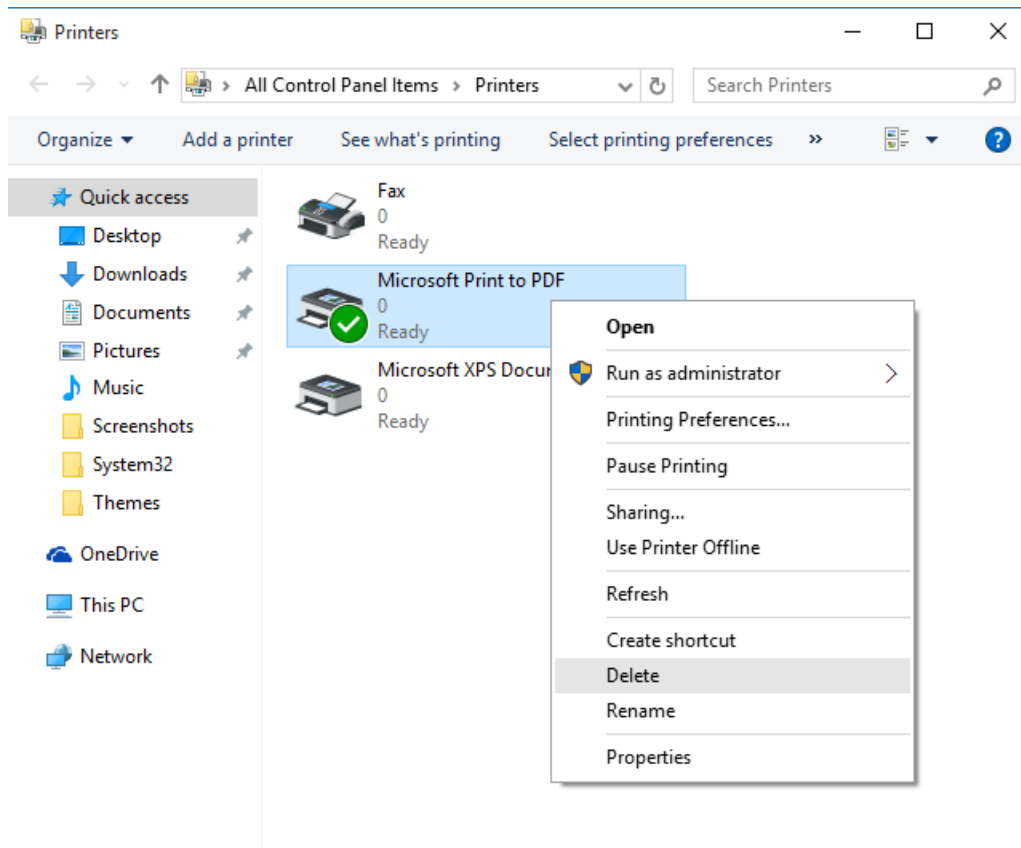
If you happen to accidentally delete or need to create another Microsoft Print to PDF printer, this user guide will show you how.



1.1 Microsoft Print to PDF

PDF, which stands for Portable Document Format is an electronic document invented by Adobe, which maintains its original formatting regardless of the device it is viewed on.

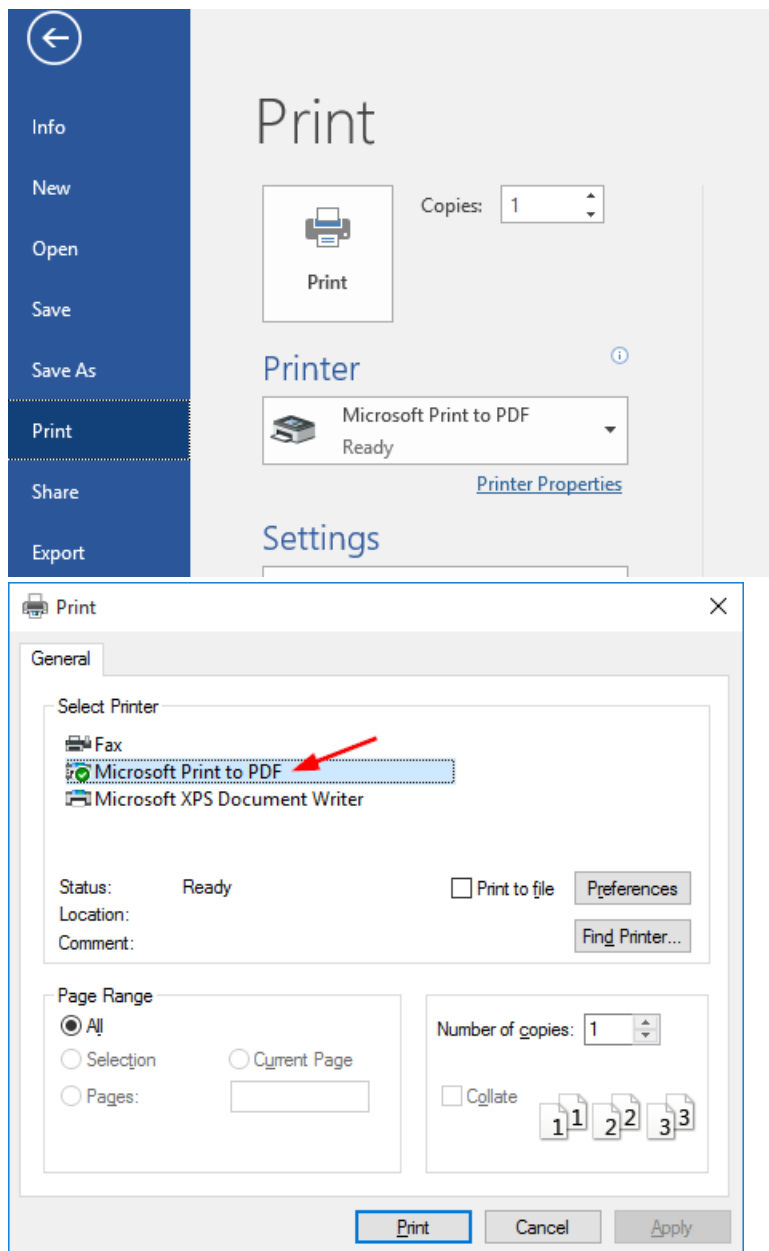
Microsoft Print to PDF is a new software feature that comes pre-installed in Windows 10 as a virtual printer. Microsoft Windows 10 includes native support for viewing PDF files using Microsoft Edge web browser and creating PDF files using this virtual printer. It allows you to convert Microsoft Word, Excel, PowerPoint documents, photos, graphics images, web pages or any other type of documents into PDF files one by one. Instead of printing on paper, Microsoft Print to PDF printer creates a PDF document from any document within any application, just as if it was printed.



Simply print your document from your software application to this Microsoft Print to PDF printer, and you would get the PDF file you need. The process of printing is the conversion from your document to PDF.

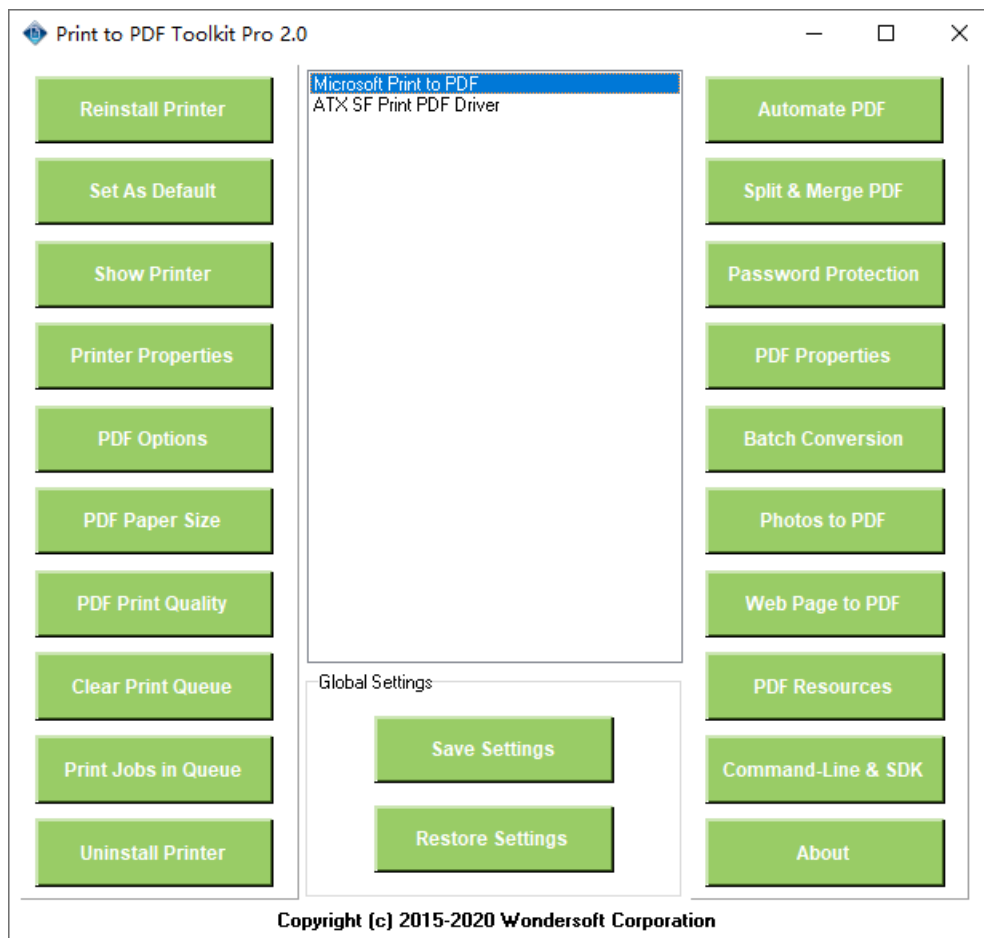
Just open your document in any application that has printing capability, press Ctrl + P keyboard shortcut or use the Print option from the application menu. You should see Microsoft Print to PDF available in the list of printers. Select it and click on Print. Choose where you want to save your PDF file and it's done.

As long as you have a license for Windows 10, you can use Microsoft Print to PDF without paying extra.



1.2 Print to PDF Toolkit Pro

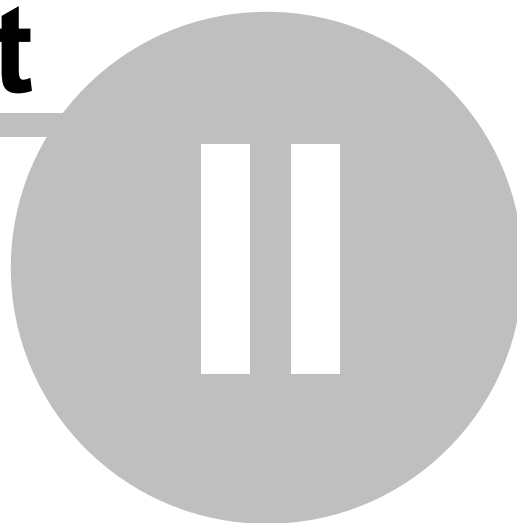
Print to PDF Toolkit Pro software enhances the features of Microsoft Print to PDF in many ways. For instance, it allows adding multiple paper types and defining custom paper sizes for Microsoft Print to PDF printer, it allows password protection for PDF documents, allow users to save PDF files without prompt (skip Save-As-PDF dialog), to append PDF files, to automatically output PDF files to a folder or a file, to customize PDF meta data in PDF properties, to change image resolution to reduce PDF file size, to change PDF layout and page mode to impress readers. It enables users to convert photos to PDF in batch, convert web pages to PDF in batch, and offers batch conversion for Word to PDF, Excel to PDF, PowerPoint to Excel, TXT to PDF, RTF to PDF, DWG to PDF, DXF to PDF. Print to PDF Toolkit Pro includes all the features of [Repair Tool for Microsoft Print to PDF](#), therefore, users can repair or reinstall Microsoft Print to PDF printer and software package at any time.



Top Level Intro

This page is printed before a new
top-level chapter starts

Part



2 Features

Print to PDF Toolkit Pro software enhances Microsoft Print to PDF printer on Windows 10 in that it allows users to automatically open PDF files after creation, save PDF files without prompt (no Save As PDF dialog), automatically save PDF files to a folder or a specific file, append and merge PDF files, password protect PDF files, batch print, batch conversion, define custom paper size, adjust PDF print quality, set PDF properties meta data, convert photos to PDF, convert web pages to PDF, print to PDF and email. Print to PDF Toolkit Pro does not install any other PDF printer driver, rather it enriches the functionalities and features of Microsoft Print to PDF printer on your Windows 10 computer. It is a great tool for PDF automation and save your budget to make Microsoft Print to PDF feature-rich and comparable to other professional PDF creation software.

Major Features include,

Automatically save PDF files to a specific folder or a specific file

Easily automate PDF creation by bypassing Save-As-PDF dialog and saving PDF files to a folder of your choice. You can also save PDF file(s) to a specific file. If the destination PDF file exists, you are allowed to overwrite, append, rename or skip the existing PDF file. The pro version makes file naming and renaming flexible with user-defined rules.

Save PDF files without prompt

Pro version allows you to save PDF files without user prompt. You would never see any Save-As-PDF-Document dialog again. Even if you are accessing your computer via Remote Desktop or Terminal Services, you can still save PDF files without prompt.

Email PDF document as email attachment

After you print your Word document, Excel spreadsheet, PowerPoint slide decks, or AutoCAD drawings to Microsoft Print to PDF printer, you can immediately email your PDF document as email attachment. Just type in the recipient's email address, and click Send Email.

Automatically Open PDF document after creation

Adobe PDF software has the advantage of automatically opening a PDF document after it is created. However, Microsoft Print to PDF does not allow you to do so. Print to PDF Toolkit Pro software makes it a possible now. Simply enable the option in Automate PDF creation dialog, and here you go.

Post-Processing for PDF documents

You have a bunch of options to manipulate your PDF documents after they are created as a result of printing to Microsoft Print to PDF printer. You are allowed to specify another software application to process the PDF documents on the background, or you can send the created PDF documents to a LaserJet or Inkjet printer. If you are designing a document processing flow, this feature makes you more convinced to process your PDF documents in the flow.

Password Protection

Adobe PDF allows you to protect your PDF document from unwanted access with a password. Microsoft Print to PDF does not offer password protection natively. Microsoft Print to PDF Toolkit enables you to password protect your PDF documents with a user password and/or an owner password.

Permission Management

Another way to protect your document from unwanted access is to disable certain permissions in your PDF document when it is created. You are empowered to allow or disallow printing PDF document, changing PDF document, content copying and extraction, authoring comments and form fields, signing and filling in form fields, content accessibility, and PDF document assembly.

Avoid Information Leakage in PDF Document Properties

Microsoft Print to PDF generates PDF document with title, subject, and author information as the meta data in the header of PDF document. Some users might not like the idea of leaving such footprints and traces in their PDF documents, as it constitutes information leakage in a sense. The Pro version software allows you to either remove such information or override the information with whatever content you prefer. Not limited to author, title, subject information, you are empowered to remove or override keywords, creator, and producer information in your PDF document.

Create PDF document with splendid page mode and layout mode

The PDF document created by Microsoft Print to PDF printer is a PDF document with the default page mode and default layout mode. There is no option in the printer that allows you to change page mode and layout mode. Do you want to create a splendid full-screen PDF document? Or a PDF document with thumbnail or outline page mode? The pro version is the key to make it happen. You can also set page layout mode, such as single page, one column, two columns left, or two columns right. The initial appearance and layout of your PDF document can be many, such as center on screen, hide or display document title, tool bar, menu bar, and other windows.

Batch Conversion

Microsoft Print to PDF does not allow you to convert other types of documents to PDF files in batch. The Pro version software allows batch conversion from the following file types to PDF,

- Microsoft Word to PDF (.DOC, .DOCX)
- Microsoft Excel to PDF (.XLS, .XLS)
- Microsoft PowerPoint to PDF (.PPT, .PPTX)
- Rich Txt Format to PDF (.RTF)
- Plain Text Format to PDF (.TXT)
- Web Pages to PDF (.HTM, .HTML, SHTML)
- Photos to PDF (.JPG, .JPEG, .PNG, .BMP)
- AutoCAD drawings to PDF (.DWG, .DXF)

The batch conversion feature replaces DOC2PDF, XLS2PDF, PPT2PDF, RTF2PDF, TXT2PDF, HTM2PDF, HTML2PDF, DWG2PDF and DXF2PDF tools to increase your work efficiency.

Add More Paper Sizes and Custom Paper Size

Do you want to add more paper sizes into your Microsoft Print to PDF printer? Are you about to define a custom paper size? The Pro version software helps you create it for Microsoft Print to PDF printer. The software comes with a huge collection of paper type library including all major paper types widely used in North America, and ISO A, ISO B, ISO C, ANSI, Arch, DIN 476, as well as JIS paper sizes.

Adjust PDF resolution and PDF Print Quality

Image is an important part of PDF document. Image quality is measured by image resolution in DPI (dots per inch), and it greatly affects PDF print quality. The default image resolution in Microsoft PDF to PDF printer is 600 x 600 dpi. However, this repair tool allows you to upgrade or downgrade the resolution.

Backup and Restore Settings

Microsoft does not offer you an option to back up and restore the settings of Microsoft Print to PDF printer. This repair tool enables you to do so easily. No prior knowledge is required. Simply tell the tool where you want to save the settings, and where to restore the settings from.

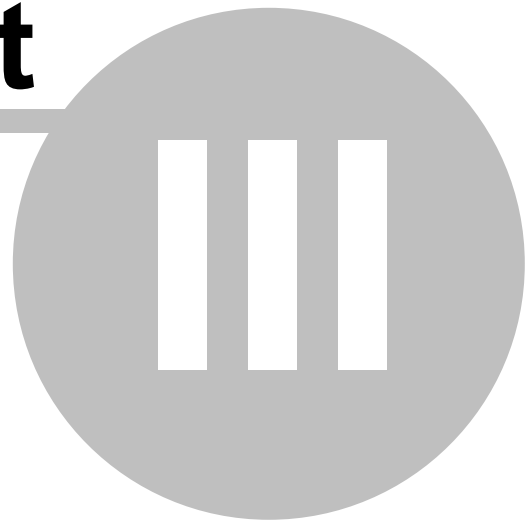
Repair and Troubleshooting

When Microsoft Print to PDF printer does not work properly, simply reinstall the printer with the Toolkit Pro version software. You may also clear print queue or view print jobs with a click of your mouse button. Shortcuts to printer folder, printer properties, and printing preferences are available. You can also set Microsoft Print to PDF printer as your system default printer with a click. If you do not feel like Microsoft Print to PDF, you can removing it completely by clicking Uninstall button.

Top Level Intro

This page is printed before a new
top-level chapter starts

Part



3 Automatic Save and Open

Microsoft Print to PDF does not support PDF auto save (automatically save PDF files to a folder or a specific file). Now Wondersoft brings you Print to PDF Toolkit Pro software that greatly enhances the features of Microsoft Print to PDF in many different ways in this regard. Print to PDF Toolkit Pro allows you to easily automate PDF creation by bypassing Save-As-PDF dialog and saving PDF files to a folder of your choice. You can also save PDF file(s) to a specific file. If the destination PDF file exists, you are allowed to overwrite, append, rename or skip the existing PDF file. The pro version makes file naming and renaming flexible with user-defined rules.

You can also automatically open PDF files after they are created.

Important Note: Please do not close Print to PDF Toolkit Pro software if you have chosen any option other than 'Show Save-As-PDF file dialog' in 'Automatic Save'. The feature needs Print to PDF Toolkit Pro software to be active. You can minimize Print to PDF Toolkit Pro software to Windows System Tray (The minimize operation is not allowed in the registered version of Print to PDF Toolkit Pro software).

Automate PDF creation

Automatic Save

- ☐ Automatically save PDF files to a folder:
C:\PDF\ ...
- ☐ Automatically save PDF file to a file:
C:\PDFCache\output.pdf ...
- ☐ Email PDF file as email attachment
- ☒ Show Save-As-PDF file dialog

Automatic Open/Email/Print

- ☐ No action after PDF file is created
- ☒ Automatically open and view PDF file after creation
- ☐ Launch an application to process PDF files
Application: C:\Program Files (x86)\Google\Chrome\Applicat...
Parameter: [PDFFile]
- ☐ Print PDF files to: Amyuni Document Converter 600

Duplicate Files

- ☐ Overwrite
- ☐ Skip
- ☒ Append
- ☐ Rename with Subfix
%i

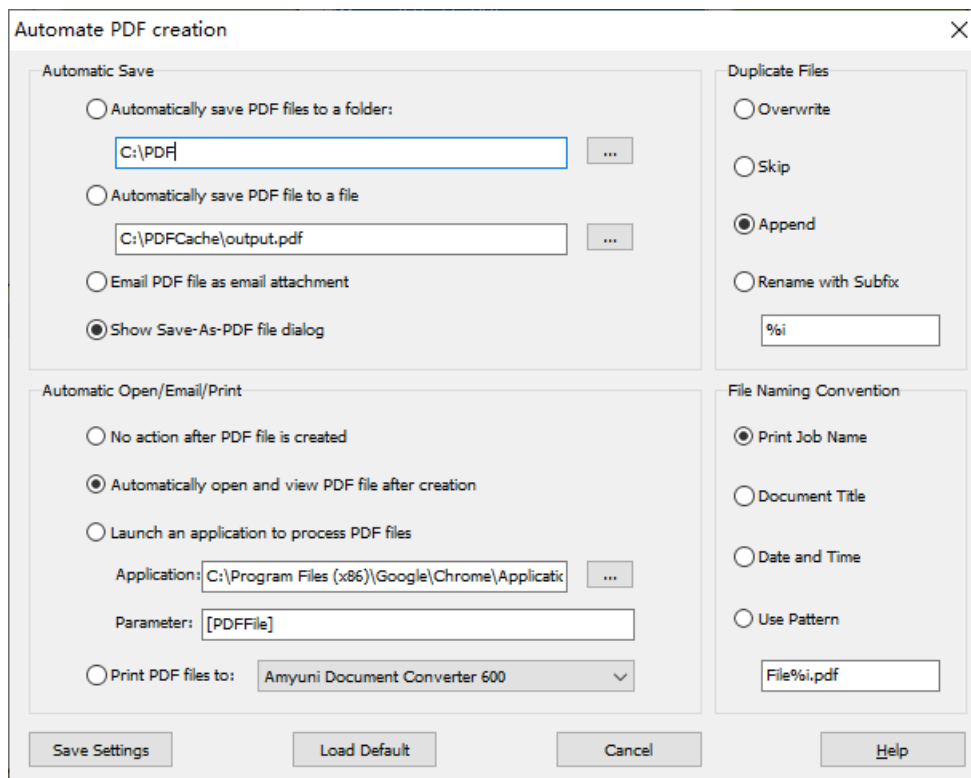
File Naming Convention

- ☒ Print Job Name
- ☐ Document Title
- ☐ Date and Time
- ☐ Use Pattern
File%i.pdf

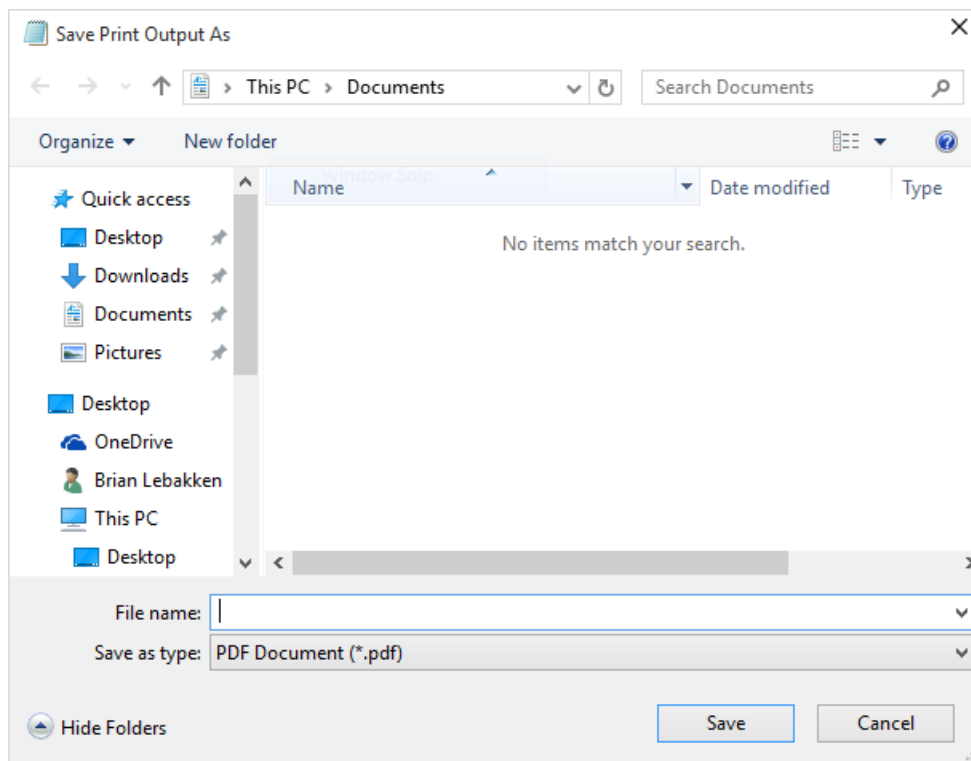
Save Settings Load Default Cancel Help

3.1 Show Save-As-PDF Dialog

The option 'Show Save-As-PDF file dialog' is in Automatic Save.



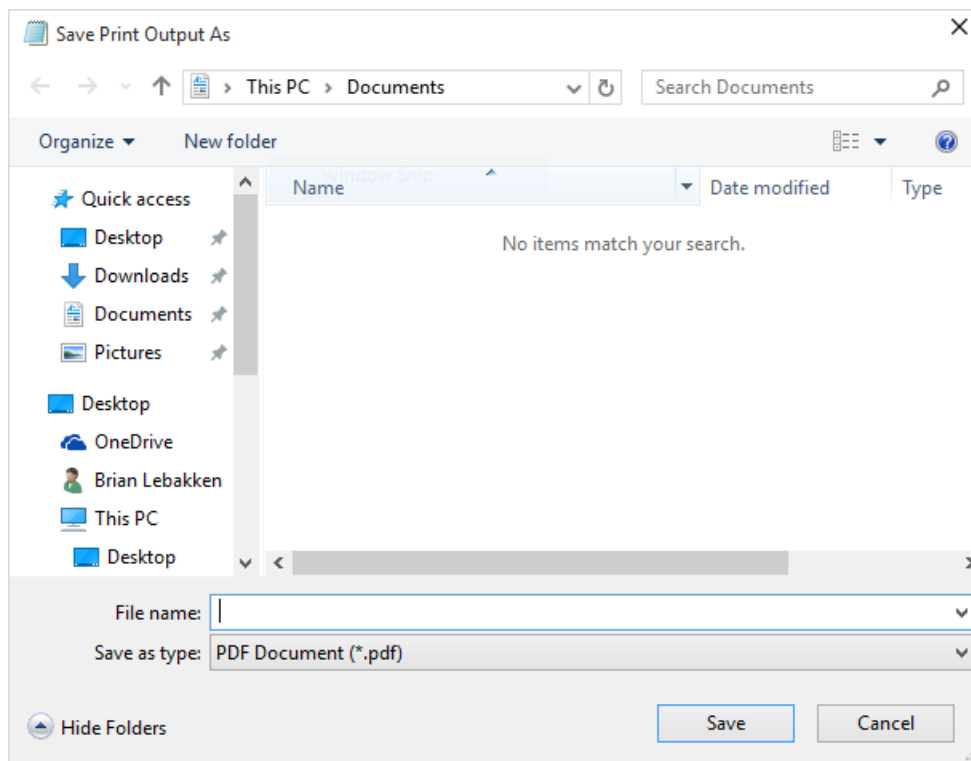
This is the default behavior of Microsoft Print to PDF printer. Even without Print to PDF Toolkit Pro software, you can get the Save-As-PDF file dialog box (the dialog box is illustrated by the picture above, and its title is Save Print Output As) that prompts you to specify the location and name of the target PDF document.



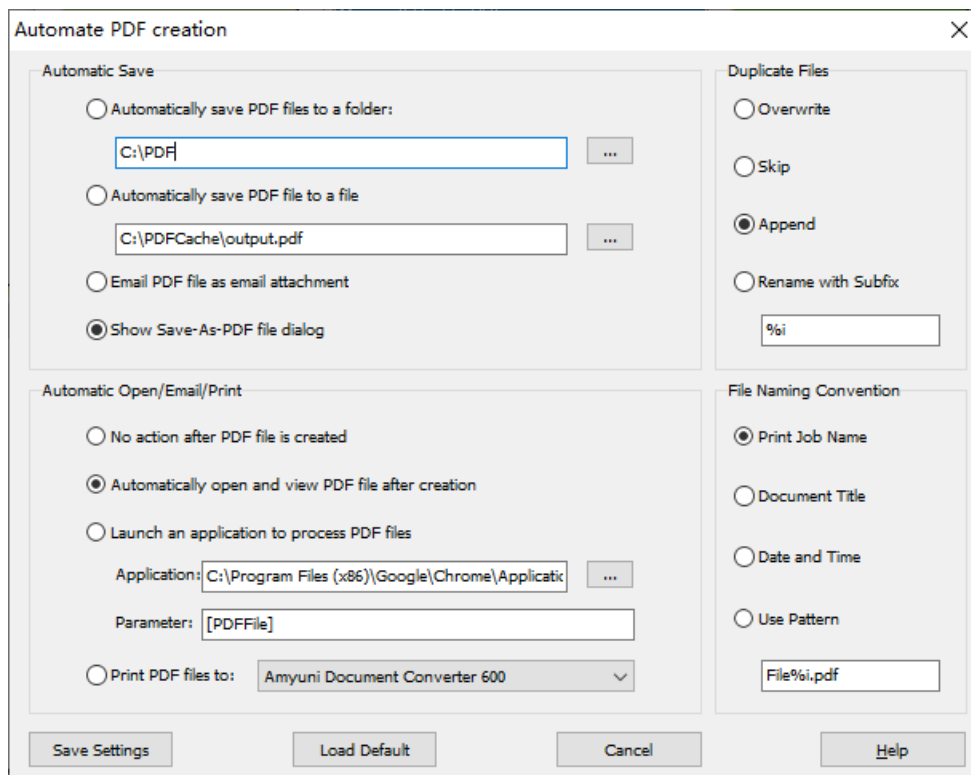
3.2 Bypass Save-As-PDF Dialog

What is Save-As-PDF Dialog?

After you print your document to Microsoft Print to PDF, you would see the following dialog, its title is 'Save Print Output As'. Usually, it's named Save-As-PDF dialog. The purpose of the dialog is to prompt user to tell Microsoft Print to PDF software where to save the PDF file.



There are many ways to bypass this dialog. You can select any option other than 'Show Save-As-PDF file dialog' in Automatic Save.



Prompt is short for user prompt, which is the Save-As-PDF dialog box (the dialog box comes with the title Save Print Output As on the latest release of Microsoft Windows 10) illustrated by the above picture. The Pro version allows you to save PDF files without user prompt, and it is also named Automatic Save.

Four options are available,

- Automatically save PDF files to a folder - All documents sent to Microsoft Print to PDF printer are converted into PDF files and saved to the folder of your choice. The default folder is C:\PDF. The name of the PDF files are determined by File Naming Convention (read the File Naming Convention section for more detail).
- Automatically save PDF file to a file - All documents sent to Microsoft Print to PDF printer would be saved to a target file. If you have multiple documents sent to Microsoft print to PDF printer one by one, the target file would be overwritten or appended or renamed or skipped again and again. The strategy for handling existing files in the target folder is determined by the option chosen in Duplicate Files (read the Duplicate Files section for more information).
- Email PDF document as email attachment - After you print your document to Microsoft Print to PDF printer, you get a PDF file, and this file would be attached to a newly composed email message.
- Show Save-As-PDF file dialog - This is the default behavior of Microsoft Print to PDF printer. Even without Print to PDF Toolkit Pro software, you can get the Save-As-PDF file dialog box (the dialog box is illustrated by the picture above, and its title is Save Print Output As) that prompts you to specify the location and name of the target PDF document.

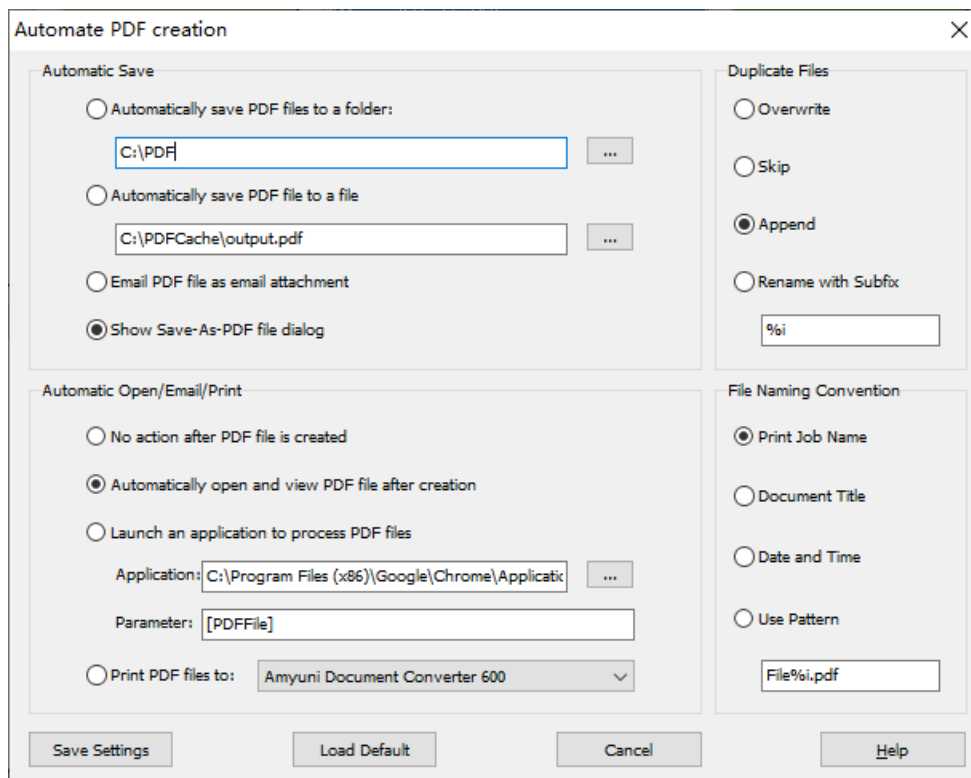
3.3 Destination Folder

After you enable the 'Automatically save PDF files to a folder' option, all documents sent to Microsoft Print to PDF printer are converted into PDF files and saved to the folder of your choice. The default folder is C:\PDF. The name of the PDF files are determined by File Naming Convention (read the File Naming Convention section for more detail).

If the folder does not exist, Print to PDF Toolkit Pro creates the folder for you.

The strategy for handling existing files in the target folder is determined by the option chosen in Duplicate Files (read the [Duplicate Files](#) section for more information).

Please be aware of the folder write access permission issue. Before you specify a folder here, make sure that the folder is accessible by Print to PDF Toolkit Pro software. An easy way to do so is to set the folder to be accessible by 'Everyone'.



Network folder is also supported.

3.4 Destination File

After you enable the 'Automatically save PDF file to a file' option, all documents sent to Microsoft Print to PDF printer would be saved to a target file. If you have multiple documents sent to Microsoft print to PDF printer one by one, the target file would be overwritten or appended or renamed or skipped again and again. The strategy for handling existing files in the target folder is determined by the option chosen in Duplicate Files (read the [Duplicate Files](#) section for more information).

The target file is not immediately created. It is created after you print your document to Microsoft Print to PDF printer.

Please be aware of the folder write access permission issue. Before you specify a target file here, make sure that the folder containing the file is accessible by Print to PDF Toolkit Pro software. An easy way to do so is to set the folder to be accessible by 'Everyone'.

For example, you specify C:\PDFCache\output.pdf as the target file, please make sure that C:\PDFCache is accessible. Otherwise, the output.pdf file would not be created.

3.5 Duplicate Files

Four options are available in Duplicate Files,

- Overwrite
- Skip
- Append
- Rename with Suffix

Overwrite - Whenever Microsoft Print to PDF printer notices that your target PDF file already exists, it would ask you to confirm whether to overwrite the target file, if what you choose in Automatic Save is Show Save-As-PDF file dialog. Otherwise, Microsoft Print to PDF printer overwrites the target PDF file without any user prompt (i.e. without showing any information. No confirmation dialog appears. No warning message).

Skip - If the target PDF file exists, Microsoft Print to PDF printer takes no action. It just keeps silent.

Append - Append is a term similar to merge, however, it means combing the newly-created PDF file to the end of an existing PDF file. If the target PDF file exists, no matter which option you choose in Automatic Save, the target PDF file would not be overwritten, instead, the content of your newly-created PDF file would be appended to the target PDF file. Even Save-As-PDF file dialog is chosen in Automatic Save, you would not be asked to confirm whether to overwrite the target PDF file or not, the new content would be merged into the target PDF file at the very end.

Rename with Suffix - If the target PDF file exists, Microsoft Print to PDF printer keeps the target PDF file, and create another PDF file alongside in the same folder of the target PDF file, however, with a different file name. For example, if the target PDF file is named MyWork.pdf, and your new PDF file would be named as MyWork1.pdf, as long as you specify '%i' as the suffix. %i stands for an Integer value. More options for suffix are available in [SDK](#).

Automate PDF creation

Automatic Save

☐ Automatically save PDF files to a folder:
C:\PDF

☐ Automatically save PDF file to a file:
C:\PDFCache\output.pdf

☐ Email PDF file as email attachment

☒ Show Save-As-PDF file dialog

Automatic Open/Email/Print

☐ No action after PDF file is created

☒ Automatically open and view PDF file after creation

☐ Launch an application to process PDF files
Application: C:\Program Files (x86)\Google\Chrome\Applicat...
Parameter: [PDFFile]

☐ Print PDF files to: Amyuni Document Converter 600

Duplicate Files

☐ Overwrite

☐ Skip

☒ Append

☐ Rename with Subfix
%i

File Naming Convention

☒ Print Job Name

☐ Document Title

☐ Date and Time

☐ Use Pattern
File%i.pdf

Save Settings Load Default Cancel Help

3.6 File Naming Convention

Print Job Name - You make the decision how the target PDF file is named. Usually the target PDF file uses the same file name but a .PDF extension as the name of your source file. For example, if you print a document namely Resume.docx from Microsoft Word, your PDF file is named Resume.pdf, if you choose Print Job Name in File Naming Convention.

Document Title - The name of the target PDF file follows Document Title of your source file.

Date and Time - This is a useful option for document work flow and automation purpose. The name of the target PDF file follows the date and time the file is created. For example, if the target PDF file is created at 11:00AM on May 1, 2020, and its name is 20200501_1100.pdf.

Use Pattern - This option is for more flexibility with regard to the name of the target PDF file. %i stands for an Integer value. More options for suffix are available in [SDK](#).

Automate PDF creation

Automatic Save

- ☐ Automatically save PDF files to a folder:
C:\PDF
- ☐ Automatically save PDF file to a file:
C:\PDFCache\output.pdf
- ☐ Email PDF file as email attachment
- ☒ Show Save-As-PDF file dialog

Automatic Open/Email/Print

- ☐ No action after PDF file is created
- ☒ Automatically open and view PDF file after creation
- ☐ Launch an application to process PDF files
Application: C:\Program Files (x86)\Google\Chrome\Applicat...
Parameter: [PDFFile]
- ☐ Print PDF files to: Amyuni Document Converter 600

Duplicate Files

- ☐ Overwrite
- ☐ Skip
- ☒ Append
- ☐ Rename with Subfix
%i

File Naming Convention

- ☒ Print Job Name
- ☐ Document Title
- ☐ Date and Time
- ☐ Use Pattern
File%i.pdf

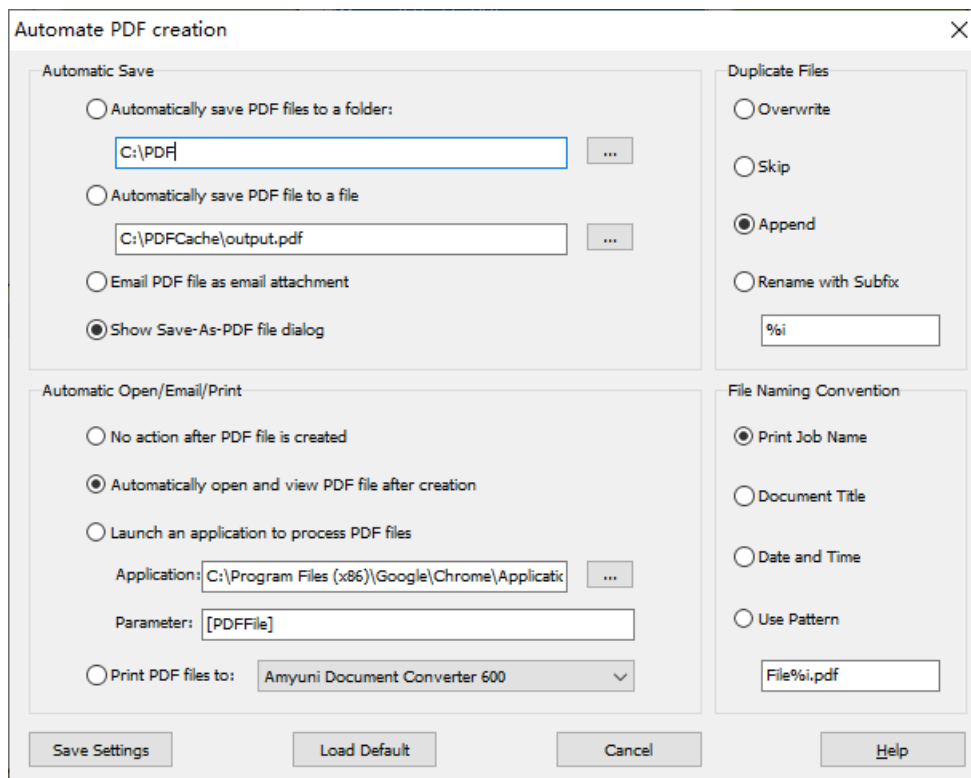
Save Settings Load Default Cancel Help

3.7 Post-Processing

There are four options available in 'Automatic Open/Email/Print' section. It is a section designed for post-processing PDF files.

If you do not want to do anything with your PDF file after it is created, simply choose this option. It is also the default option for Post-Processing.

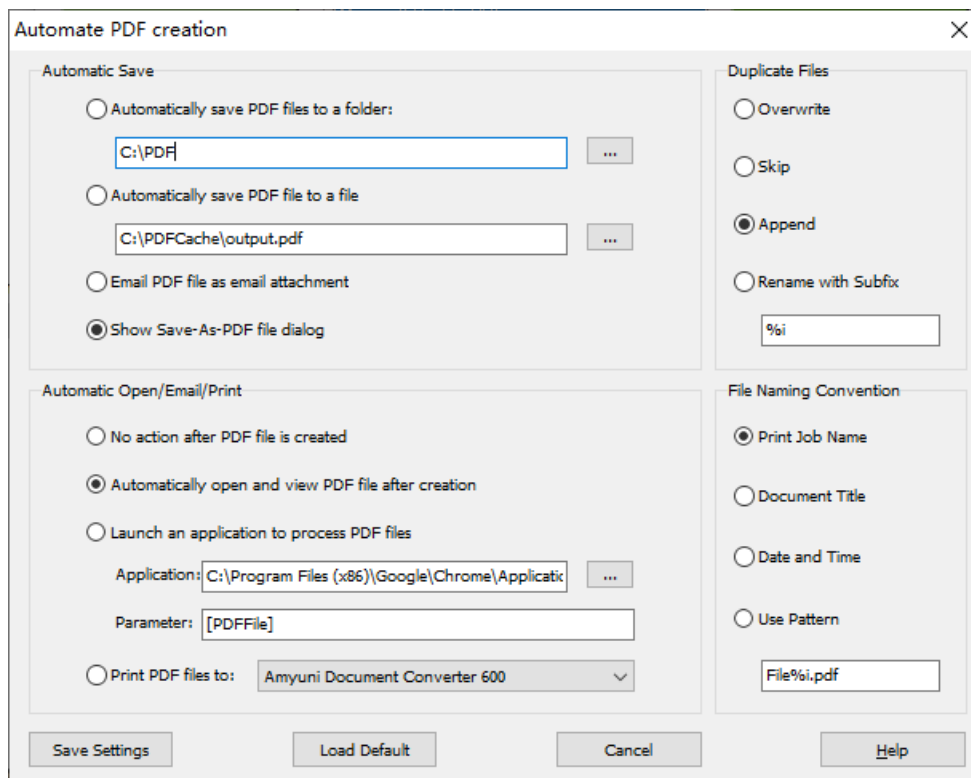
Adobe Acrobat allows opening PDF file after it is created by Adobe PDF printer. This is good for those professionals who would like to review how the PDF file looks like after creation. If you would like to get the same review, simply choose 'Automatically open and view PDF file after creation'. Your PDF file would be viewed in Microsoft Edge web browser or other software application on Windows 10 depending on which software is your default program for PDF file type. If you have installed Adobe Reader, and set it as the default program for PDF file type, your PDF file would be opened and viewed in Adobe Reader software window after the PDF file is created.



3.8 Append PDF File

A great feature in Automate PDF creation dialog box is Append.

Append is a term similar to merge, however, it means combining the newly-created PDF file to the end of an existing PDF file. If the target PDF file exists, no matter which option you choose in Automatic Save, the target PDF file would not be overwritten, instead, the content of your newly-created PDF file would be appended to the target PDF file. Even Save-As-PDF file dialog is chosen in Automatic Save, you would not be asked to confirm whether to overwrite the target PDF file or not, the new content would be merged into the target PDF file at the very end.



The 'Automate PDF creation' dialog box is divided into four main sections. The 'Automatic Save' section on the top left has four radio buttons: 'Automatically save PDF files to a folder:' (with a text box 'C:\PDF' and a browse button), 'Automatically save PDF file to a file' (with a text box 'C:\PDFCache\output.pdf' and a browse button), 'Email PDF file as email attachment', and 'Show Save-As-PDF file dialog' (which is selected). The 'Automatic Open/Email/Print' section on the bottom left has three radio buttons: 'No action after PDF file is created', 'Automatically open and view PDF file after creation' (selected), and 'Launch an application to process PDF files' (with 'Application:' text box 'C:\Program Files (x86)\Google\Chrome\Applicati...' and 'Parameter:' text box '[PDFFile]'); and a 'Print PDF files to:' dropdown menu showing 'Amyuni Document Converter 600'. The 'Duplicate Files' section on the top right has three radio buttons: 'Overwrite', 'Skip', and 'Append' (selected), plus a 'Rename with Subfix' option with a text box containing '%i'. The 'File Naming Convention' section on the bottom right has four radio buttons: 'Print Job Name' (selected), 'Document Title', 'Date and Time', and 'Use Pattern', with a text box below showing 'File%i.pdf'. At the bottom are four buttons: 'Save Settings', 'Load Default', 'Cancel', and 'Help'.

3.9 Email PDF

For those users who wish to print and email PDF to increase work efficiency, Print to PDF Toolkit Pro helps them make it a reality now.

The option 'Email PDF document as email attachment' allows you to print your document to Microsoft Print to PDF printer and immediately you get the PDF file as an attachment in a newly-composed email message.

Almost all email clients are supported by Print to PDF Toolkit Pro software, including but not limited to Microsoft Outlook, Microsoft Live Mail, and IBM Lotus Notes.

Automate PDF creation

Automatic Save

☐ Automatically save PDF files to a folder:
C:\PDF

☐ Automatically save PDF file to a file
C:\PDFCache\output.pdf

☐ Email PDF file as email attachment

☒ Show Save-As-PDF file dialog

Automatic Open/Email/Print

☐ No action after PDF file is created

☒ Automatically open and view PDF file after creation

☐ Launch an application to process PDF files
Application: C:\Program Files (x86)\Google\Chrome\Applicat
Parameter: [PDFFile]

☐ Print PDF files to: Amyuni Document Converter 600

Duplicate Files

☐ Overwrite

☐ Skip

☒ Append

☐ Rename with Subfix
%i

File Naming Convention

☒ Print Job Name

☐ Document Title

☐ Date and Time

☐ Use Pattern
File%i.pdf

Save Settings Load Default Cancel Help

3.10 Print PDF

Some users have the ask for printing their document to a LaserJet or Inkjet printer while keeping a copy of the document in PDF. Therefore, the 'Print PDF files to a printer' option is provided in 'Automatic Open/Email/Print' section. At the mean time, you need to specify 'Automatically save PDF files to a folder' in 'Automatic Save'.

Automate PDF creation

Automatic Save

☐ Automatically save PDF files to a folder:
C:\PDF\ ...

☐ Automatically save PDF file to a file:
C:\PDFCache\output.pdf ...

☐ Email PDF file as email attachment

☒ Show Save-As-PDF file dialog

Automatic Open/Email/Print

☐ No action after PDF file is created

☒ Automatically open and view PDF file after creation

☐ Launch an application to process PDF files
Application: C:\Program Files (x86)\Google\Chrome\Applicat...
Parameter: [PDFFile]

☐ Print PDF files to: Amyuni Document Converter 600 v

Duplicate Files

☐ Overwrite

☐ Skip

☒ Append
%i

☐ Rename with Subfix

File Naming Convention

☒ Print Job Name

☐ Document Title

☐ Date and Time

☐ Use Pattern
File%i.pdf

Save Settings Load Default Cancel Help

Top Level Intro

This page is printed before a new
top-level chapter starts

Part



IV

4 Encryption

Encryption features in Print to PDF Toolkit Pro software for Microsoft Print to PDF include,

- Protect PDF document with password
- Restrict user access by granting permissions in PDF document

4.1 Password Protection

Password Protection for PDF document

To secure your PDF document, it is suggested to set a user password and an owner password. The creator of the PDF document owns the owner password. The user password is intended for those who open and view PDF files.

For example, if you create a PDF document with a user password and an owner password, and distribute it to your readers. For security reason, you tell your readers the password either by phone or by email. As soon as the readers open your PDF document, they are prompted to enter the user password before they could read the PDF document.

If you would like to modify your PDF document, you are asked to enter your owner password before you make any changes to the PDF document. To edit PDF document, you are requested to enter the owner password.

Your PDF document is encrypted after you apply either user password or owner password.

Password Protection for PDF document

Document Permission

- ☒ Allow Printing Low resolution
- ☐ Allow Changing document
- ☐ Allow Content copying and extraction
- ☒ Allow Authoring comments and form fields
- ☒ Allow Signing and filling in form fields
- ☒ Allow Content accessibility
- ☐ Allow Document assembly

Password Protection

User Password:

Owner Password:

Utility

PDF Encryption Level: 256-bit AES encryption

Save Settings Restore Default Cancel

Standalone Utility for PDF Encryption and Decryption

If you click the Utility button, Print to PDF Toolkit Pro launches a standalone utility namely **PDF Encrypt & Decrypt**. Even if you do not have a license for Print to PDF Toolkit Pro software, you can still use **PDF Encrypt & Decrypt** utility. The utility needs a separate license.

4.2 Permission Management

Permission Management

You are allowed to restrict your readers from accessing your PDF document. For instance, your reader might want to edit PDF document, however, you do not want the reader to edit PDF document.

Several permission options are available. You can restrict all of them or part of them. The options include,

- Allow or disallow printing in low or high resolution
- Allow or disallow changing document (this is equivalent to allow/disallow edit PDF document)
- Allow or disallow content copying and extraction
- Allow or disallow authoring comments and form fields
- Allow or disallow signing and filling in form fields
- Allow or disallow content accessibility
- Allow or disallow document assembly (None of append, merge/combine, split operations is allowed/disallowed)

Password Protection for PDF document

Document Permission

- ☒ Allow Printing Low resolution
- ☐ Allow Changing document
- ☐ Allow Content copying and extraction
- ☒ Allow Authoring comments and form fields
- ☒ Allow Signing and filling in form fields
- ☒ Allow Content accessibility
- ☐ Allow Document assembly

Password Protection

User Password:

Owner Password:

Utility

PDF Encryption Level: 256-bit AES encryption

Save Settings Restore Default Cancel

Standalone Utility for PDF Encryption and Decryption

If you click the Utility button, Print to PDF Toolkit Pro launches a standalone utility namely **PDF Encrypt & Decrypt**. Even if you do not have a license for Print to PDF Toolkit Pro software, you can still use

PDF Encrypt & Decrypt utility. The utility needs a separate license.

4.3 Encryption Algorithm

Several encryption algorithms are provided,

- 40-bit RC4 encryption
- 128-bit RC4 encryption
- 128-bit AES encryption
- 256-bit AES encryption

256-bit encryption algorithm is stronger than 128-bit one. 128-bit encryption algorithm is stronger than 40-bit one. It is highly suggested to use 128-bit AES encryption algorithm for general purpose, and 256-bit AES encryption algorithm for high-confidential documents.

Top Level Intro

This page is printed before a new
top-level chapter starts

Part

A large, light gray circle containing a white, bold, sans-serif capital letter 'V' in the center.

5 Security

Document Security is crucial to a company's information security.

5.1 PDF Document Properties

Every PDF document comes with meta data, which represents information that is native to the PDF document. Meta data includes a summary of the PDF document, including author, title, subject, keywords, creator, and producer.

Producer refers to the software that a PDF document is created with. Microsoft Print to PDF is the producer of the PDF document. Creator is the name of the person who creates the PDF document. In the following example, the creator is Human Resource Department, and the producer is Microsoft Print to PDF software.

The screenshot shows a dialog box titled "PDF Document Summary and Appearance" with a close button (X) in the top right corner. The dialog is divided into two main sections. The top section, "PDF Document Summary", contains six rows, each with a label, a checkbox for "Override", and a text input field. The rows are: Author (checked, "Wondersoft Corporation"), Title (checked, "New Employee Orientation"), Subject (checked, "Human Resource Management"), Keywords (checked, "NEO,new,employee,orientation,onboard,HR"), Creator (checked, "Human Resource Department"), and Producer (unchecked, "Microsoft Print to PDF"). The bottom section, "PDF Document Initial Appearance", contains two columns of checkboxes. The left column has "Hide Toolbar" (unchecked), "Hide Menubar" (unchecked), and "Center Window" (checked). The right column has "Display Document Title" (unchecked), "Hide Window on Startup" (unchecked), and "Hide Window User Interface" (checked). At the bottom of the dialog are four buttons: "Save Settings", "Cancel", "Restore Default", and "Standalone Utility".

5.2 Avoid Information Leakage

A PDF document contains the information of author, title, subject, creator, and producer after it is created with Microsoft Print to PDF. For example, if a Windows user prints a document from Microsoft Word to Microsoft Print to PDF printer, he or she gets a PDF document as a result of the printing. The PDF document might contain sensitive information, the user does not want others know who is the creator of the PDF document. In large companies, the user name of Windows domain account becomes the author in the PDF document properties. This can be dangerous to the company's information security, as it is a severe information leakage.

How to remove the author information? You can simply check the Override option in the PDF Document Properties dialog, and put nothing in the text box immediately after Override. In this way the author property of your PDF document is overridden by an empty string. This makes the author information completely removed from the PDF document.

PDF Document Summary and Appearance

PDF Document Summary

Author	<input checked="" type="checkbox"/> Override	Wondersoft Corporation
Title	<input checked="" type="checkbox"/> Override	New Employee Orientation
Subject	<input checked="" type="checkbox"/> Override	Human Resource Management
Keywords	<input checked="" type="checkbox"/> Override	NEO,new,employee,orientation,onboard,HR
Creator	<input checked="" type="checkbox"/> Override	Human Resource Department
Producer	<input type="checkbox"/> Override	Microsoft Print to PDF

Page Mode: FullScreen Page Layout: Single Page

PDF Document Initial Appearance

<input type="checkbox"/> Hide Toolbar	<input type="checkbox"/> Display Document Title
<input type="checkbox"/> Hide Menubar	<input type="checkbox"/> Hide Window on Startup
<input checked="" type="checkbox"/> Center Window	<input checked="" type="checkbox"/> Hide Window User Interface

Save Settings Cancel Restore Default Standalone Utility

Top Level Intro

This page is printed before a new
top-level chapter starts

Part

A large, light gray circle containing the Roman numeral 'VI' in white, bold, sans-serif font. The circle is positioned to the right of the 'Part' header and the horizontal line.

6 Appearance

Before you publish a PDF document, it is suggested to make the right appearance to impress your audiences. Right page mode, page layout, and initial appearance settings.

PDF Document Summary and Appearance

PDF Document Summary

Author	<input checked="" type="checkbox"/> Override	Wondersoft Corporation
Title	<input checked="" type="checkbox"/> Override	New Employee Orientation
Subject	<input checked="" type="checkbox"/> Override	Human Resource Management
Keywords	<input checked="" type="checkbox"/> Override	NEO,new,employee,orientation,onboard,HR
Creator	<input checked="" type="checkbox"/> Override	Human Resource Department
Producer	<input type="checkbox"/> Override	Microsoft Print to PDF

Page Mode: **FullScreen** Page Layout: **Single Page**

PDF Document Initial Appearance

<input type="checkbox"/> Hide Toolbar	<input type="checkbox"/> Display Document Title
<input type="checkbox"/> Hide Menubar	<input type="checkbox"/> Hide Window on Startup
<input checked="" type="checkbox"/> Center Window	<input checked="" type="checkbox"/> Hide Window User Interface

Buttons: Save Settings, Cancel, Restore Default, Standalone Utility

6.1 PDF Page Mode

Four page modes in the drop down list of Page Mode are supported by PDF,

- Normal - The default page mode for PDF document created with Microsoft Print to PDF
- Outline - Outline view mode
- Thumbnail - All PDF pages are presented as thumbnail until you zoom in.
- Full Screen - Show PDF document in full screen just like you start a PowerPoint slide deck in full-screen presentation mode.

PDF Document Summary and Appearance

PDF Document Summary

Author ☒ Override Wondersoft Corporation

Title ☒ Override New Employee Orientation

Subject ☒ Override Human Resource Management

Keywords ☒ Override NEO,new,employee,orientation,onboard,HR

Creator ☒ Override Human Resource Department

Producer ☐ Override Microsoft Print to PDF

Page Mode FullScreen Page Layout Single Page

PDF Document Initial Appearance

☐ Hide Toolbar ☐ Display Document Title

☐ Hide Menubar ☐ Hide Window on Startup

☒ Center Window ☒ Hide Window User Interface

Save Settings Cancel Restore Default Standalone Utility

6.2 PDF Layout Mode

Four PDF layout styles in the drop down list of Page Layout are supported by PDF,

- Single Page - Show PDF pages in single page layout
- One Column - Show PDF pages in just one column
- Two Column Left - Show PDF pages in two column left
- Two Column Right - Show PDF pages in two column right

PDF Document Summary and Appearance

PDF Document Summary

Author ☒ Override Wondersoft Corporation

Title ☒ Override New Employee Orientation

Subject ☒ Override Human Resource Management

Keywords ☒ Override NEO,new,employee,orientation,onboard,HR

Creator ☒ Override Human Resource Department

Producer ☐ Override Microsoft Print to PDF

Page Mode FullScreen Page Layout Single Page

PDF Document Initial Appearance

☐ Hide Toolbar ☐ Display Document Title

☐ Hide Menubar ☐ Hide Window on Startup

☒ Center Window ☒ Hide Window User Interface

Save Settings Cancel Restore Default Standalone Utility

6.3 PDF Document Initial Appearance

When a PDF document is opened by Adobe Reader or other PDF viewer, the initial appearance to the reader is important, if you would like to make something different.

You are allowed to hide toolbar of the PDF reader/viewer, show/hide the menubar, center/decentralize the PDF document content in the middle of the PDF reader/viewer window, display/hide document title, show/hide window on startup of the PDF reader/viewer, show/hide window user interface.

PDF Document Summary and Appearance

PDF Document Summary

Author	<input checked="" type="checkbox"/> Override	Wondersoft Corporation
Title	<input checked="" type="checkbox"/> Override	New Employee Orientation
Subject	<input checked="" type="checkbox"/> Override	Human Resource Management
Keywords	<input checked="" type="checkbox"/> Override	NEO,new,employee,orientation,onboard,HR
Creator	<input checked="" type="checkbox"/> Override	Human Resource Department
Producer	<input type="checkbox"/> Override	Microsoft Print to PDF

Page Mode: FullScreen Page Layout: Single Page

PDF Document Initial Appearance

<input type="checkbox"/> Hide Toolbar	<input type="checkbox"/> Display Document Title
<input type="checkbox"/> Hide Menubar	<input type="checkbox"/> Hide Window on Startup
<input checked="" type="checkbox"/> Center Window	<input checked="" type="checkbox"/> Hide Window User Interface

Save Settings Cancel Restore Default Standalone Utility

Top Level Intro

This page is printed before a new
top-level chapter starts

Part



VIII

7 Batch Conversion

Microsoft Print to PDF does not support batch conversion.

With Print to PDF Toolkit Pro, you can convert several types of file formats to PDF in batch.

7.1 Supported File Types

Here is a list of supported file types that can be converted to PDF in batch,

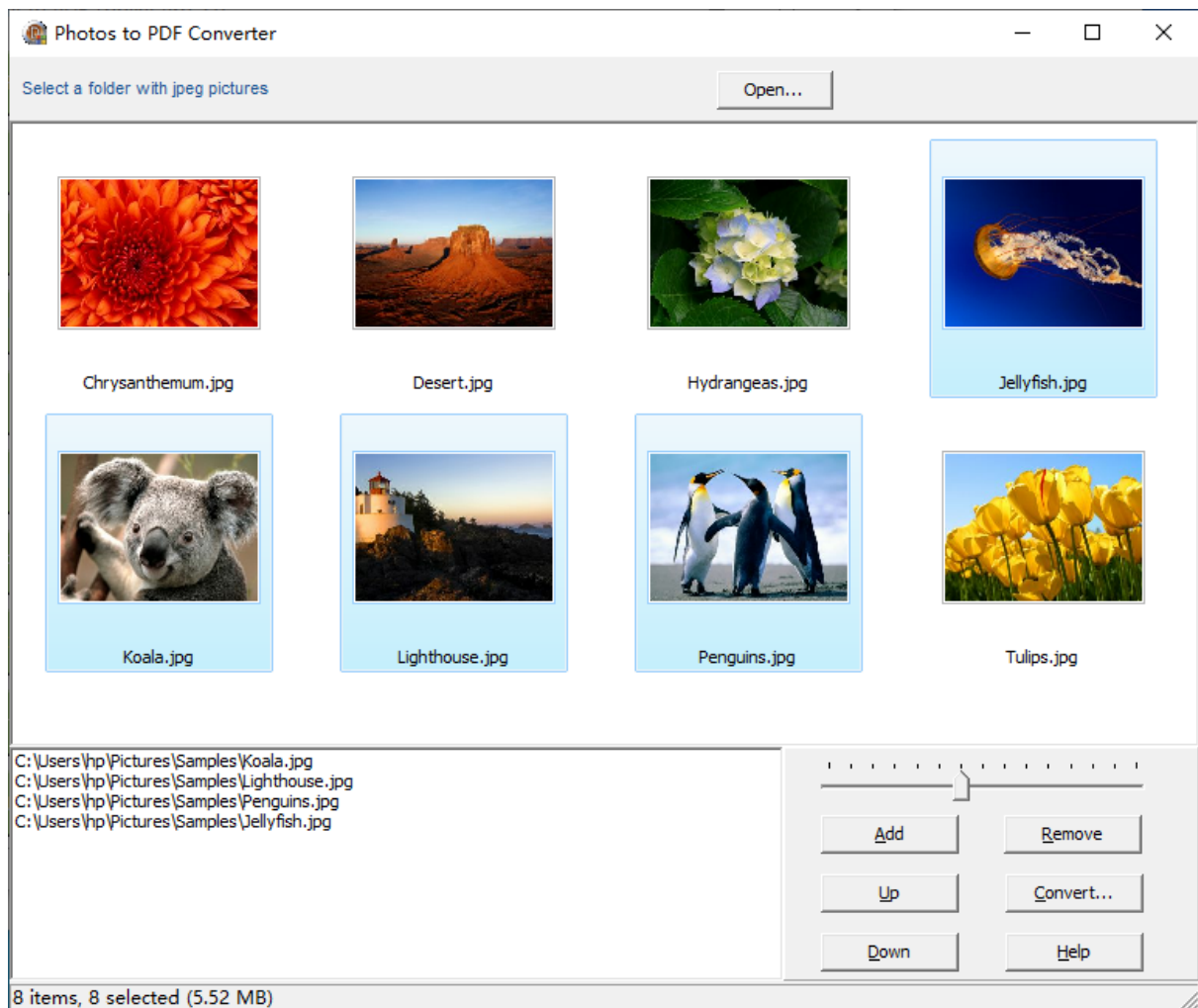
- Microsoft Word to PDF (.DOC, .DOCX)
- Microsoft Excel to PDF (.XLS, .XLS)
- Microsoft PowerPoint to PDF (.PPT, .PPTX)
- Rich Text Format to PDF (.RTF)
- Plain Text Format to PDF (.TXT)
- Web Pages to PDF (.HTM, .HTML, SHTML)
- Photos to PDF (.JPG, .JPEG, .PNG, .BMP)
- AutoCAD drawings to PDF (.DWG, .DXF)

If you are looking for more file types, feel free to contact [Wondersoft support team](#) for help.

7.2 Photos to PDF

A button namely 'Photo to PDF' is available on the main menu of Print to PDF Toolkit Pro software.

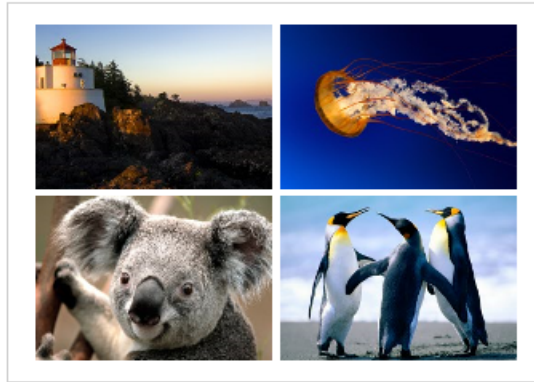
After you click the button, you would be guided by a photo to PDF conversion wizard to convert selected or all photos in a folder to PDF.



Hold down Control key on your keyboard, drag and drop photos from the top panel to the down panel. In the above example, four photos are dragged and dropped as the candidates for conversion to PDF.

Click 'Convert...' button, and select Microsoft Print to PDF as the default printer, choose paper size and resolution, and eventually select the photo layout. In the following example, the layout is 4 photos in a 2x2 matrix per page.

Microsoft Print to PDF ▾	A4 ▾	600 x 600 ▾
--------------------------	------	-------------



Click 'Print' button to continue, and you would be prompted by Save-As-PDF file dialog or you would get the output PDF file in the target folder of your choice, depending on which option you have chosen in [Automatic Save](#).

7.3 Web Page to PDF

Print to PDF Toolkit Pro software makes the conversion from a web page or a web site to a PDF file easy; simply click 'Web Page to PDF' button, you would be prompted to enter a link. The link can be a link to a web site or a web page. The supported links include links beginning with [http://](#) and [https://](#).

To batch convert web pages to PDF files, please click Batch Converter button to start the [batch conversion](#).



7.4 Efficiency

To increase the efficiency of batch conversion from other file formats to PDF, it is highly suggested to start the following software application before the conversion starts. Please also use SSD (Solid State Driver) for conversion; install your software applications, such as Microsoft Word, Excel, PowerPoint, and AutoCAD, on SSD.

If you encounter any warning message or error message in the process of conversion, please make sure that you have the correct settings in your Anti-Virus software. If you see a persistent failure in the conversion process, please disable your Anti-Virus software before the batch conversion starts, and re-enable it after the conversion completes.

Top Level Intro

This page is printed before a new
top-level chapter starts

Part



8 Paper Size

Do you want to add more paper sizes into your Microsoft Print to PDF printer? Are you about to define a custom paper size? The Pro version software helps you create it for Microsoft Print to PDF printer. The software comes with a huge collection of paper type library including all major paper types widely used in North America, and ISO A, ISO B, ISO C, ANSI, Arch, DIN 476, as well as JIS paper sizes.

8.1 Add More Paper Sizes

Print to PDF Toolkit Pro allows you to add predefined and most commonly-used paper types (paper sizes) into Microsoft Print to PDF printer. To add a predefined paper size, simply drag and drop the paper size from the right column to the left column. If you like, you can add [custom paper](#) size as well.

AR is the ratio of width to height. For example, suppose that the paper width is 216 millimeter, and paper height is 279 millimeter, and its AR is $216 / 279 = 0.77$.

You are allowed to set a default paper size, just double-click a paper size in the left column, you would see the Default Option changes to reflect your changes.

Here is a list of all the paper sizes that can be added into Microsoft Print to PDF on Windows 10,

US	ISO A, B, C	JIS, ARCH, ANSI, DIN 476
Legal 216 x 356 mm	ISO A0 841 x 1189 mm	B0 1030 x 1456 mm
Letter 216 x 279 mm	ISO A1 594 x 841 mm	B1 728 x 1030 mm
Ledger 432 x 279 mm	ISO A2 420 x 594 mm	B2 515 x 728 mm
Executive 184 x 267 mm	ISO A3 297 x 420 mm	B3 364 x 515 mm
Tabloid 279 x 432 mm	ISO A4 210 x 297 mm	B4 257 x 364 mm
Statement 140 x 216 mm	ISO A5 148 x 210 mm	B5 182 x 257 mm

11x15 279 x 381 mm	ISO A6 105 x 148 mm	B6 128 x 182 mm
11x12 279 x 305 mm	ISO A7 74 x 105 mm	B7 91 x 128 mm
10x14 254 x 356 mm	ISO A8 52 x 74 mm	B8 64 x 91 mm
10x13 254 x 330 mm	ISO A9 37 x 52 mm	B9 45 x 64 mm
10x11 254 x 279 mm	ISO A10 26 x 37 mm	B10 32 x 45 mm
8x10 203 x 254 mm		B11 22 x 32 mm
7x9 178 x 229 mm	ISO B0 1000 x 1414 mm	B12 16 x 22 mm
5x7 127 x 178 mm	ISO B1 707 x 1000 mm	
Demitab 203 x 267 mm	ISO B2 500 x 707 mm	Arch A 229 x 305 mm
Government Legal 203 x 300 mm	ISO B3 353 x 500 mm	Arch B 305 x 457 mm
Quarto 216 x 275 mm	ISO B4 250 x 353 mm	Arch C 457 x 610 mm
Oficio 216 x 340 mm	ISO B5 176 x 250 mm	Arch D 610 x 914 mm
Fanfold 279 x 378 mm	ISO B6 125 x 176 mm	Arch E 914 x 1219 mm
European Fanfold 216 x 305	ISO B7 88 x 125 mm	Arch E1 762 x 1067 mm
Foolscap Folio 216 x 330 mm	ISO B8 62 x 88 mm	Arch E2 660 x 965 mm
Letter Plus 216 x 322 mm	ISO B9 44 x 62 mm	Arch E3 686 x 991 mm
Letter Tab 229 x 279 mm	ISO B10 31 x 44 mm	Arch E 914 x 1220 mm
Letter Extra 241 x 305 mm		
Legal Extra 241 x 381 mm	C0 917 x 1297 mm	ANSI A 216 x 279 mm
Tabloid Extra 305 x 457	C1 648 x 917 mm	ANSI B 279 x 432 mm
Junior Legal 127 x 203 mm	C2 458 x 648 mm	ANSI C 432 x 559 mm
EDP 279 x 356 mm	C3 324 x 458 mm	ANSI D 559 x 864 mm
European EDP 305 x 356 mm	C4 229 x 324 mm	ANSI E 864 x 1118 mm
	C5 162 x 229 mm	
	C6 114 x 162 mm	4A0 1682 x 2378 mm
	C7 81 x 114 mm	2A0 1189 x 1682 mm
	C8 57 x 81 mm	
	C9 40 x 57 mm	
	C10 28 x 40 mm	

One limitation in the evaluation copy of Print to PDF Toolkit Pro software is that you are not allowed to drag and drop all paper sizes from the right column to the left one, unless you purchase a license and get the full version software.

Unit Accuracy allows you to specify if paper size is measured in US Standard (inch) or in International Standard (millimeter). The paper sizes shown on the user interface remains in millimeter, however, the internal logic in Print to PDF Toolkit Pro software changes to the Unit of your choice. For most paper sizes most frequently used in the US, it is suggested to use US Standard.

8.2 Define Custom Paper Size

After you click 'Add Custom Size' button, and you are allowed to define custom paper size; you decide the height and width of the new paper type. The name of your custom paper type is called 'CUSTOM_SIZE', and it appears in the left column namely 'Options for Microsoft Print to PDF'.

PDF Paper Size

Options for Microsoft Print to PDF

TABLOID
LEGAL
STATEMENT
EXECUTIVE
A3
A4
A5
B4
B5
LETTER

Available Paper Sizes

LETTER_EXTRA_TRANSVERSE
LETTER_EXTRA
LETTER_PLUS
LETTER_ROTATED
LETTER_TRANSVERSE
LETTERSMALL
LEDGER
LEGAL_EXTRA
NOTE
QUARTO
TABLOID_EXTRA
FANFOLD_LGL GERMAN

Paper Width: 216 mm Paper Height: 279 mm AR: 0.77

Default Option: LETTER Add Custom Size

Unit Accuracy

☒ US Standard ☐ International Standard

Drag & drop between left and right list. To add all available paper sizes with a click, please upgrade to Print to PDF Toolkit. Upgrade

Save Settings Restore Default Cancel

Top Level Intro

This page is printed before a new
top-level chapter starts

Part



IX

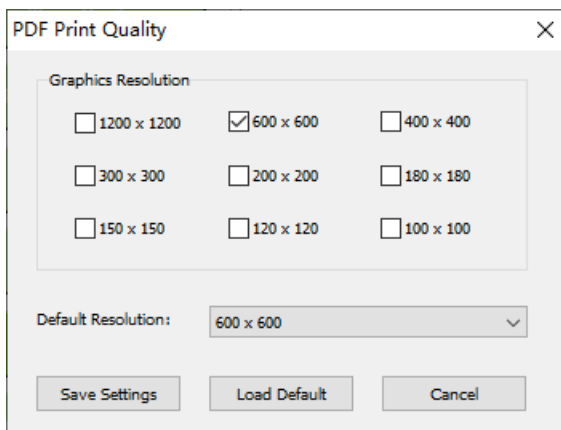
9 Print Quality

Image is an important part of PDF document. Image quality is measured by image resolution in DPI (dots per inch), and it greatly affects PDF print quality. The default image resolution in Microsoft PDF to PDF printer is 600 x 600 dpi.

9.1 Image Resolution

Microsoft Print to PDF software processes images in 600 x 600 dpi resolution to address a majority of user needs for image resolution.

With Print to PDF Toolkit Pro software, you are allowed to select one or many options for the image resolution in Microsoft Print to PDF printer.



NOTE: 1200 x 1200 dpi is not supported by all Windows 10 releases. If any incompatibility issue is found, Print to PDF Toolkit Pro gives you a warning message. To resolve the issue, it is highly suggested to upgrade your Windows 10 to the latest release.

9.2 PDF Compression

Microsoft Print to PDF does not generate the smallest PDF files by default. However, you can downgrade the image resolution settings to reduce the file size. For instance, if you reduce the image resolution from 600 x 600 dpi to 300 x 300, chances are that the size of your PDF file is reduced.

If you do not feel like to reduce the file size of PDF file while keeping the same image resolution in your PDF file, you would need other software tool to help you, such as [PDF Compress](#) software.

Top Level Intro

This page is printed before a new
top-level chapter starts

Part



X

10 Backup and Restore

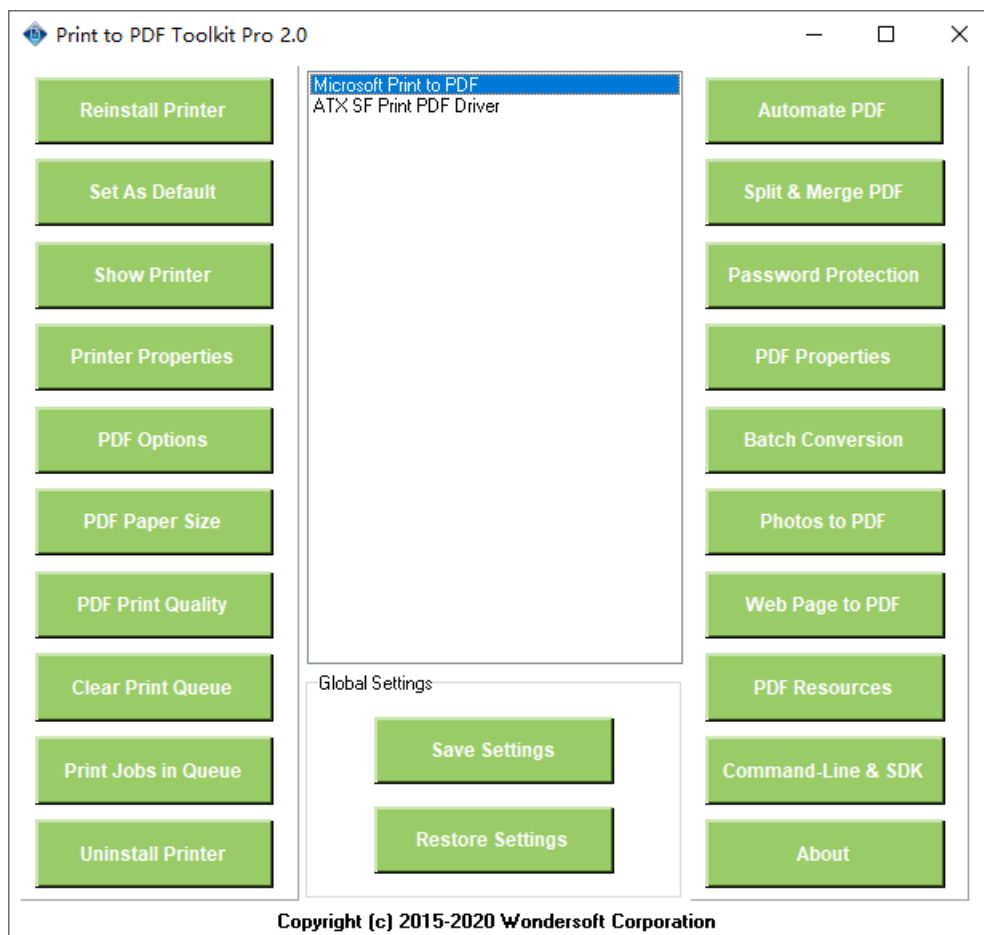
Microsoft Print to PDF printer settings can be backed up with a few mouse clicks, thanks to Print to PDF Toolkit Pro software.

Your settings in Print to PDF Toolkit Pro are automatically saved and restored. Print to PDF Toolkit Pro manages the settings.

10.1 Printer Settings

Microsoft does not offer you an option to back up and restore the settings of Microsoft Print to PDF printer. This repair tool enables you to do so easily. No prior knowledge is required. Simply tell the tool where you want to save the settings, and where to restore the settings from.

The 'Save Settings' button allows you to back up the settings of Microsoft Print to PDF with a mouse click, and the 'Restore Settings' button allows you to restore the settings with a simple click.



10.2 Print to PDF Toolkit Pro Settings

Your settings in Print to PDF Toolkit Pro software are automatically saved and restored after you exit the software and re-launch the software. No action is required.

Top Level Intro

This page is printed before a new
top-level chapter starts

Part

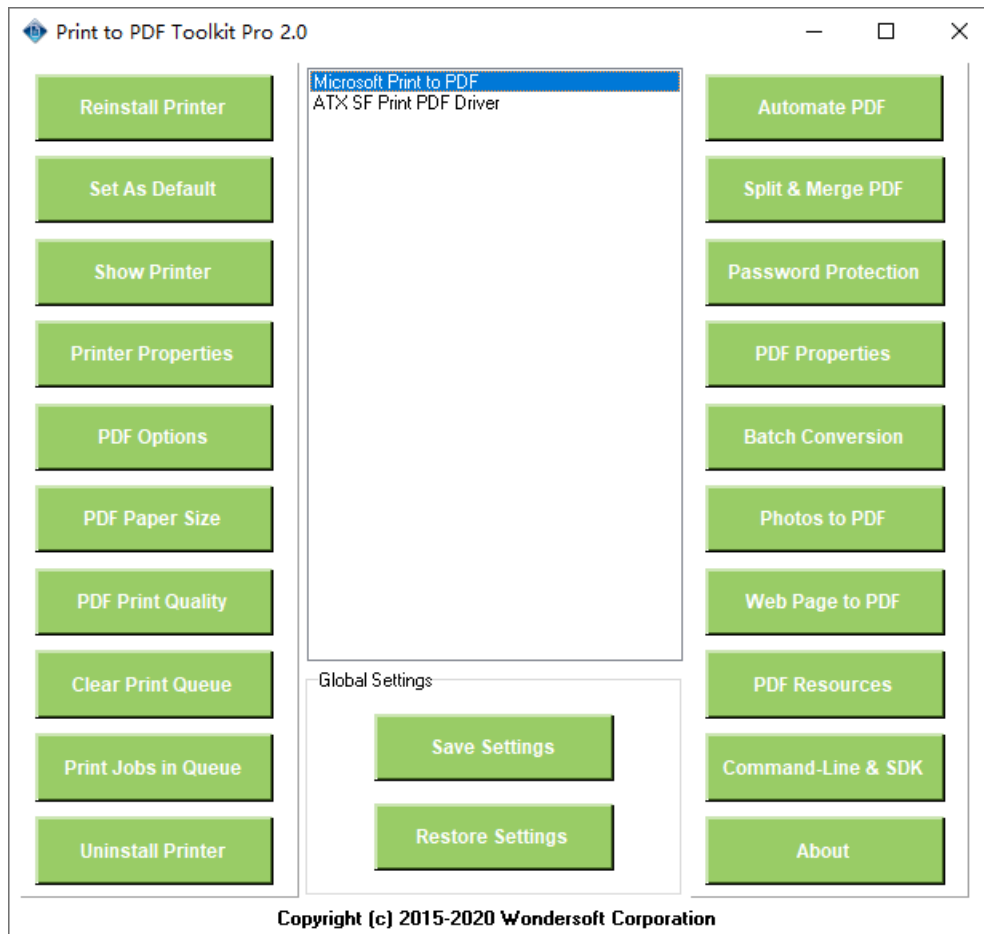


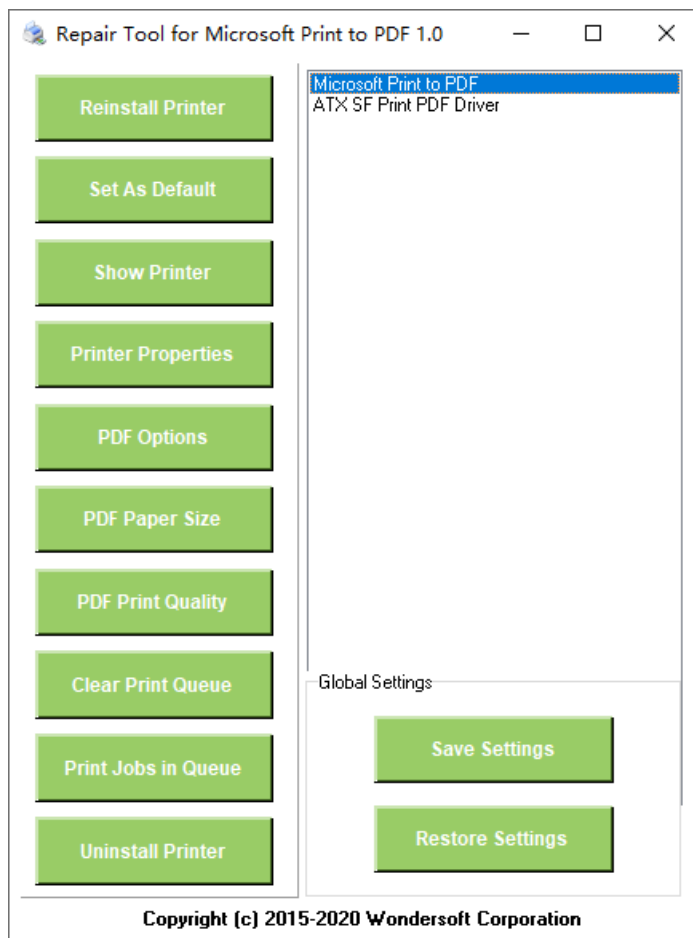
XI

11 Repair and Troubleshooting

When Microsoft Print to PDF printer does not work properly, simply reinstall the printer with the Toolkit Pro version software. You may also clear print queue or view print jobs with a click of your mouse button. Shortcuts to printer folder, printer properties, and printing preferences are available. You can also set Microsoft Print to PDF printer as your system default printer with a click. If you do not feel like Microsoft Print to PDF, you can removing it completely by clicking Uninstall button.

Both Print to PDF Toolkit Pro software and Repair Tool for Microsoft Print to PDF software allow you to troubleshoot and repair Microsoft Print to PDF printer. The former is Shareware, and the latter is Freeware.

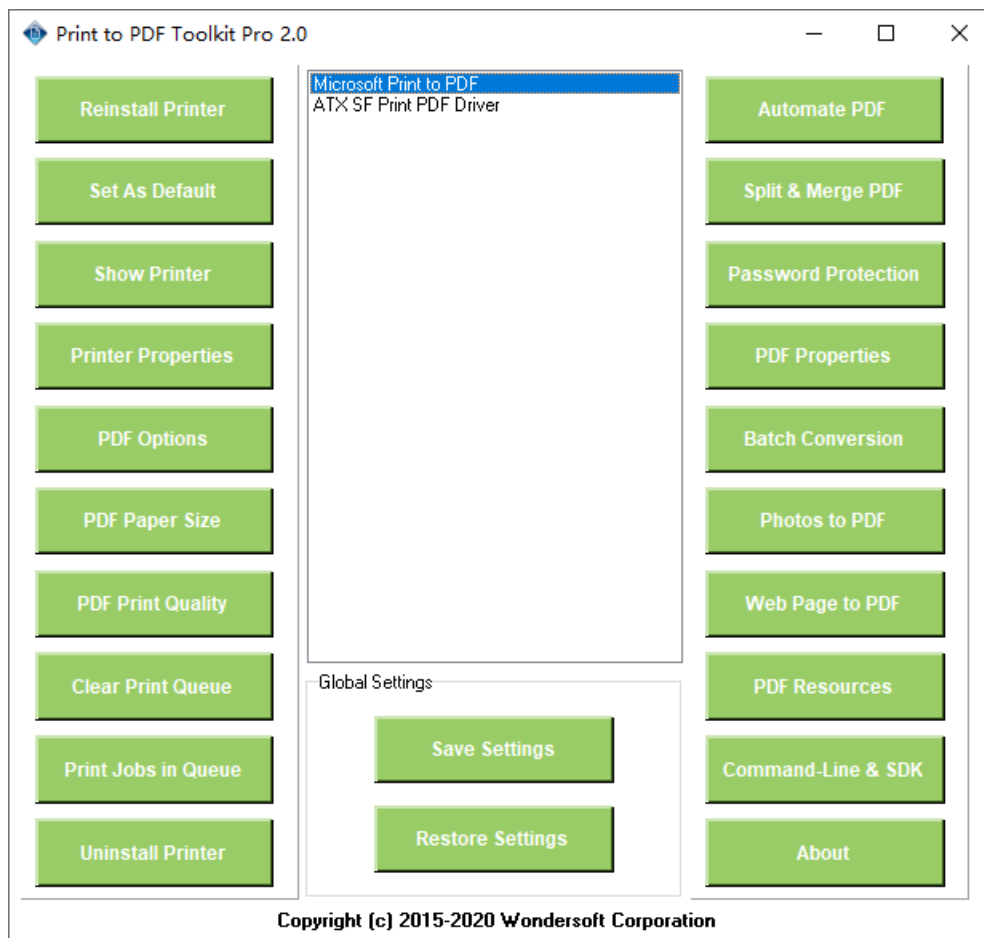




11.1 Reinstall Microsoft Print to PDF

The easiest way to repair Microsoft Print to PDF is to reinstall the printer and software package. Simply click 'Reinstall Printer', and you would get it uninstalled and reinstalled. Most of the issues with Microsoft Print to PDF printer can be fixed within 2 minutes.

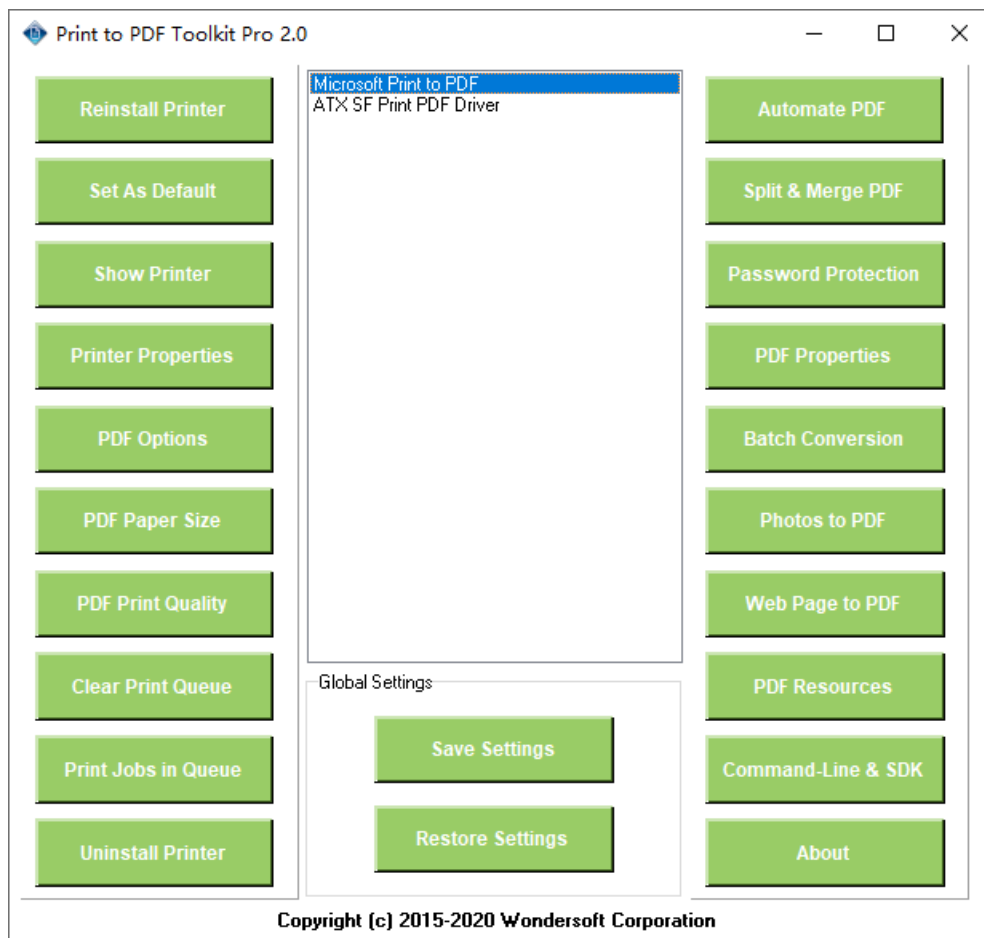
NOTE: Please do not interrupt the reinstall process.



11.2 Uninstall Microsoft Print to PDF

If you do not feel like Microsoft Print to PDF, just uninstall it by clicking 'Uninstall Printer' button.

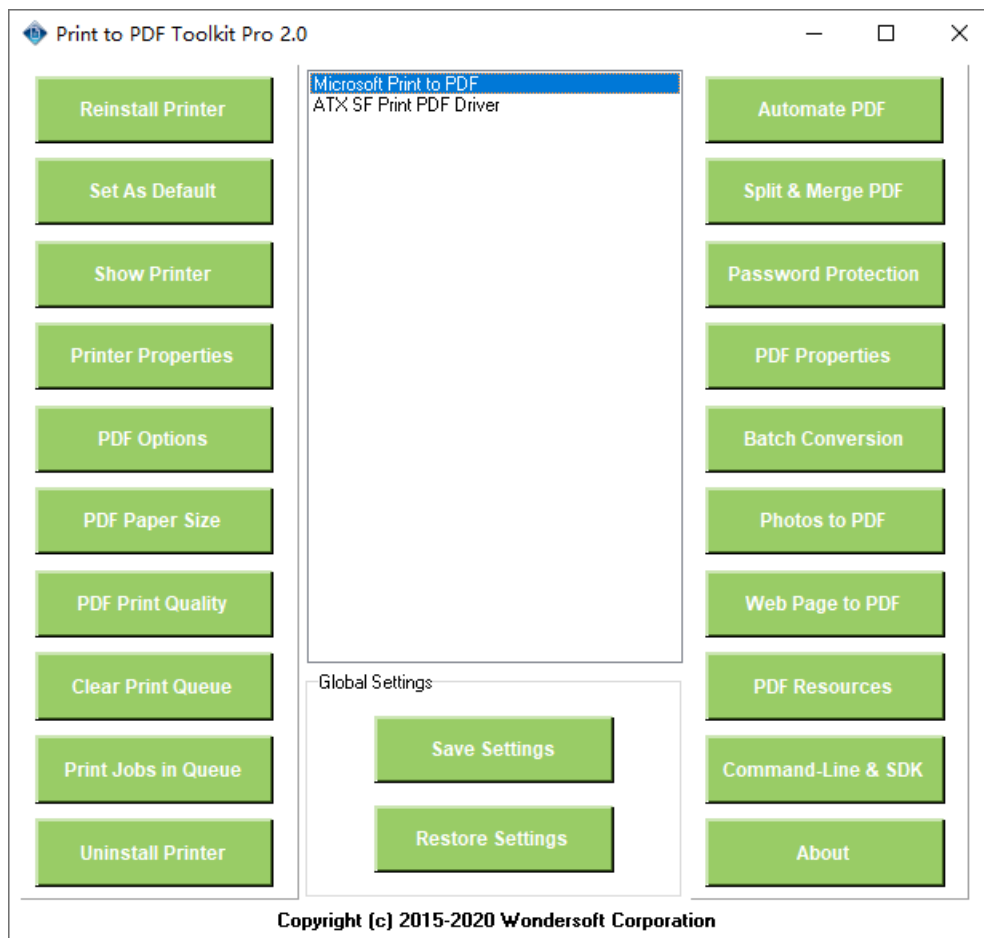
Wondersoft provides a command-line version tool to uninstall Microsoft Print to PDF. If you are interested, feel free to contact Wondersoft [support team](#) to get the command-line version tool.

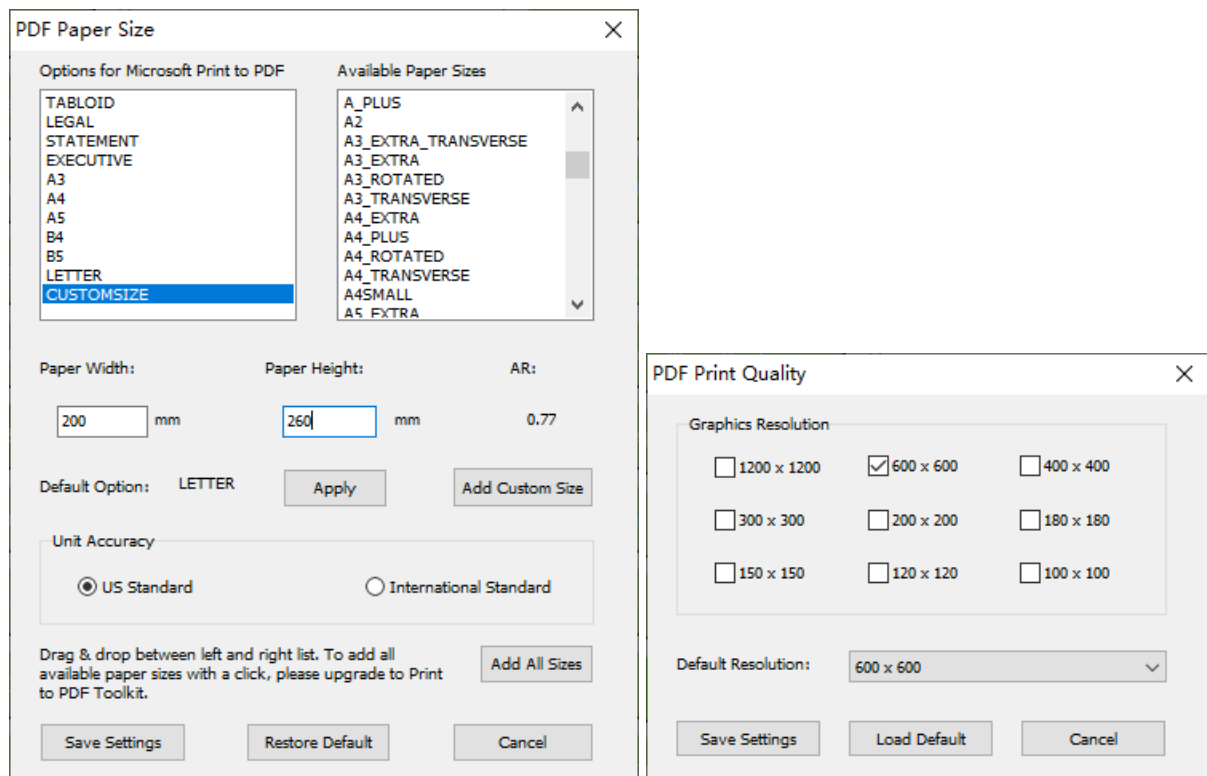


11.3 Diagnose Issues

Here is a check list for you to diagnose Microsoft Print to PDF issues,

1. Click 'Show Printer' button to see if Microsoft Print to PDF printer still exists in your printer list. If yes, go to Step 2. If no, click 'Install Printer' button to install it. When Microsoft Print to PDF printer is missing, the 'Reinstall Printer' button is replaced by 'Install Printer' button.
2. Click 'Printer Properties' button and 'PDF Options' button respectively to see if you can still have the correct printer properties dialog and PDF options. If yes, go to Step 3. If no, click 'Reinstall Printer' button to reinstall Microsoft Print to PDF printer and software package.
3. Click 'PDF Paper Size' button, and click 'Restore Defaults', and the paper types for Microsoft Print to PDF printer is restored to the default settings. Go to Step 4.





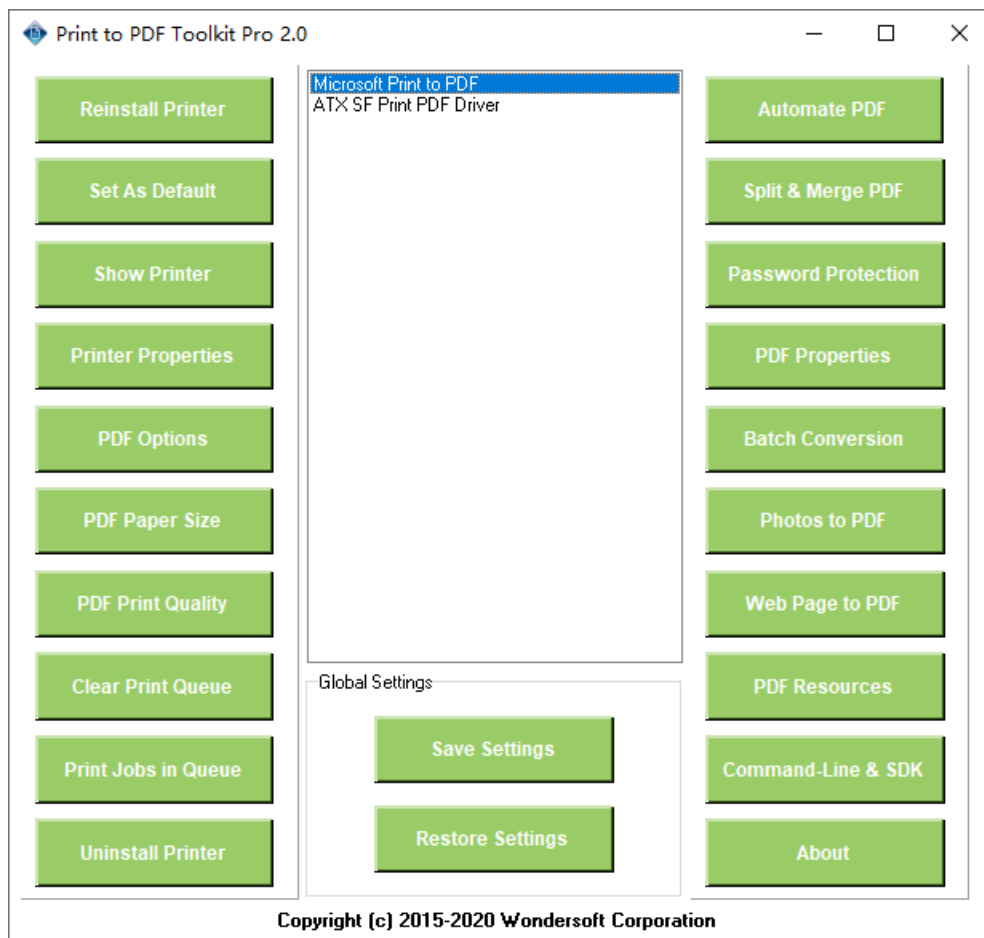
4. Click 'PDF Print Quality' button, and click 'Load Default' button to restore your PDF image resolution to the default value. Go to Step 5

5. Click 'Clear Print Queue' button, and wait for up to 40 seconds until the progress bar indicates that the cleaning is completed.

Now your Microsoft Print to PDF printer is back to normal.

11.4 Set As Default Printer

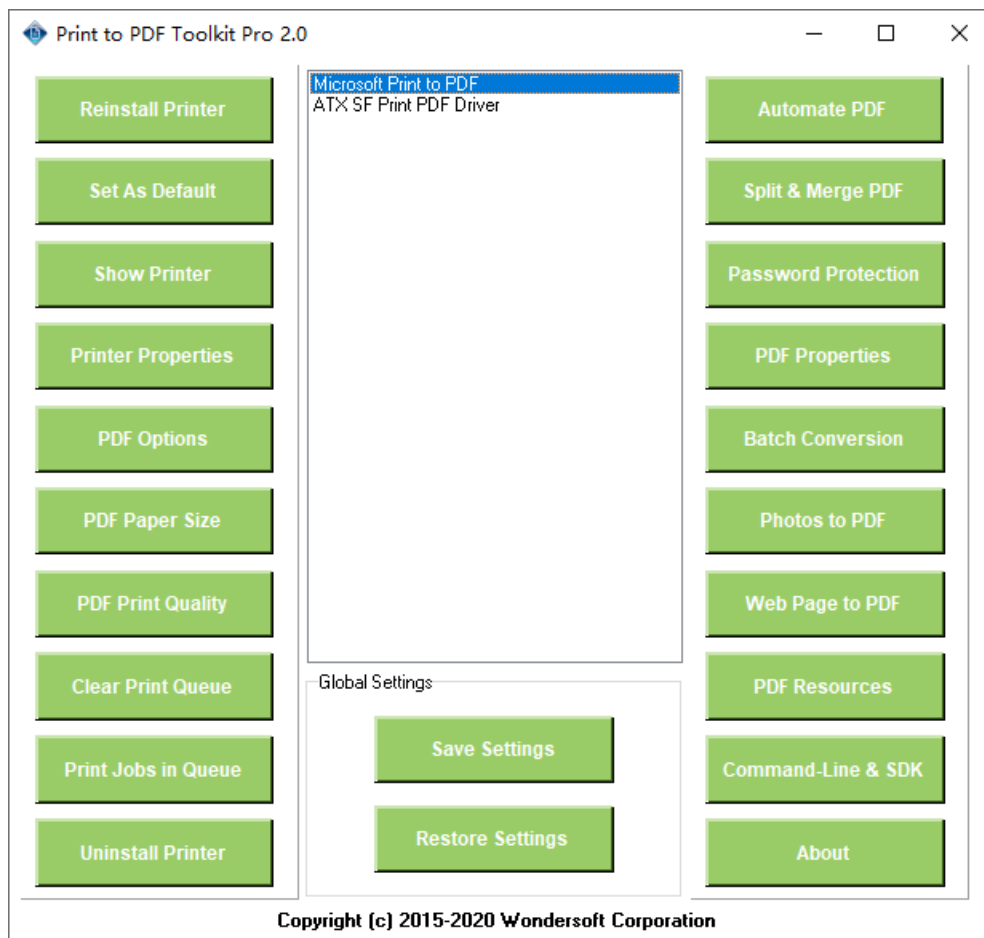
At any time you can set Microsoft Print to PDF printer as system default printer. Simply click 'Set As Default' button to get this done.



11.5 View Print Jobs

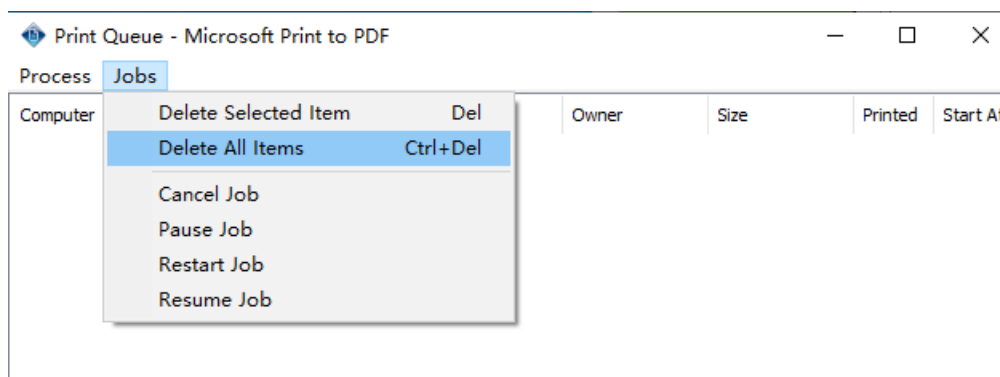
You might want to view print jobs in the print queue of Microsoft Print to PDF printer, and cancel a print job or stop all print jobs.

Click 'Print Jobs In Queue' button,



You are allowed to

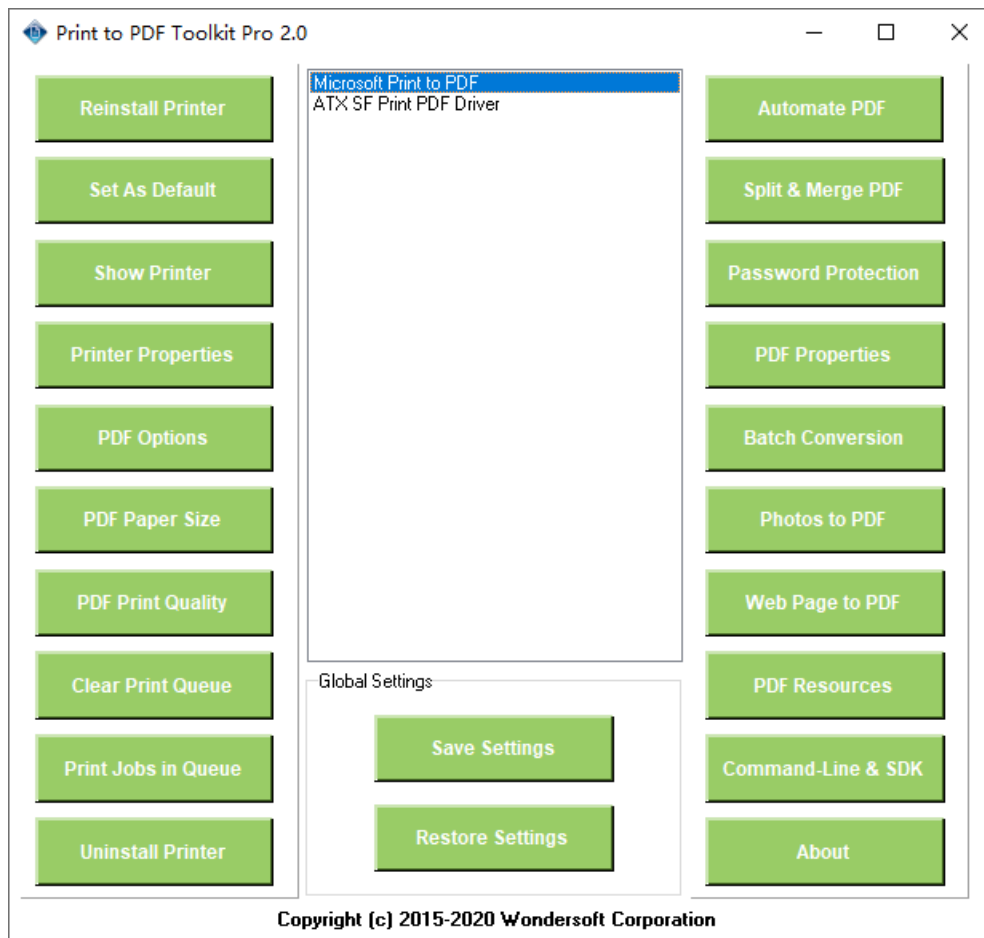
- Stop all print jobs by pressing Ctrl + Delete keys on your keyboard or clicking 'Delete All Items' in the menu.
- Delete selected print jobs
- Cancel a print job
- Pause a print job
- Restart a print job
- Resume a paused print job



11.6 Clear Print Queue

Windows Spooler Service is a native background service for printing support. If Microsoft Print to PDF printer does not work as expected, it is suggested to restart Windows Spooler Service and clear all print jobs in the print queue of Microsoft Print to PDF printer.

All you have to do is to click 'Clear Print Queue' button, and a progress indicator shows you cleaning is in progress. Please wait for a few seconds until the progress indicator disappears.



Top Level Intro

This page is printed before a new
top-level chapter starts

Part



XIII

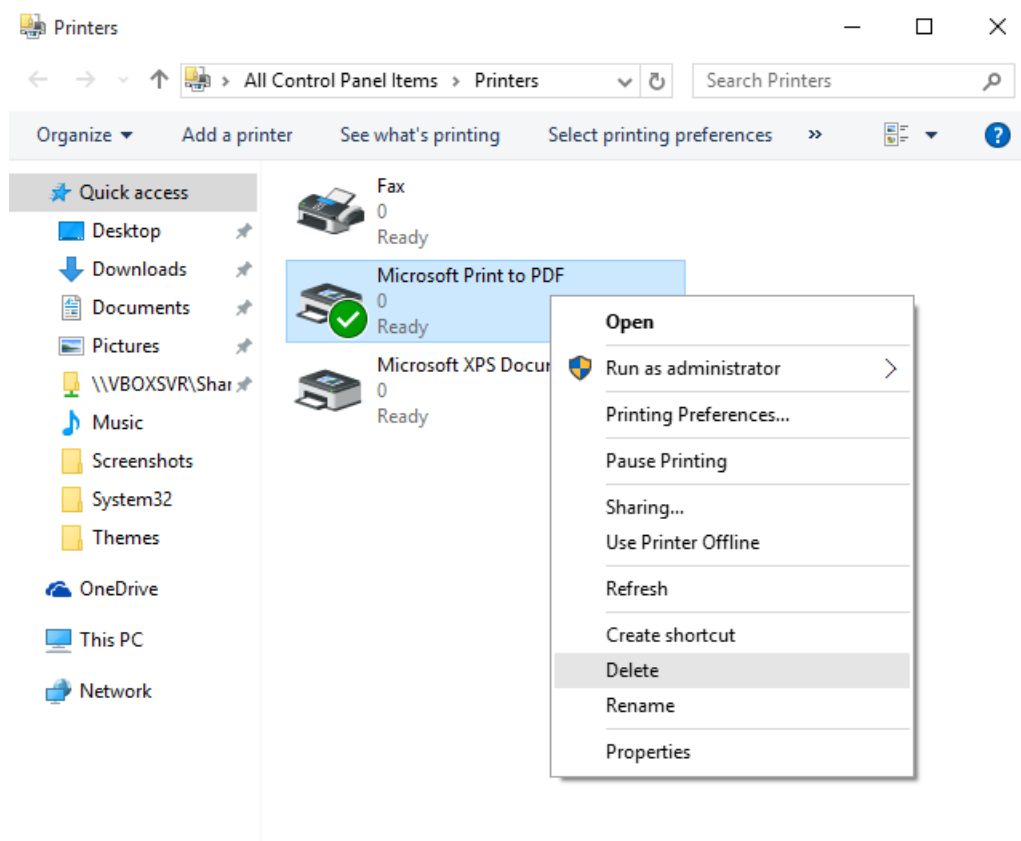
12 Shortcuts to Microsoft Print to PDF

Several shortcuts to Microsoft Print to PDF printer are available. The shortcuts integrated into Print to PDF Toolkit Pro software are,

- Show Printer List / Printer Folder
- Printer Properties
- PDF Options

12.1 Show Printer

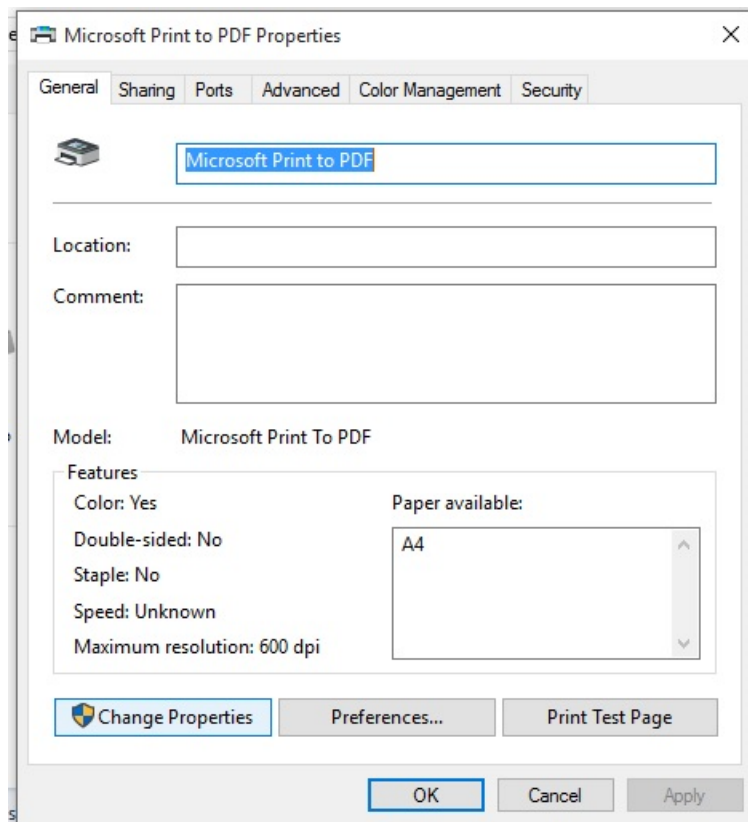
After you click 'Show Printer' button, you see all printers available in your printer list (also named printer folder). Now you do not have to go to Control Panel or Computer Settings followed by Printers and Faxes Devices.



12.2 Printer Properties

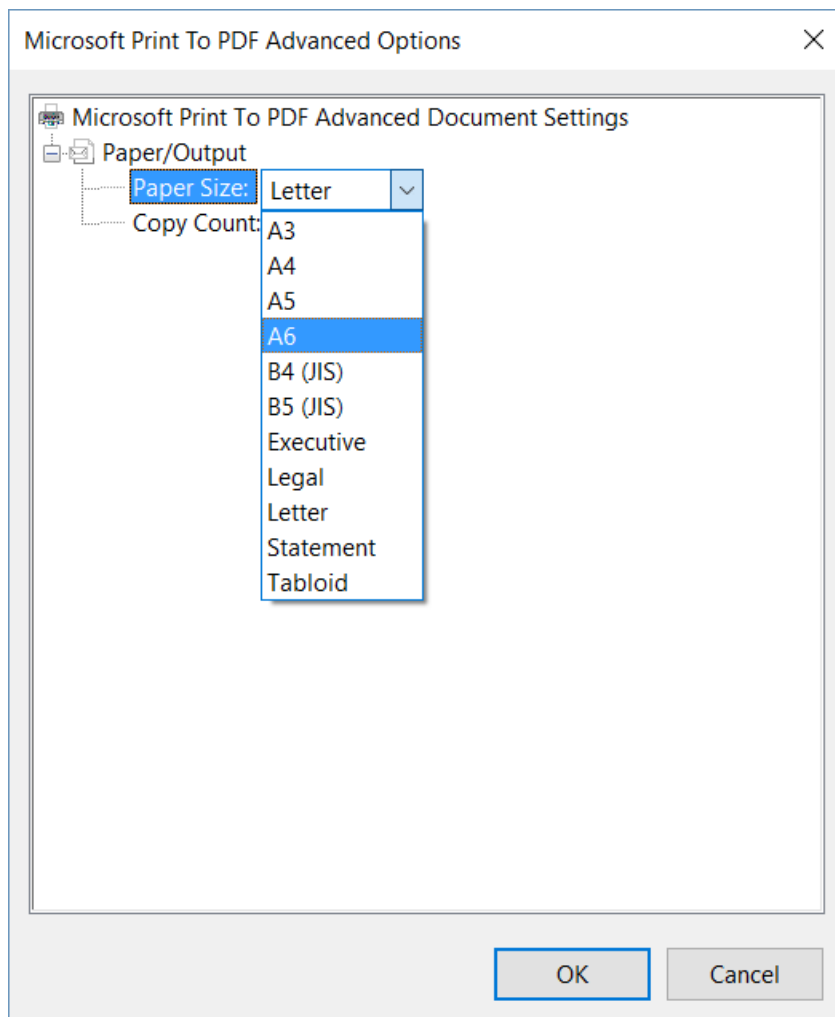
After you click 'Printer Properties' button, you see a dialog namely Microsoft Print to PDF printer properties. You can see printer features, such as color mode, double-sided printing support, staple support, speed, maximum resolution.

The paper available information shown in this dialog does not accurately reflect all the supported paper sizes. For more information, please click 'PDF Options' button or 'PDF Paper Size' button to get all the available paper sizes supported by Microsoft Print to PDF brought by Print to PDF Toolkit Pro software.



12.3 PDF Options

After you click 'PDF Options' button, you see a dialog namely Microsoft Print to PDF printer properties. You can change PDF options in the dialog box to address our needs. Copy Count is rarely used until you want to duplicate the contents of your PDF document multiple times. Available [paper size can be adjusted](#) with Microsoft Print to PDF Toolkit Pro.



Top Level Intro

This page is printed before a new
top-level chapter starts

Part

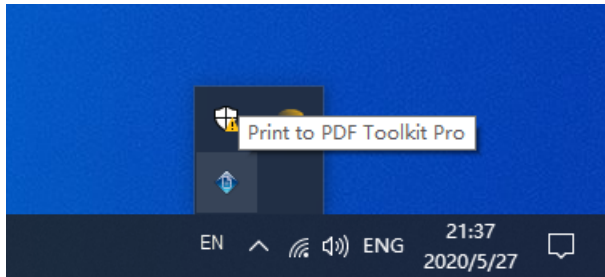


XIII

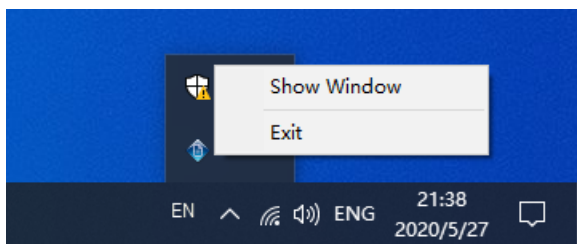
13 Minimize Print to PDF Toolkit Pro

The evaluation version of Print to PDF Toolkit Pro software does not allow you to minimize the main window of Print to PDF Toolkit Pro software to Windows system tray. Only the [registered version](#) of the software allows you to do so.

After you click the minimize button in the top-right corner of the main window, you would notice that Print to PDF Toolkit Pro software is minimized to Windows system tray as an icon.

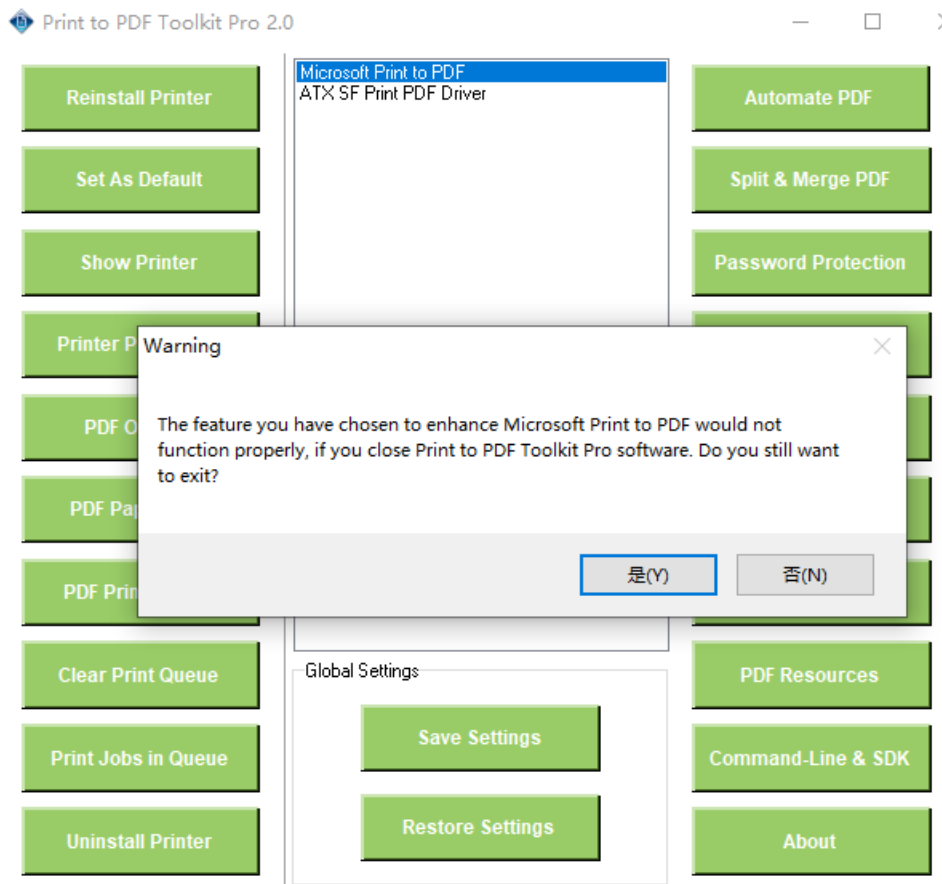


If you right-click the icon, you get the following menu,



Click 'Show Window' to restore the main window of Print to PDF Toolkit Pro software.

Click 'Exit' button to quit the software immediately. However, a warning message might appear alerting you that some of the features you have chosen (such as automatic save to folder feature) requires Print to PDF Toolkit Pro software to be active at all times. Therefore, you make the decision whether to close Print to PDF Toolkit Pro software or not.



Copyright (c) 2015-2020 Wondersoft Corporation

Top Level Intro

This page is printed before a new
top-level chapter starts

Part



14 PDF Resources

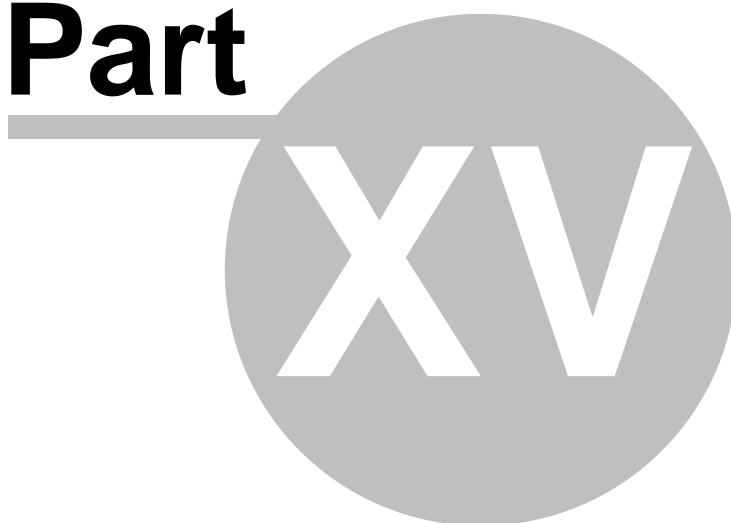
Many free and paid resources are available on the Internet.

After you click 'PDF Resources' button, you are redirected to a web page with many useful PDF resources for better work efficiency and fun.

Top Level Intro

This page is printed before a new
top-level chapter starts

Part



15 Command-Line Version and SDK

Wondersoft offers a command-line version of Print to PDF Toolkit Pro, and with this version you are allowed to empower Microsoft Print to PDF printer with automatic save, append, encryption, security, appearance, batch conversion, more paper sizes, print quality, repair, reinstall, uninstall features, and integrate the features into your own software application.

SDK is also available.

For more information, please visit [SDK](#) page for more information.

Top Level Intro

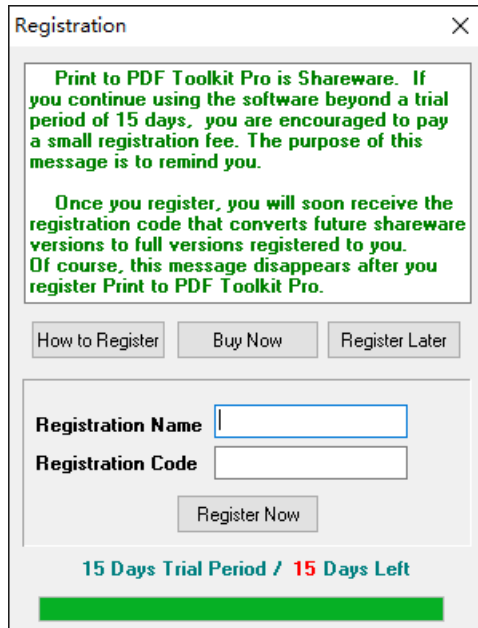
This page is printed before a new
top-level chapter starts

Part



16 Purchase

Enter topic text here.



16.1 License Type

Both personal license and business license are available. If you use Print to PDF Toolkit Pro software in a business or commercial environment, please purchase a business license.

To purchase a license, please follow the link,

<https://www.windows10pf.com/buypro.html>

16.2 How to purchase

Please click 'Buy Now' button to purchase a personal license. If you are looking for a business license, please click 'How to Register' button to learn more information.

Registration

Print to PDF Toolkit Pro is Shareware. If you continue using the software beyond a trial period of 15 days, you are encouraged to pay a small registration fee. The purpose of this message is to remind you.

Once you register, you will soon receive the registration code that converts future shareware versions to full versions registered to you. Of course, this message disappears after you register Print to PDF Toolkit Pro.

How to Register Buy Now Register Later

Registration Name

Registration Code

Register Now

15 Days Trial Period / 15 Days Left

16.3 How to register

Click 'How to Register' button, and you would be redirected to a web page showing you how to register Print to PDF Toolkit Pro software.

Registration

Print to PDF Toolkit Pro is Shareware. If you continue using the software beyond a trial period of 15 days, you are encouraged to pay a small registration fee. The purpose of this message is to remind you.

Once you register, you will soon receive the registration code that converts future shareware versions to full versions registered to you. Of course, this message disappears after you register Print to PDF Toolkit Pro.

How to Register Buy Now Register Later

Registration Name

Registration Code

Register Now

15 Days Trial Period / 15 Days Left

After you enter your registration name and registration code, please click 'Register Now' button to complete the registration.

Endnotes 2... (after index)

Back Cover